



# Science

## Plant and Animal Cells

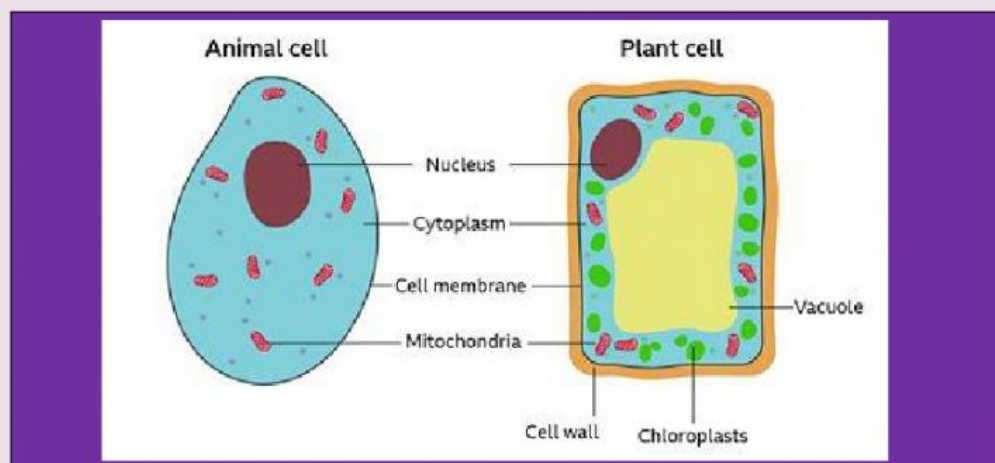
**Read and study the notes and diagram.**

The **cell** is the basic unit of structure and function of all living things. Cells work together to perform basic life processes that keep an organism alive for example movement, breathing, feeding, reproducing, excreting and growth.

All cells have similar parts. However, plants cells have a cell wall and chloroplasts which contain chlorophyll. These are not present in animal cells. The parts that are common to both plant and animal cells are nucleus, cell nucleus, cell membrane, cytoplasm, and vacuole.

The **nucleus** controls the activities of the cell. The **cell membrane** holds the parts of the cell together. It also separates the cell from its surrounding and controls what material enters and leaves the cell. **Cytoplasm** is a jellylike substance containing many chemicals to keep the cell functioning. The **vacuole** stores food, waste and water.

The **cell wall**, only found in plants, is a stiff outer layer that protects the cell and gives it shape. **Chloroplasts** contain chlorophyll that plants need to make food.



I have read the notes and studied the diagram and I will read them again later.

- (a) yes
- (b) no