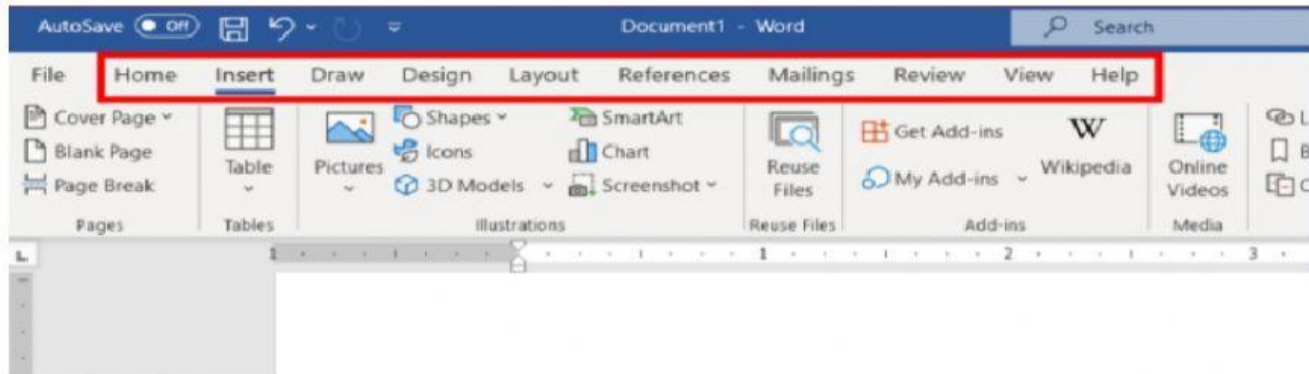


# Insert + Resize + Crop images



1. Which tab is used to add an image into the document?



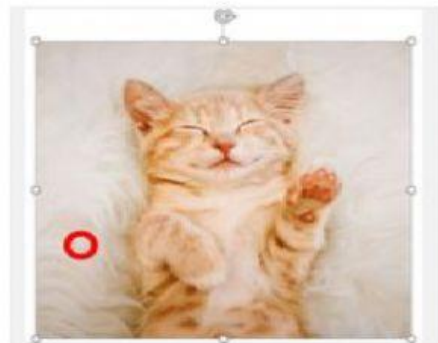
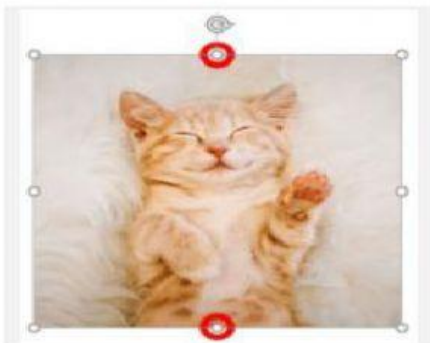
- ☐ Home tab
- ☐ Insert tab
- ☐ Draw tab
- ☐ Design tab

2. How to add an image into the document?



- ☐ Add --> Images
- ☐ Insert --> Pictures
- ☐ Insert --> Images
- ☐ Home --> Pictures

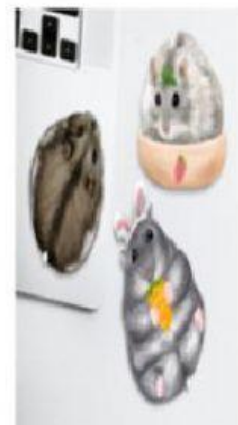
3. To resize an image correctly, we should click on \_\_\_\_\_.



4. Do we resize image #1 to image #2 correctly?



(Image #1)



(Image #2)



No.



Yes.

5. How to change from image #1 to image #2?



☐ Resize

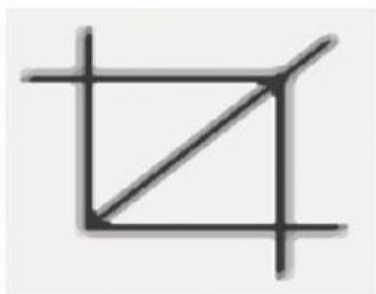
☐ Wrap Text

☐ Crop

☐ Bold

6. To remove the parts of an image, we use \_\_\_\_\_ tool.

☐



☐



☐

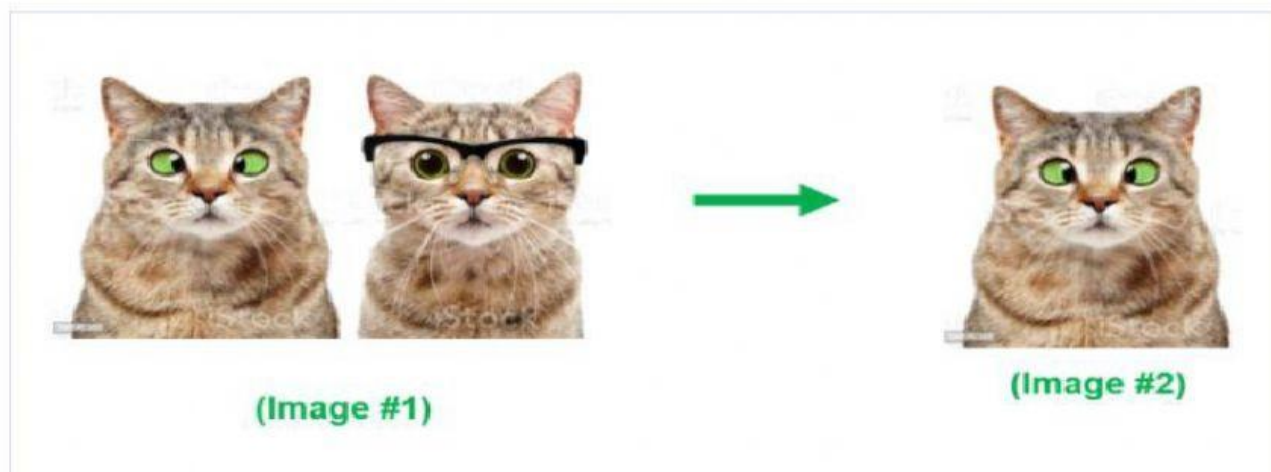


☐





7. How to change from **image #1** to **image #2**?



☐ Resize

☐ Wrap Text

☐ Crop

☐ Bold

8. How to change from **image #1** to **image #2**?



☐ Resize

☐ Wrap Text

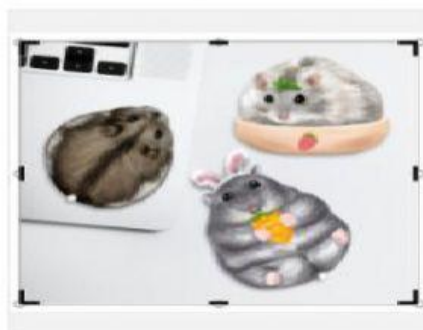
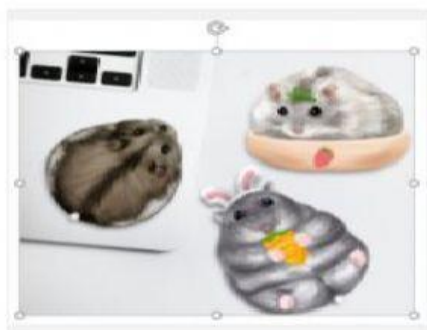
☐ Crop

☐ Bold

9. Which one is ready for you to **resize** this image?



10. Which one is ready for you to **crop** this image?



11. To **crop** an images means \_\_\_\_\_.



☐ to remove the parts that you do not want.

☐ to make the image bigger.

☐ to make the image smaller.

☐ to place the image behind the text.