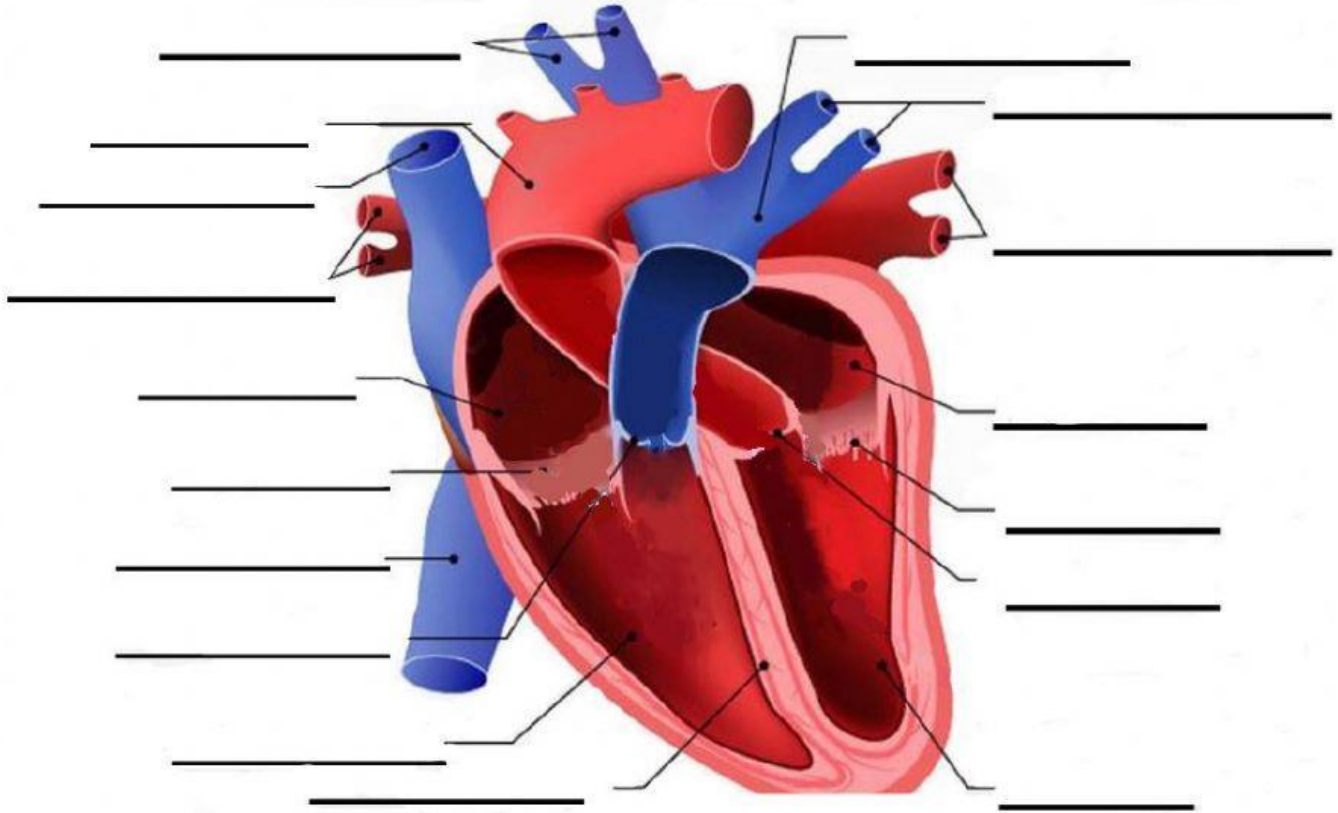


1. The Human Heart

1. Label the image of the heart. Drag the labels below and drop them in the correct place.



Aorta

Inferior vena cava

Right ventricle

Septum

Pulmonary artery

Left pulmonary veins

Aortic valve (Semi Lunar)

Left ventricle

Atrioventricular value (Bicuspid valve)

Right pulmonary arteries

Atrioventricular value (Tricuspid valve)

Pulmonary valve (semi lunar)

Superior vena cava

Right pulmonary veins

Left pulmonary arteries

Left atrium

Right atrium

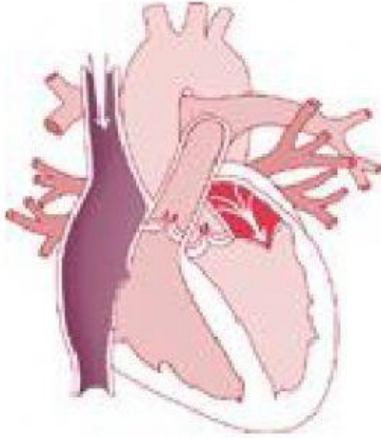
2. Trace a drop of blood from the body into and through the heart, back out to the body. Drag the labels to the correct order.

1.	Aorta
2.	Inferior vena cava
3.	Right ventricle
4.	Lungs
5.	Pulmonary artery
6.	Pulmonary veins
7.	Aortic valve
8.	Left ventricle
9.	Bicuspid valve
10.	Tricuspid valve
11.	Pulmonary valve
12.	Left atrium
13.	Right atrium

2. How the heart pumps blood

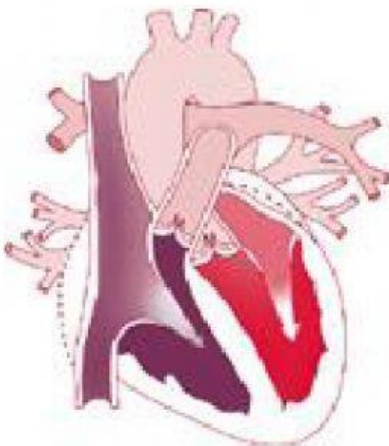
Describe what is happening at each stage of the heart cycle. Choose an option from the drop down box.

DIASTOLE



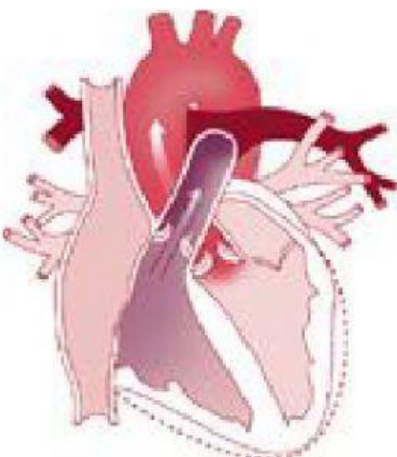
Valves	
Muscles	
Blood flow	

Atrial Systole



Valves	
Muscles	
Blood flow	

Ventricular Systole



Valves	
Muscles	
Blood flow	