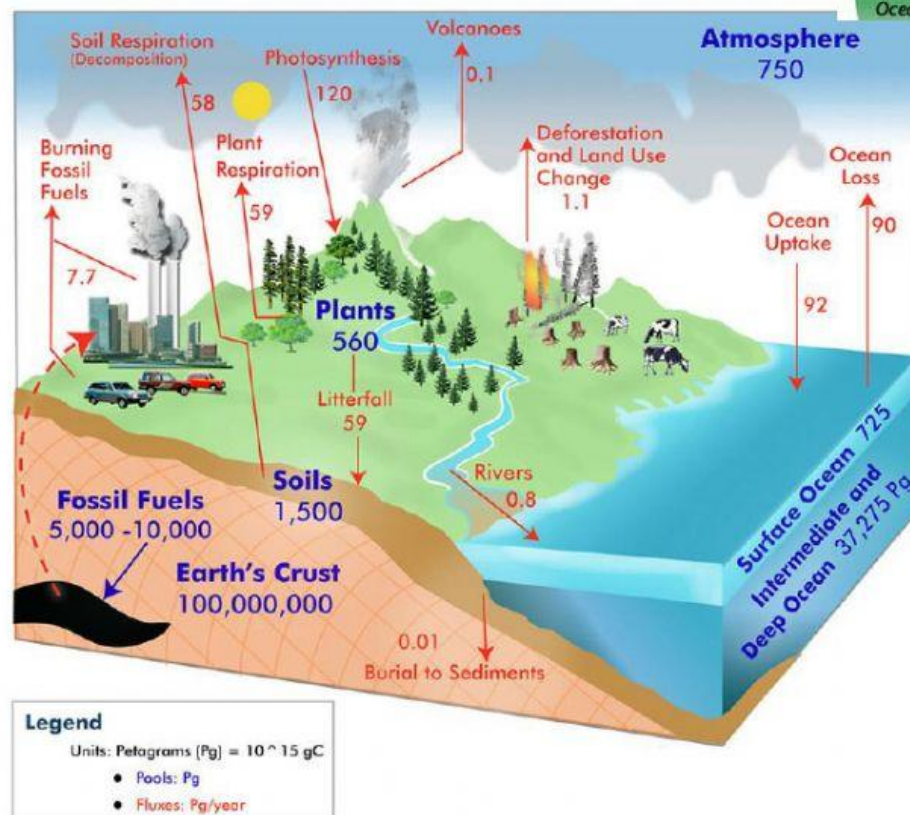


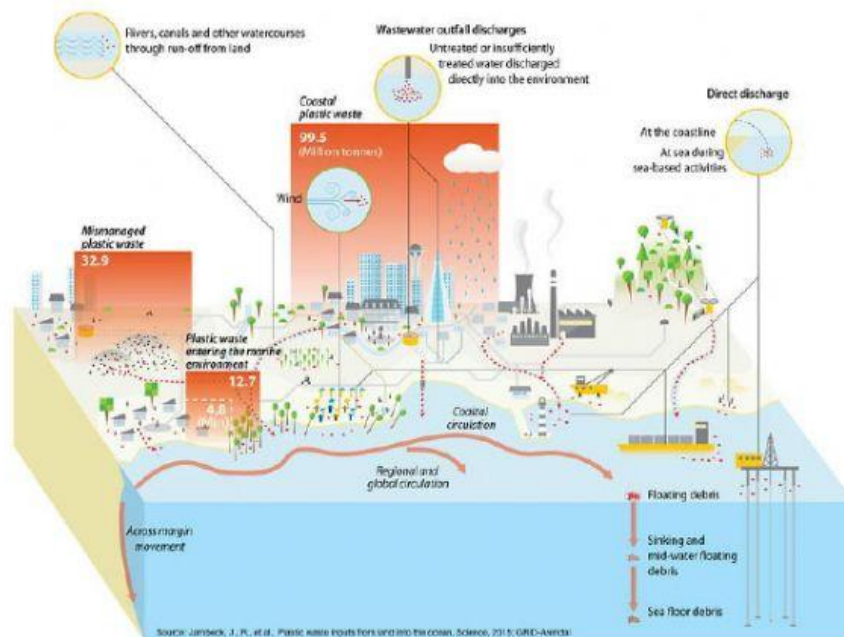
## 9.3 Ocean Zones

## Global Carbon Cycle

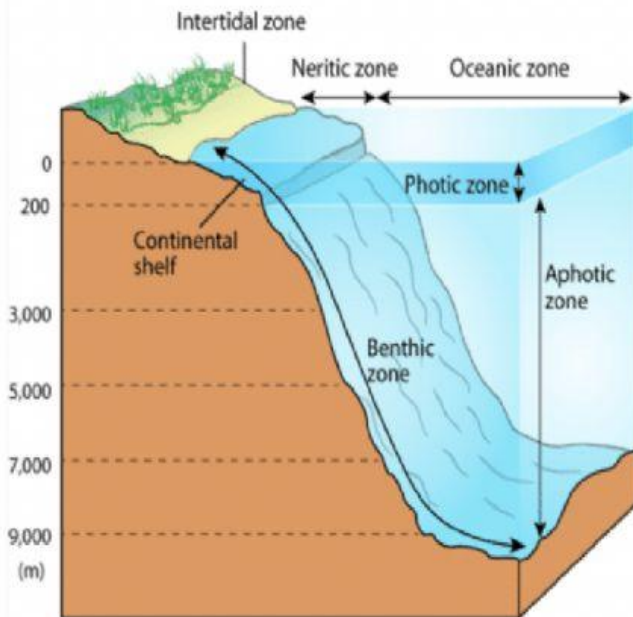


Copyright 2010 GLOBE Carbon Cycle Project, a collaborative project between the University of New Hampshire, Charles University and the GLOBE Program Office.  
Data Sources: Adapted from Houghton, R.A. Balancing the Global Carbon Budget. *Annu. Rev. Earth Planet. Sci.* 007:353-347, updated emissions values are from the Global Carbon Project. Carbon Budget 2009.

## Pathways and fluxes of plastics into the oceans



# Ocean Zones



## The intertidal zone

is closest to shore. At high tide it is covered with water. At low tide, it is exposed to air. Living things must adapt to changing conditions and moving water in this zone.

## The neritic zone

lies over the continental shelf. The water is not very deep. There are plenty of nutrients and sunlight. Many organisms live in this zone.

## The oceanic zone

is the open ocean out past the continental shelf. The water may be very deep. Nutrients may be scarce. Fewer organisms live in this zone.

## The photic zone

is the top 200 meters of water. This zone has enough sunlight for photosynthesis. That's why there are more living things here than in the aphotic zone.

## The aphotic zone

is water below 200 meters. There isn't enough sunlight here for photosynthesis. Living things must eat whatever drifts down from above or each other. That's why there are fewer living things here than near the surface.

## The benthic zone

is on the ocean floor. The ocean floor drops as you move away from the continents. There are fewer living things on the ocean floor where the water is very deep.

1. Where can 90% of the of the ocean's life be found?

2. Where is the twilight zone? What lives there?

3. Where is the dark zone? What lives there?

4. Why is little life found in the dark zone?

5. What is the abyss? Where is it found?

6. Why are trenches so deep?