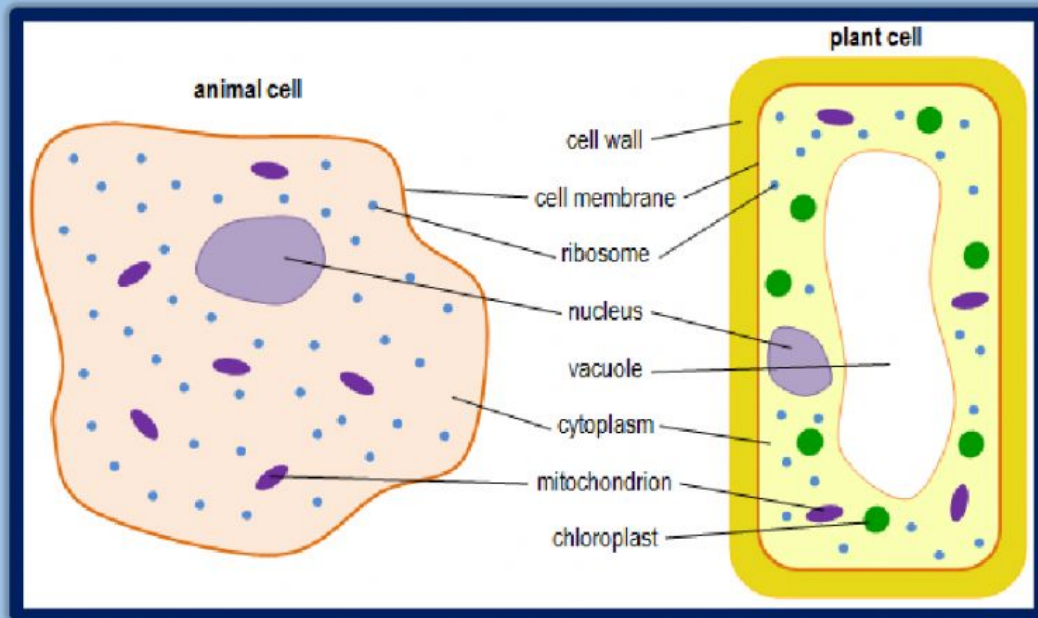


Name: _____ Date: _____

Animal and Plant Cells



The cell is the basic unit of structure and function of all living things. Cells work together to perform basic life processes that keep an organism alive (movement), breathing, feeding, reproducing, excreting, (growth). All cells have similar parts. However, plants cells have a cell wall and chloroplasts which contain chlorophyll. These are not present in animal cells. The parts that are common to both plant and animal cells are **nucleus, cell membrane, cytoplasm, mitochondrion, ribosome and vacuole**.

The nucleus controls the activities of the cell.

The cell membrane holds the parts of the cell together. It also separates the cell from its surrounding and controls what material enters and leaves the cell.

Cytoplasm is a jellylike substance containing many chemicals to keep the cell functioning.

The vacuole stores food, waste and water.

The cell wall, only found in plants, is a stiff outer layer that protects the cell and gives it shape.

Chloroplasts contain chlorophyll that plants need to make food.