

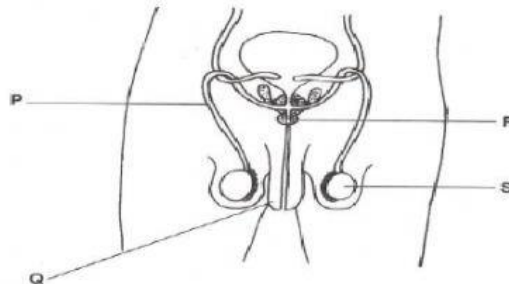
## TOPIC 16.1 MALE AND FEMALE REPRODUCTIVE SYSTEM

Choose the correct answers from the options available.

1. Which of the following makes up the male reproductive system?

- A. Oviduct, ovary, uterus, urethra.
- B. Ovary, penis, sperm duct, urethra.
- C. Penis, sperm duct, testis, urethra.
- D. Penis, sperm duct, testis, uterus.

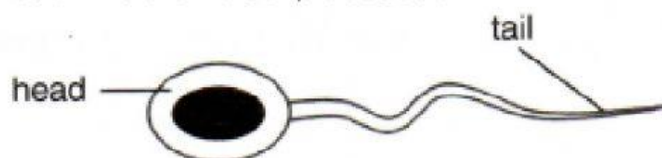
2. Figure below shows parts of the male sexual organ labeled **P**, **Q**, **R** and **S**. Which structures are the testis, sperm duct and penis?



	Sperm duct	Penis	Testis
A.	P	Q	R
B.	P	Q	S
C.	S	P	R
D.	S	P	Q

3. Figure below shows a sex cell. Where is this cell produced?

- A. Penis.
- B. Scrotum.
- C. Testis.
- D. Urethra.



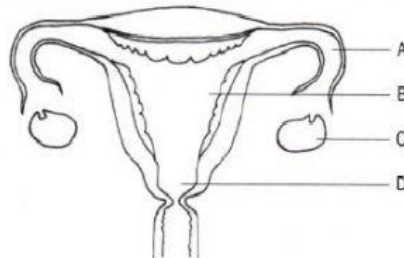
4. Figure below shows a human egg cell and sperm cell.



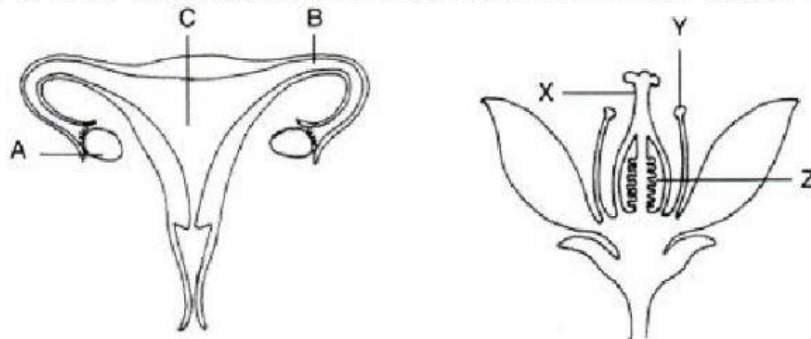
What are the features of a human egg cell, when compared to the sperm cell?

	Size of egg cell	Number of egg cell produced
A.	Larger than sperm cell	More than that of sperm cell
B.	Larger than sperm cell	Less than that of sperm cell
C.	Smaller than sperm cell	More than that of sperm cell
D.	Smaller than sperm cell	Less than that of sperm cell

5. At which point will the sperm fuses with the egg to form a fertilized cell?



6. Figure below shows the reproductive system of a human and a plant. Which of the following parts of plant and human reproductive system stores the female sex cells?



- A. A and Y.  
B. A and Z.  
C. C and Y.  
D. B and Y.