

NAME: \_\_\_\_\_ DATE: \_\_\_\_\_

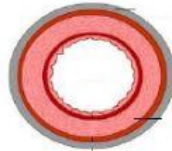
### BLOOD VESSELS

1. Drag the name of the blood vessel to the appropriate diagram. The vessels are not drawn to scale.

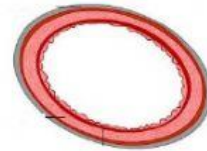
**ARTERY**



**CAPILLARY**



**VEIN**



2. Complete the following sentences.

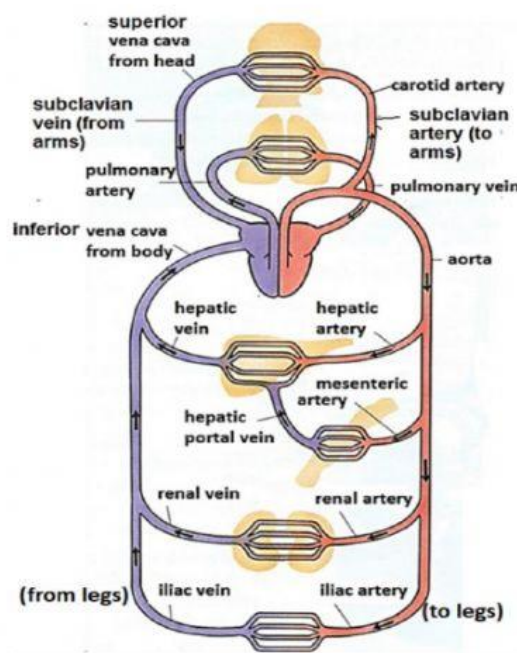
- a. ALL arteries carry blood A \_\_\_\_\_ F \_\_\_\_\_ the heart.  
 b. ALL veins carry blood T \_\_\_\_\_ the heart.  
 c. Arteries transport O \_\_\_\_\_ blood except for the P \_\_\_\_\_ artery.  
 d. Veins transport D \_\_\_\_\_ blood except for the P \_\_\_\_\_ vein.

3. Watch the following video on Blood Vessels and complete the summary table below by dragging the terms to the correct box. <https://www.youtube.com/watch?v=MFydNeGomec>

NARROW	MIXED	NO	HIGH→LOW	TO HEART	OXYGENATED	ONE CELL THICK
VERY HIGH	DEOXYGENATED	LINK ARTERY to VEIN	YES	TAKE BLOOD FROM HEART	TAKE BLOOD TO HEART	VERY NARROW
THIN	ARTERIES→VEINS	WIDE	VERY THICK	LOW	FROM HEART	NO

PROPERTY	ARTERY	CAPILLARY	VEIN
Function of Vessel			
Structure of Wall			
Width of Lumen			
Pressure			
Blood direction			
Type of Blood			
Are Valves present?		NO	

4. Each organ has specially names arteries and veins which connect them to the circulatory system. Complete the table below by finding the names of the blood vessels. Use the diagram below to assist. **Just write the name (not artery or vein beside it)**



REGION OF BODY	ARTERY AND VEIN
From heart to body	
From body to heart	
From head	
To head	
Arms	Subclavian
Lungs	
Liver	
From gut to liver	
Gut	Mesenteric artery but no vein (see hepatic portal vein)
Kidneys	
Legs and feet	

5. THINK!! Why is the pulmonary artery called an artery if it carries deoxygenated blood?

---

6. THINK!! Why is the pulmonary vein called a vein if it carries oxygenated blood?

---