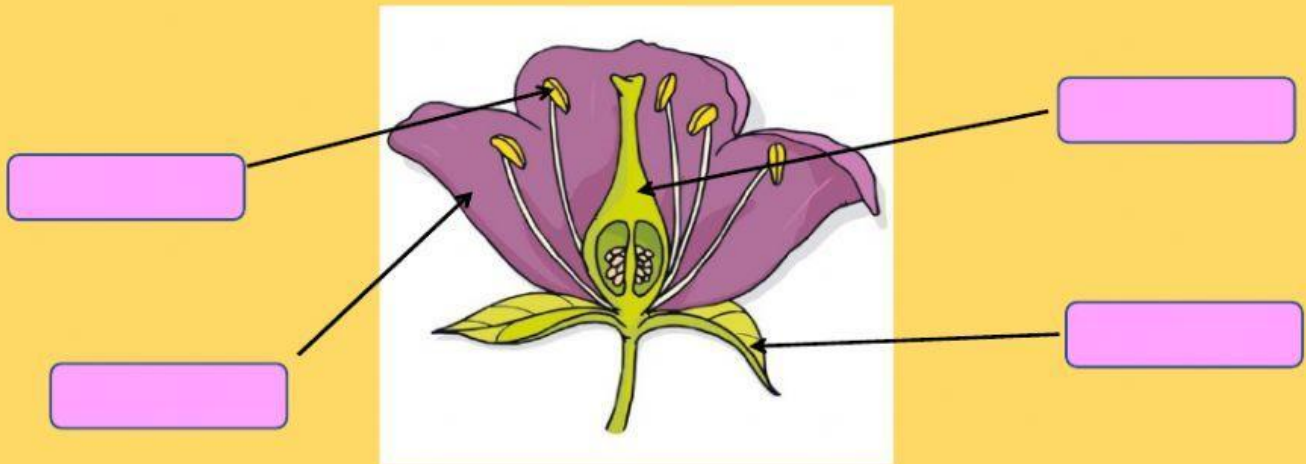


# Label the flower BY MERCHE

Write it down on the rectangle



## Choose the correct answer

BY MERCHE

Click on the correct rectangle

MOSSES AND FERNS ARE

FLOWERING  
PLANTS

NON FLOWERING  
PLANTS

MOSSES ARE

SHORT AND  
SOFT

TALL AND  
HARD

MOSSES AND FERNS

DON'T HAVE  
FLOWERS

HAVE  
FLOWERS

MOSSES AND FERNS REPRODUCE BY

SEEDS

SPORES

FERNS LIVE IN

SHADY  
PLACES

SUNNY  
PLACES

FERNS ARE

SMALL AND  
GREEN

TALL AND  
WHITE