

REPRODUCTION IN HUMAN

1. Figure 1 shows type of cell made by the male reproductive organ.



Figure 1

What organ produces the cell shown above?

- A. Penis C. Testes
B. Sperm duct D. Urethra

2. Figure 2 shows the male reproductive organs.

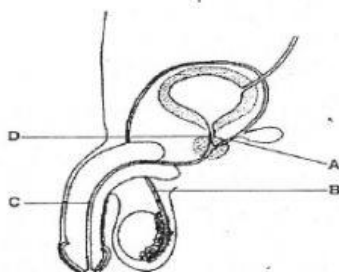
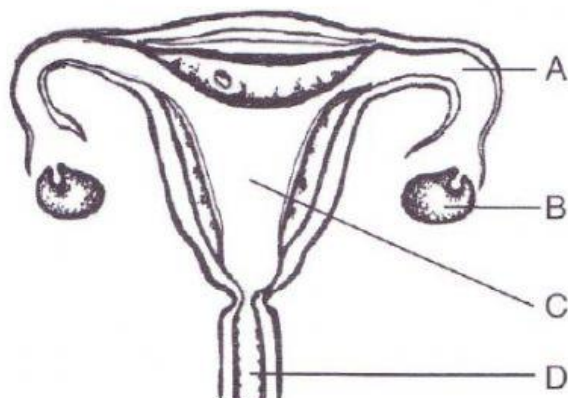


Figure 2

Which structure **A, B, C or D** allows both urine and sperm to pass through?

3. Figure 3 shows the female reproductive system. Where does fertilisation occur?



4. Figure 4 shows parts of the male sexual organ labelled P, Q, R and S. Which structures are the testis, sperm duct and penis?

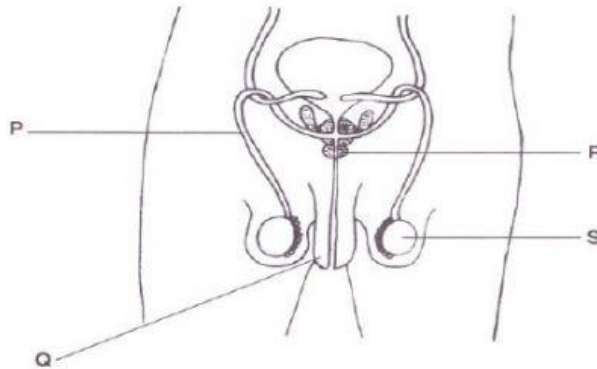


Figure 4

	Sperm duct	Penis	Testis
A.	P	Q	R
B.	P	Q	S
C.	S	P	R
D.	S	P	Q

☐

5. Figure 5 shows a sex cell.

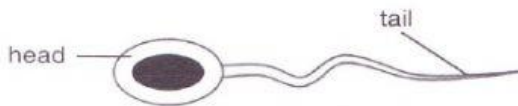


Figure 5

Where is this cell produced?

- A. Penis C. Testis
B. Scrotum D. Urethra

☐

6. The testis is a male sex organ which
 A. produces sperms and male sex hormones.
 B. stores sperms.
 C. transports sperms to the urethra.
 D. provides nutrients for sperms.

☐

7. The testes are kept in the scrotum outside the body because

- A. the temperature outside the body is the most suitable for the production and storage of sperms.
- B. there is no space to keep inside the body.
- C. it is easier to differentiate the male from the female.
- D. the temperature in the body is too low for the sperms to survive.

☐

8. Figure 6 below shows part of the male reproductive system. Which labelled part marked A, B, C or D produces sperm cells?

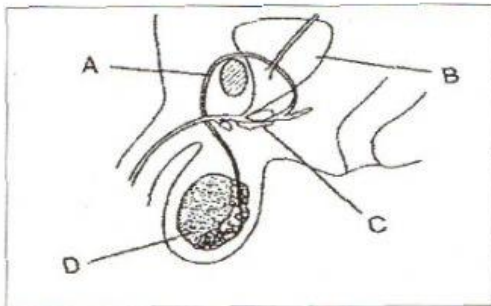


Figure 6

☐

9. Which of the following make up the female reproductive system?

- A. Ovary, oviduct, urethra and vagina.
- B. Ovary, scrotum, cervix and vagina.
- C. Oviduct, cervix, vagina and ovary.
- D. Testis, ovary, oviduct and cervix.

☐

10. A female sex cell is known as

- A. an ovum
- B. an embryo
- C. an ovary
- D. a zygote

☐