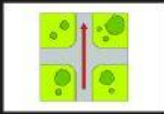




GIVING DIRECTIONS

Click on the icon, listen and choose the correct expression



turn left
go straight
stop



stop
go over the bridge
cross the road



go through the tunnel
turn left
cross the road



go over the bridge
turn right
turn left



turn right
cross the road
go through the tunnel



go round the roundabout
go through the tunnel
go straight



turn right
go through the tunnel
stop



go straight
stop
cross the road



stop
cross the road
go straight