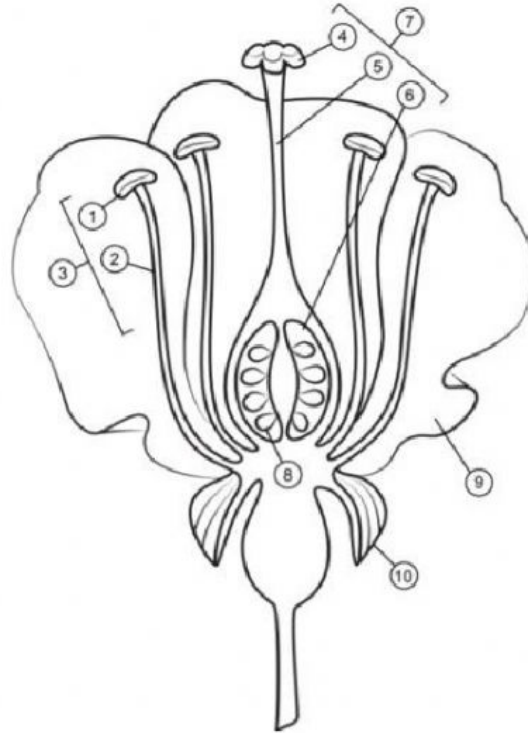


Can you name the parts of this flower?

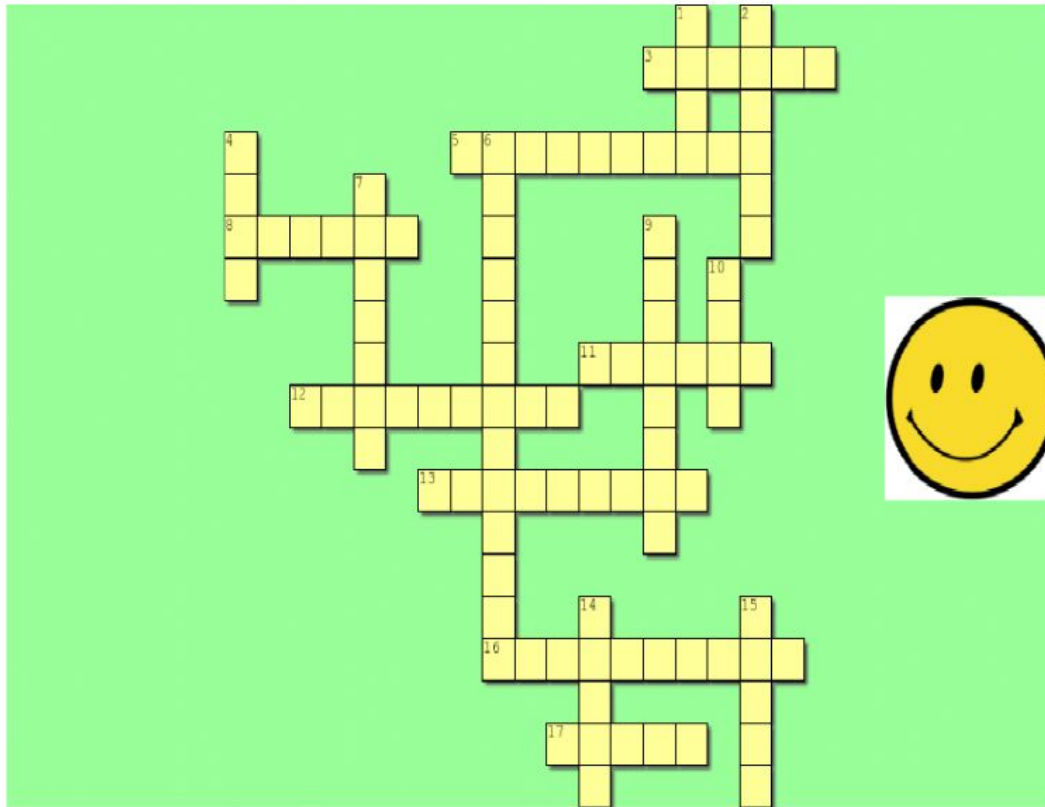
Drag the words in the box to the corresponding numbers

Pistil	Anther	Style	Filament	Ovule
Sepal	Stamen	Stigma	Ovary	Petal

1	
2	
3	
4	
5	
6	
7	
8	
9	
10	



Puzzle time!



Created using the Crossword Maker on TheTeachersCorner.net

tree stamen angiosperm ferns under capsules evergreen spores perfect grass pistil non-flowering pine gymnosperm deciduous mosses bush

Across

3. What is the name of the female reproductive organ in plants?
5. This type of plants produce flowers and fruit.
8. Non flowering plants reproduce with _____.
11. This type of non-flowering plants do not have true roots, stems and leaves.
12. Trees that lose their leaves are called _____ trees.
13. Trees that are always green are called _____ trees.
16. This type of plants have seeds that develop inside cones.
17. A non-flowering plant with true stems, leaves and roots.

Down

1. The _____ tree is an example of a gymnosperm.
2. What is the name of the male reproductive organ in plants?
4. The stem of this plant is flexible.
6. _____ plants do not reproduce with seeds.
7. _____ flowers have both the male and female parts.
9. The spores of mosses grow inside _____.
10. The stem of this plant is very hard, called trunk.
14. Ferns have spores _____ their leaves.
15. The stem of this plant is very soft.

