

Capacity



capacity = volume
capacity is how much liquid an object holds

Mass is measured using a measuring jug

We use

- MILLILITERS ml
- LITRES L

1000 ml = 1 Litre

To convert mls to L - divide by 1000

To convert L to mls - multiply by 1000

eyedropper 1 ml



a glass of water

250 mls



a can of coke

375 mls



a bottle of milk

1L



1 bucket of water

15L



Mark the correct answer with a X

What is the best estimate for the capacity of a soft drink bottle cap?

120 L 20 L 20 ml 120 ml

What is the best estimate for the capacity of a bath?

200 L 20L 200 ml 20 ml

What is the best estimate for the capacity of a coffee mug?

300 L 30L 30 ml 300 ml

What is the best estimate for the capacity of a saucepan?

100 L 10 L 10 ml 100 ml

What is the best estimate for the capacity of medicine cup?

10 L 1L 1 ml 10 ml

What is the most appropriate unit to measure the water in a fish tank?

M KG L M³

What is the most appropriate unit to measure a child's water bottle in?

ml

g

cm

cm²

What is the most appropriate unit to measure the area of paper in?

cm

mg

ml

cm²

What mass is shown on the scales in **grams and kilograms**



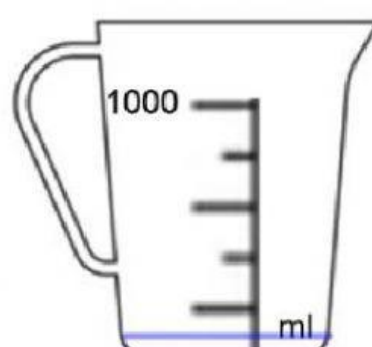
ml

L



ml

L



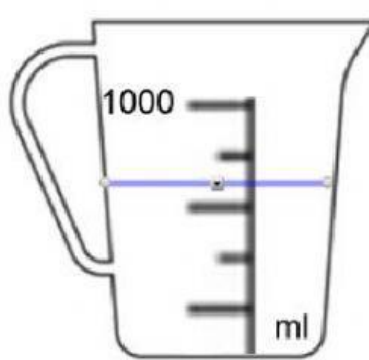
ml

L



ml

L



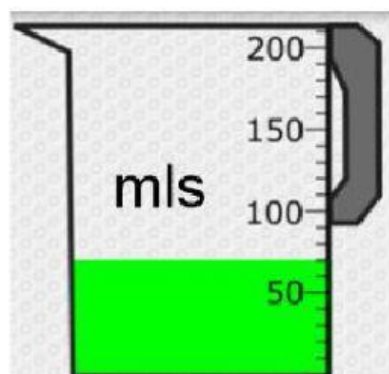
ml

L



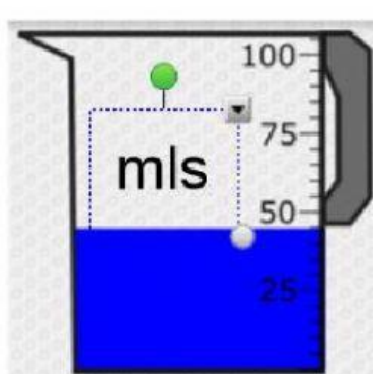
ml

L



ml

L



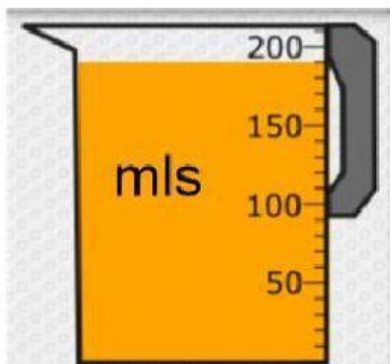
ml

L

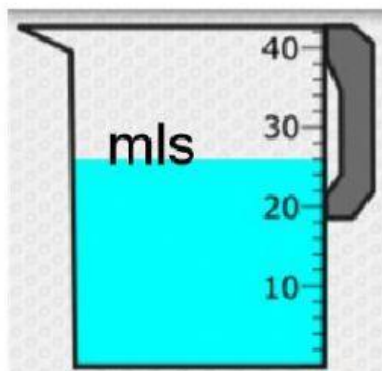


ml

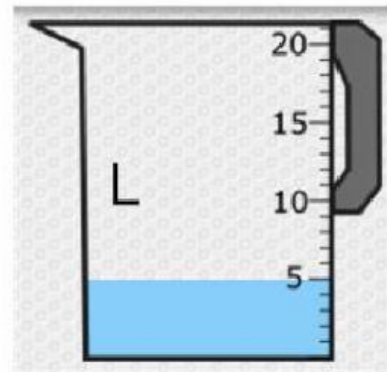
L



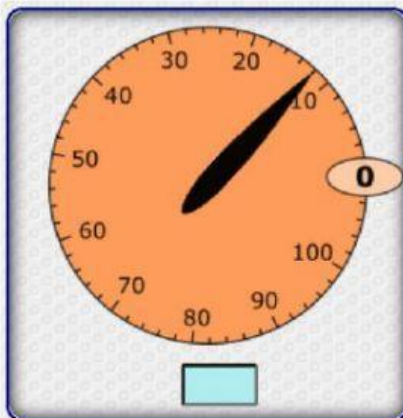
ml L



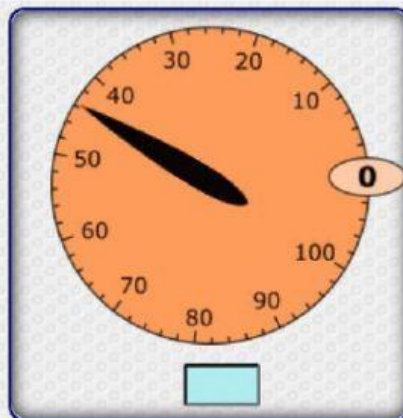
ml L



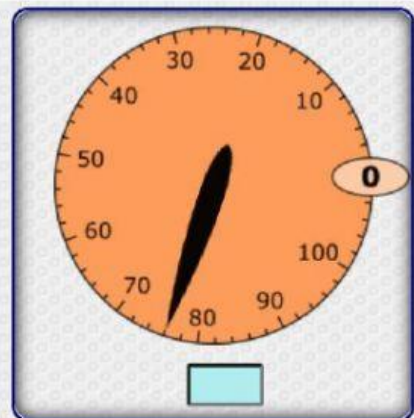
ml L



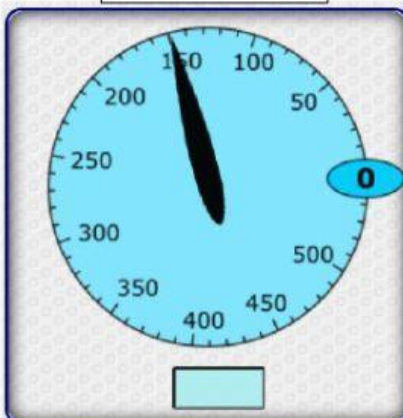
g



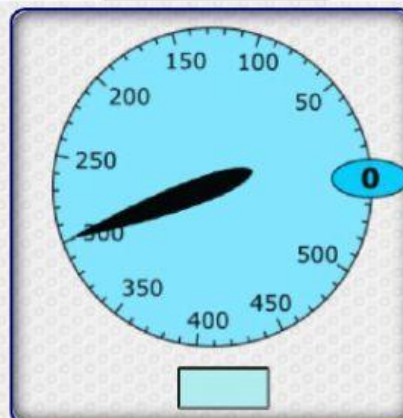
g



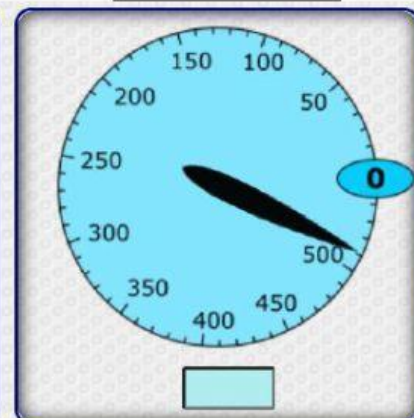
g



g



g



g