

Watch the SECOND PART of the video and complete the following activity.

Activity 2: Listen to people talking about their homes. Match the person with the corresponding description.

I live in a flat in New York. It's on the 7th floor. It's not very big but it's nice.

I live in a small house. On the ground floor it's got a kitchen and a living room and a small toilet. On the 1st floor it's got two bedrooms and a big bathroom.

Watch the FIRST PART of the video and complete the following activity.

Activity 1: Complete the sentences with the correct preposition of place (ON – IN – UNDER – NEXT TO – IN FRONT OF – BETWEEN – ABOVE – BEHIND)

- A. There is a plant the door.
- B. There are stairs the lamp.
- C. There are books the shelf.
- D. There's a carpet..... the floor.
- E. There's a woman the sofa.
- F. There's a shelf the armchair.
- G. There's a fridge the microwave.
- H. There's a cupboard the sink.
- I. There's a bath the washbasin and the shower.
- J. There's a mirror the washbasin.



WINTERFELL ENGLISH HOUSE
TEACHER JESICA TORRES

Watch the THIRD PART of the video and complete the following activity.

Activity 3: Listen to the conversation and decide if the following statements are TRUE or FALSE. Correct the false ones.

- A. There's a small garage for 1 car in the house. ☐
- B. There are 2 bathrooms in the house. ☐
- C. There isn't any microwave in the kitchen. ☐
- D. There are three rooms on the ground floor. ☐
- E. The rooms on the ground floor are: a kitchen, ☐ a living room and a bedroom.



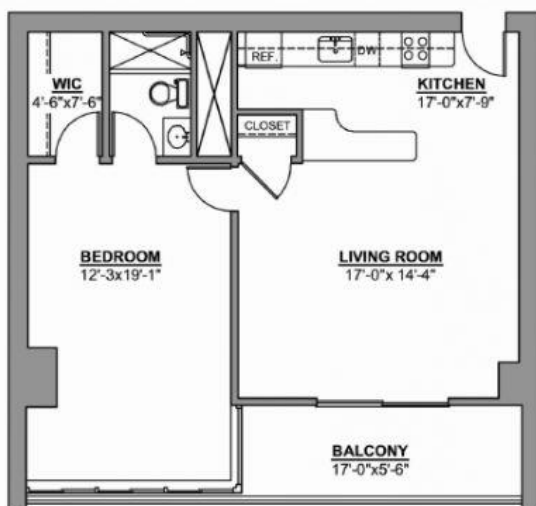
Watch the FOURTH PART of the video and complete the following activity.

Activity 4: Listen to the conversation and TICK on the pieces of furniture mentioned in each room.

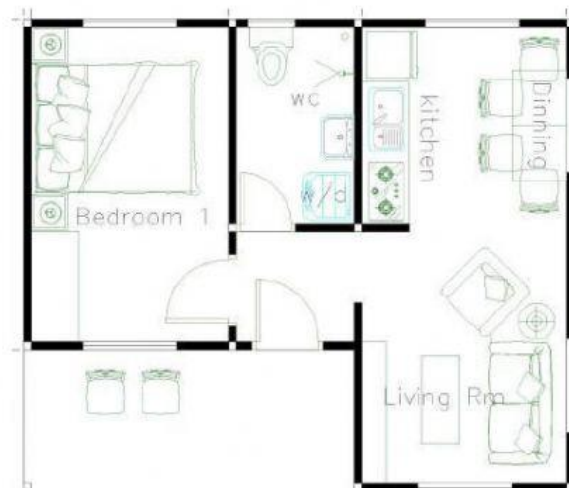
HALL	BEDROOM	LIVING ROOM	BALCONY	STUDY	BATHROOM	KITCHEN
PLANT	CHAIR	TV	CARPET	VASE	MIRROR	MICROWAVE
STAIRS	WARDROBE	TABLE	TABLE	PLANTS	SHOWER	COOKER
CARPET	CLOSET	ARMCHAIR	CHAIRS	PICTURES	BATHTUB	WINDOW
LAMP	BED	CARPET	PLANTS	DESK	TOILET	CHAIRS

Activity 5: Choose on the pictures and describe it. Use THERE'S -THERE ARE – THERE ISN'T – THERE AREN'T.

OPTION 1



OPTION 2



I choose

WINTERFELL ENGLISH HOUSE
TEACHER JESICA TORRES