

Sleepless in Seattle

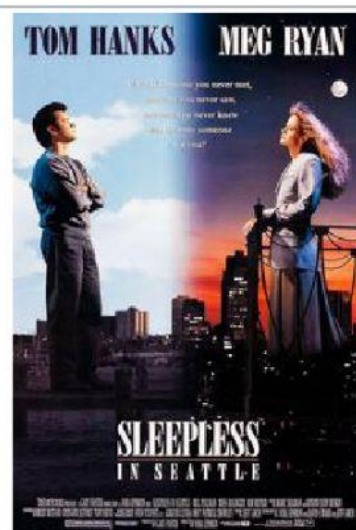
After Chicago architect Sam Baldwin loses his wife Maggie to cancer, he and his eight-year-old son Jonah start a new life in Seattle, but they continue to grieve. A year and a half later on Christmas Eve, Jonah calls in to a radio talk show, and persuades a reluctant Sam to go on the air to talk about how much he misses Maggie.

Thousands of women from around the country who hear the program and are touched by the story write to Sam. One of the listeners is Annie Reed, a *Baltimore Sun* reporter who is engaged to Walter but feels there is something missing from their relationship. After watching the film *An Affair to Remember*, Annie writes a letter suggesting that Sam meet her on top of the Empire State Building on Valentine's Day. She decides not to mail it, but her friend and editor Becky does it for her and later agrees to send Annie to Seattle.

Sam begins dating a co-worker, Victoria, whom Jonah dislikes. Jonah reads Annie's letter and likes that it mentions the Baltimore Orioles, but he fails to convince his father to go to New York to meet Annie. On the advice of his playmate Jessica, Jonah replies to Annie, agreeing to the New York meeting.

While dropping Victoria off at the airport for a flight, Sam sees Annie exiting from her plane and is mesmerized by her, although he has no idea who she is. Annie later secretly watches Sam and Jonah playing on the beach together. The next day she goes again to Sam's houseboat but when she sees Suzy with him, she mistakenly assumes Suzy is his girlfriend. Sam recognizes Annie from the airport and says "hello" but Annie only responds with "hello" before leaving. She returns to Baltimore and then goes to New York to meet Walter for Valentine's Day.

With Jessica's help, Jonah flies to New York and goes to the Empire State Building to find Annie. When Sam discovers this, he grabs a later flight, following Jonah, whom he finds on the observation deck. Meanwhile, Annie sees the skyscraper from the Rainbow Room where she is dining with Walter and confesses her doubts to him, amicably ending their engagement. She rushes to the Empire State Building and arrives on the observation deck just moments after the doors to the down elevator close with Sam and Jonah inside. The observation deck is empty, but Annie discovers the backpack Jonah left behind. As she pulls out Jonah's teddy bear from the backpack, Sam and Jonah emerge from the elevator to retrieve it, and the three meet. After Sam and Annie stare at each other in recognition, Sam prepares to leave and offers his hand to Annie. The three then enter the elevator together and the doors close, with Jonah smiling.



Number the events. Write the corresponding number in the boxes.

- ☐ Annie goes to Sam's boathouse.
- ☐ Sam speaks on the radio.
- ☐ Annie breaks up with Walter.
- ☐ Jonah takes a plane to New York.
- ☐ Sam becomes a widower.
- ☐ Sam and Jonah go back to the observation deck to get Jonah's backpack.
- ☐ Jonah replies Annie's letter and agrees to meet her in New York.
- ☐ Sam flies to New York.
- ☐ Annie is dissatisfied with her relationship with Walter.
- ☐ Annie fails to meet Sam and Jonah.
- ☐ Sam sees Annie at the airport.
- ☐ Sam, Jonah and Annie meet and take the elevator together.
- ☐ Sam and Jonah settle down in Seattle.
- ☐ Thinking that Sam has a girlfriend, Annie goes back to New York.
- ☐ Annie writes a letter to Sam but does not mail it.
- ☐ Jonah goes to the Empire State Building.
- ☐ Becky mails Annie's letter and sends Annie to Seattle.
- ☐ Sam finds Jonah on the observation deck.