

Maths 4A-Homework pages 5,7-Week 1

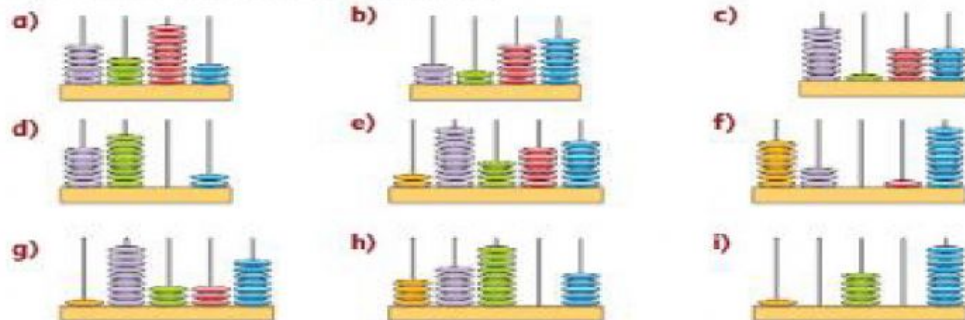
Name: _____ Class: _____

2 Copy the sentences, replacing the number words with numerals.

- a) Approximately **two thousand two hundred** people visited the museum on its opening day.
- b) The population of Inverness is approximately **fifty-one thousand** people.
- c) The coastline of Egypt is approximately **two thousand four hundred and fifty** kilometres in length.
- d) Approximately **two-hundred and forty-five thousand** people live in Bergen.
- e) One of Jordan's highest mountain is Jabal Rami. It is **one thousand seven hundred and thirty-four** metres high.

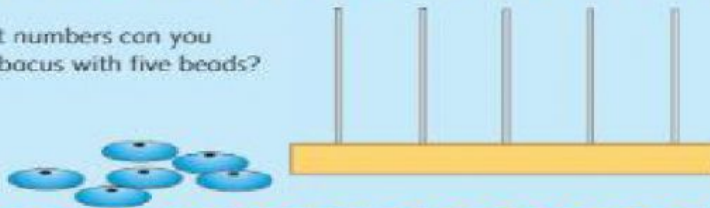
1734
2200
2450
51 000
245 000

3 Write the number shown on each abacus.



Try this

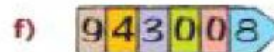
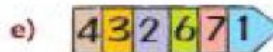
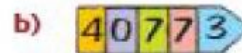
Which different numbers can you make on this abacus with five beads?



- 3 Write the value of each number shown by the arrow cards.

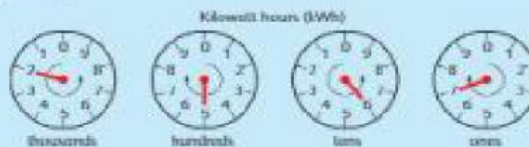
Example

→ $40\,000 + 2\,000 + 800 + 50 + 3 = 42\,853$



Try this

These dials show the amount of electricity used in a building. It is measured in kilowatt hours (kWh).



$2000 + 500 + 60 + 7 = 2567 \text{ kWh}$

How much electricity is used in these?

