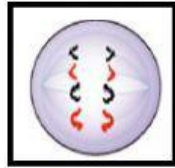
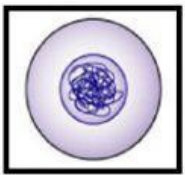
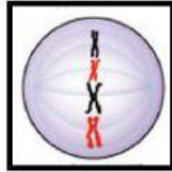
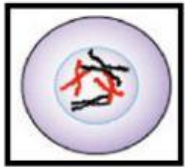
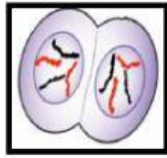
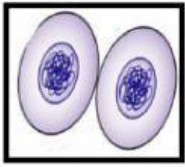


Mitosis Worksheet

Drag and Drop the 6 stages and put them in the correct order. Match each statement with its stage image.



The strands of DNA line up.

The nucleus of one cell (Parent Cells)

2 new daughter cells are formed.

The strands of DNA separate and are pulled apart to opposite poles.

The cell divides and two new cells start to form.

The DNA is copied.