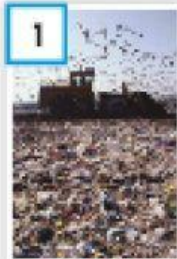


Lesson 3 • What is pollution?

1 Pollutants harm the planet. Match and write. Complete the sentence.

automobile sandstorm litter forest fire ~~landfill~~ chemicals



landfill



in the water

The pictures all show examples of _____.

2 Which pollutants are the result of human actions and which are natural pollutants? Write the words from 1.

1 Result of human actions: landfill, _____, _____, _____

2 Natural pollutants: _____, _____

3 What effect do these pollutants have on the environment? Match and write. Some pollutants have the same effect.

- | | |
|---|---|
| 1 Automobiles <u>c</u> | a They poison and kill plants, fish, and animals that live in or near the water. |
| 2 Sandstorms ____ | b They throw dust, ash, and other particles into the air. They can block the sunlight for a long period of time. This can create winter conditions and upsets the life cycle of plants and animals. |
| 3 Coal-burning power plants ____ | c They release harmful chemicals into the air. Plants, animals, and people are poisoned. |
| 4 Factories that dump chemicals into water ____ | d It spreads harmful bacteria and disease. It can harm land and sea animals. |
| 5 Volcanic eruptions ____ | e Dust and sand covers the ground, and plants die. |
| 6 Leaks from tankers carrying oil ____ | |
| 7 Forest fires ____ | |
| 8 Litter ____ | |