



COLEGIO NUESTRA SEÑORA DEL ROSARIO BOGOTÁ

SCIENCE DIAGNOSTIC TEST

TEACHER: MELISSA FERNANDA PAEZ

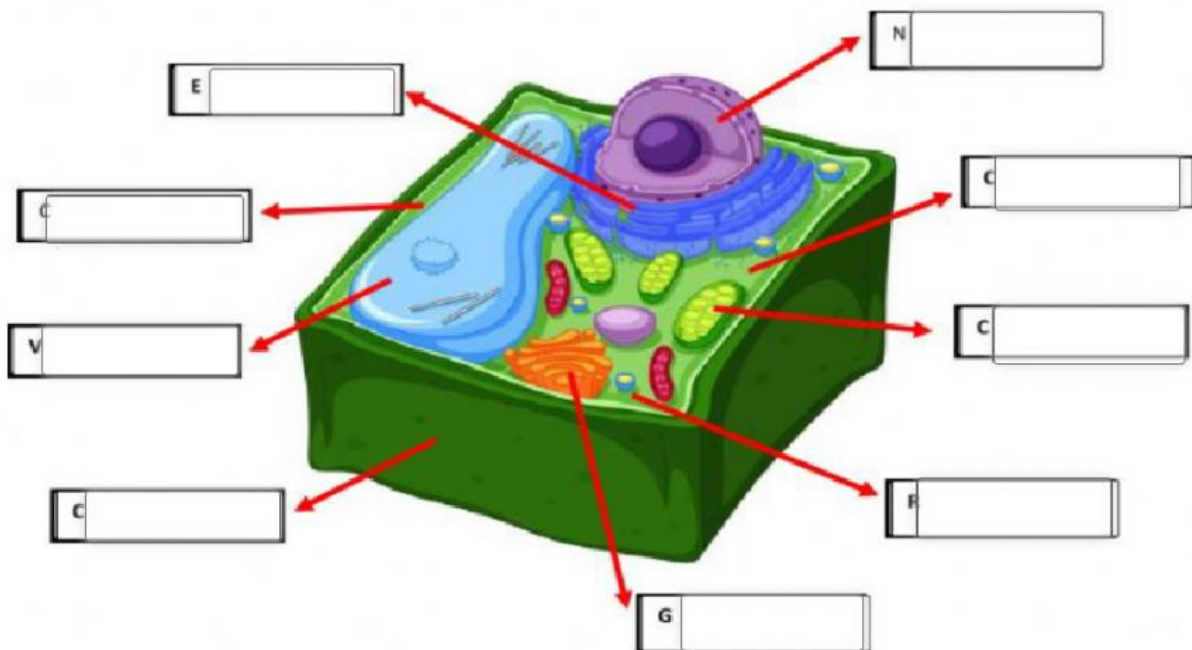
1- CLASSIFY **BIOTIC** and **ABIOTIC** FACTORS



BIOTIC FACTORS

ABIOTIC FACTORS

2- Complete the PLANT CELL ORGANELLES

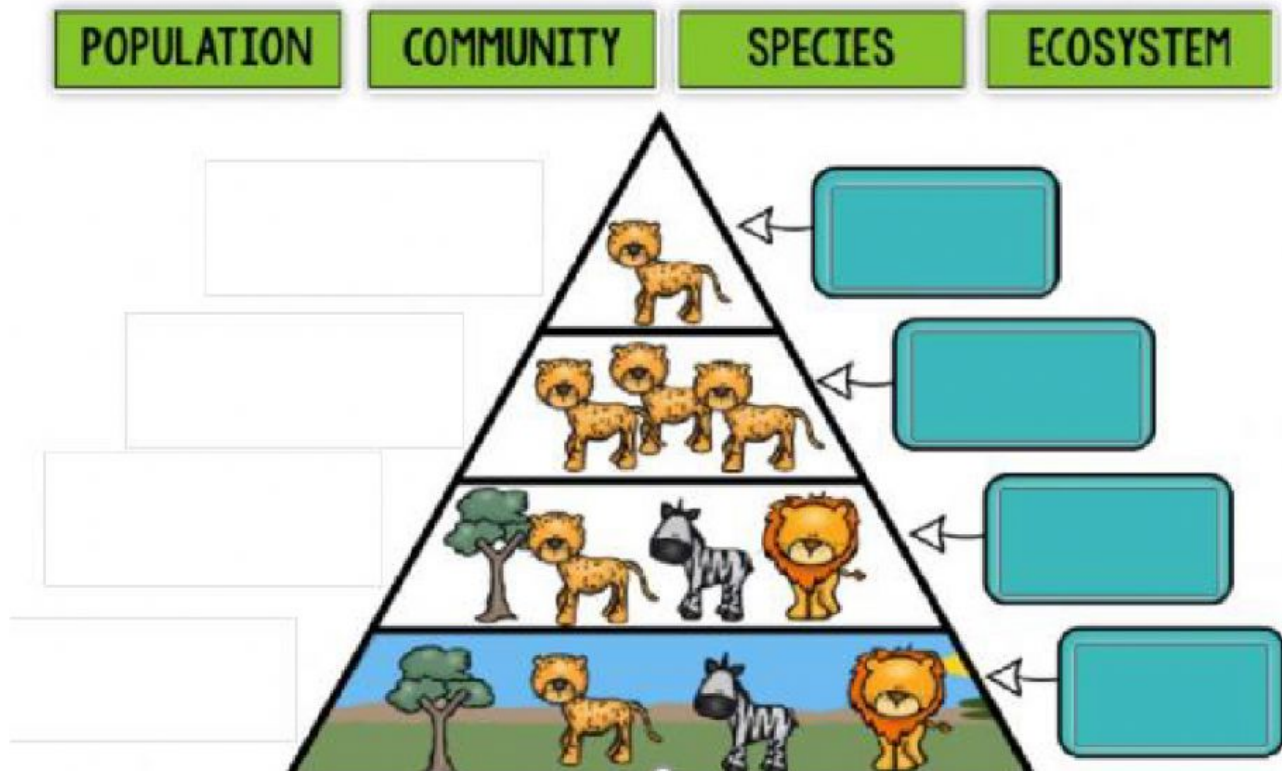


3- CLICK AND DRAG the pictures below to the correct column

species	population	community



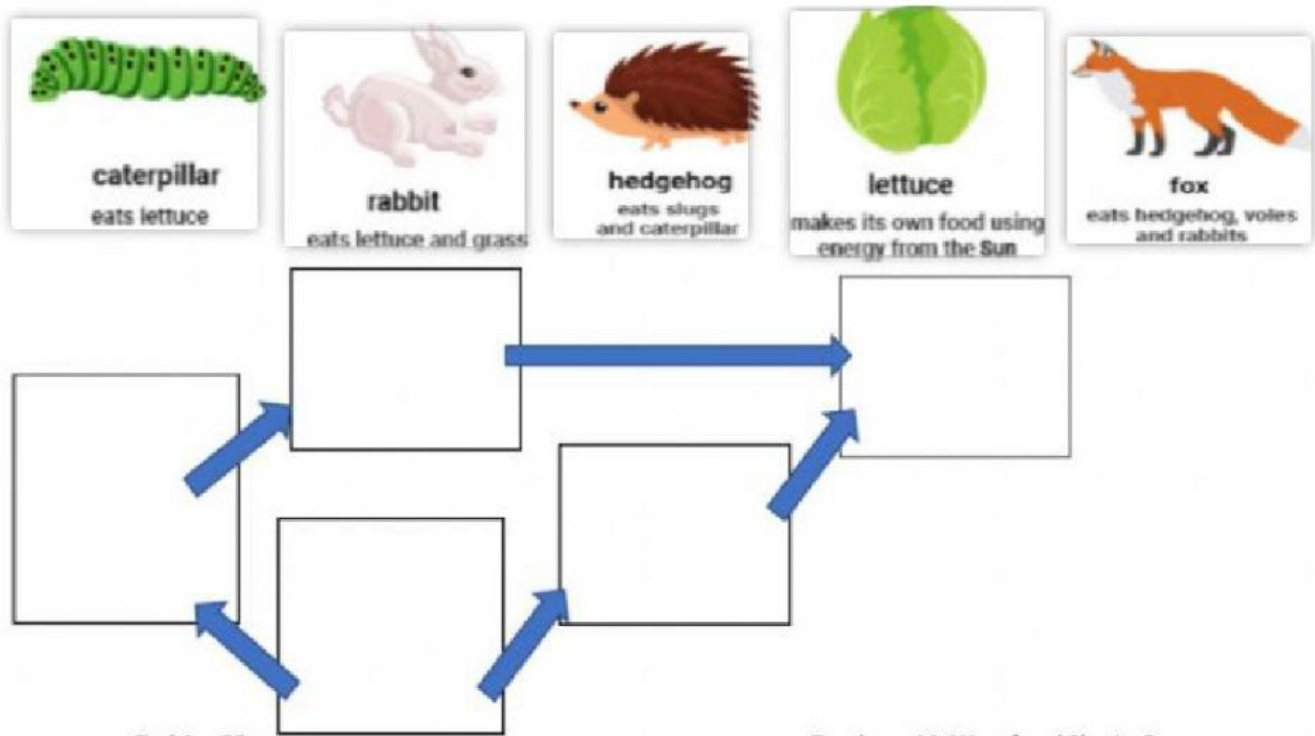
4- DRAG AND DROP THE WORDS ACCORDING TO THE PICTURES



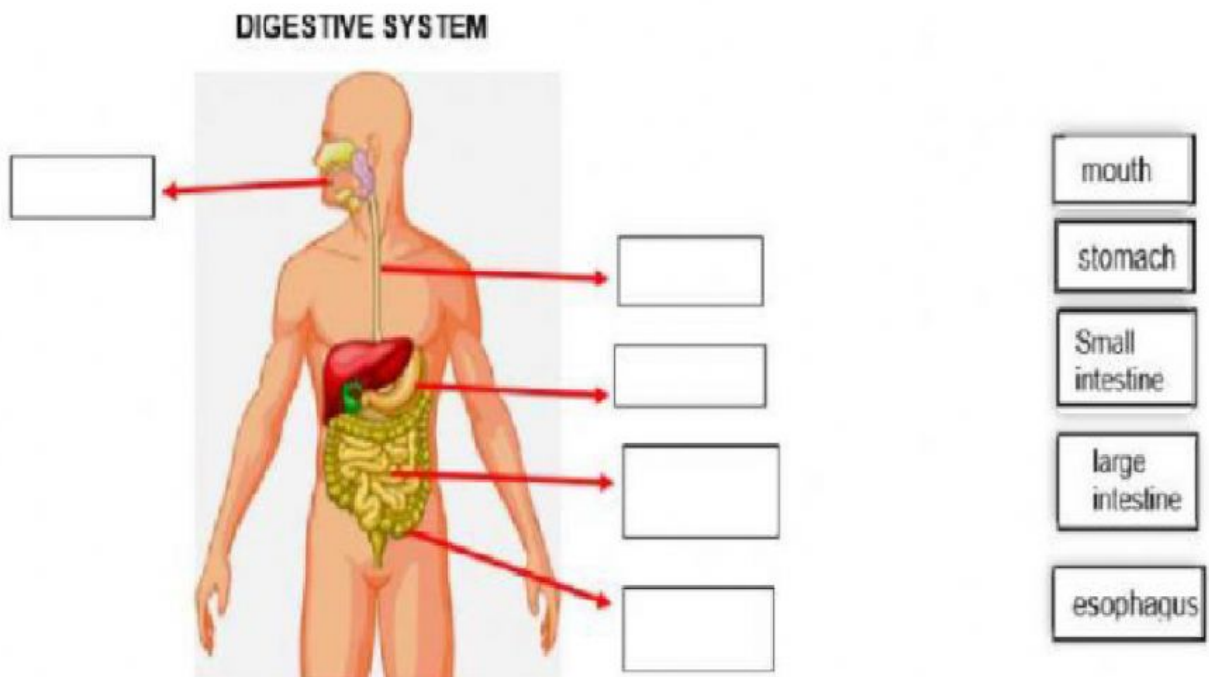
5- OBSERVE the picture and complete the name of the symbiotic relationship (MUTUALISM, COMMENSALISM, PARASITISM, PREDATION,COMPETITION)



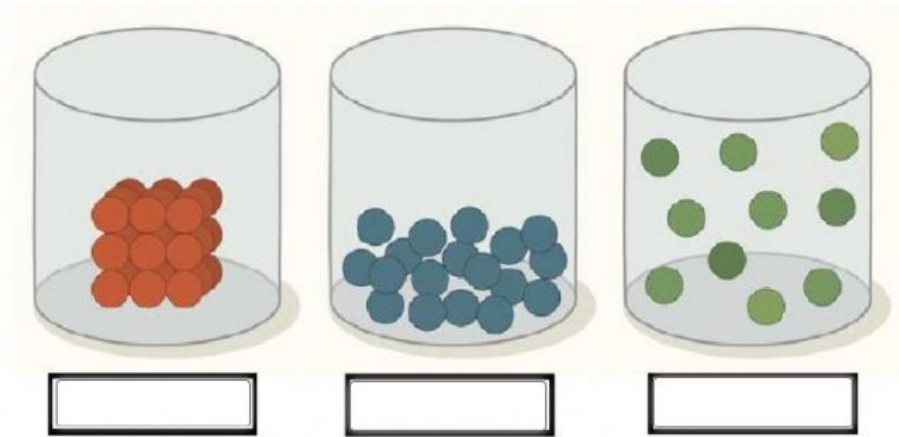
6- ORGANIZE THE FOOD CHAIN



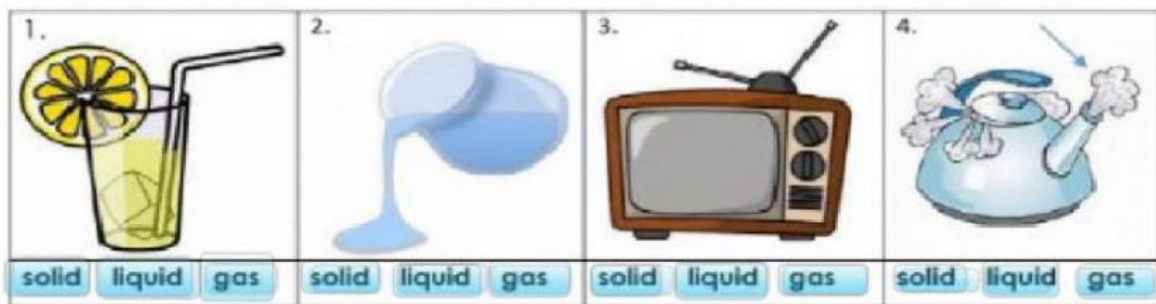
7- COMPLETE THE DIGESTIVE SYSTEM PARTS



8- OBSERVE the particles of matter and write the states in each picture



9- Look at the items below and select the state



10- Observe and select the change of state of matter.



Melting-fusion

condensation



deposition

vaporization



condensation

sublimation

