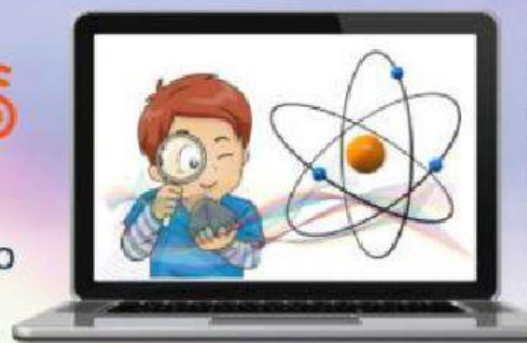




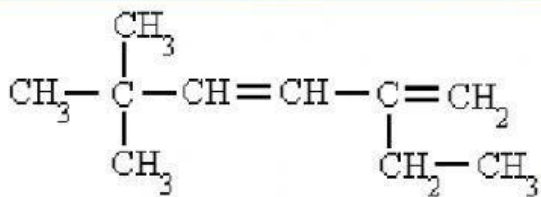
ALQUENOS

PROF. LIZETH DANITZA QUISPE VELASCO

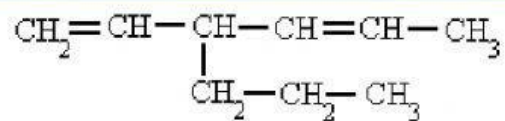


SELECCIONA LA CARITA QUE CORRESPONDE AL NOMBRE CORRECTO DE ESTOS COMPUESTOS:

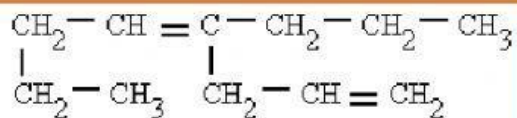
$\text{CH}_3 - \text{CH}_2 - \text{CH} = \text{CH}_2$	$\text{CH}_3 - \text{CH} = \text{CH} - \text{CH}_2 - \text{CH}_3$
<input type="radio"/> 3-buteno	<input type="radio"/> 4-penteno
<input type="radio"/> 1-buteno	<input type="radio"/> 3-penteno
<input type="radio"/> buteno	<input type="radio"/> 2-penteno
$\text{CH}_2 = \text{CH} - \text{CH} = \text{CH}_2$	$\text{CH}_2 = \text{CH} - \text{CH} = \text{CH} - \text{CH} = \text{CH}_2$
<input type="radio"/> 1,3-buteno	<input type="radio"/> 1,3,5-hexadieno
<input type="radio"/> 1,3-butadieno	<input type="radio"/> 1,3,5-hexeno
<input type="radio"/> 2,3-butadieno	<input type="radio"/> 1,3,5-hexatrieno
$\begin{array}{c} \text{CH}_2 = \text{CH} - \text{CH}_2 - \text{CH} - \text{CH}_3 \\ \\ \text{CH}_3 \end{array}$	$\begin{array}{c} \text{CH}_3 - \text{CH} - \text{CH} = \text{CH} - \text{C} = \text{CH}_2 \\ \qquad \qquad \\ \text{CH}_2 - \text{CH}_3 \qquad \text{CH}_3 \end{array}$
<input type="radio"/> 2-metil-4-penteno	<input type="radio"/> 2,5-dimetil-1,3-heptadieno
<input type="radio"/> 4-metil-1-penteno	<input type="radio"/> 5-etil-2-metil-1,3-hexadieno
<input type="radio"/> 2-metil-5-penteno	<input type="radio"/> 2-etil-5-metil-3,5-hexadieno



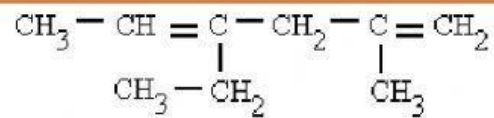
- ☺ 5-etil-2,2-dimetil-3,5-hexadieno
- ☺ 2,2-dimetil-5-etil-3,5-hexadieno
- ☺ 2-etil-5,5-dimetil-1,3-hexadieno



- ☺ 3-propil-1,4-hexadieno
- ☺ 4-etenil-2-hepteno
- ☺ 4-propil-2,5-hexadieno



- ☺ 4(2-propenil)-4-octeno
- ☺ 4-propil-4,7-octadieno
- ☺ 4-propil-1,4-octadieno



- ☺ 3-etil-5-metil-2,5-hexadieno
- ☺ 4-etil-2-metil-1,4-hexadieno
- ☺ 2-metil-4-etil-1,4-hexadieno

