



1. LIVING ORGANISMS: COMPLETE THESE SENTENCES WITH THE WORDS PROVIDED.

functions • processes • multicellular • single
living • cells • tiny • organism

- All living organisms consist of _____ units called _____.
- These _____ organisms can be unicellular or _____.
- In a unicellular organism, the _____ cell performs all of the life _____.
- In a multicellular _____, many different cells perform different _____.

2. WHICH LIFE PROCESSES DO THESE ACTIONS SHOW?

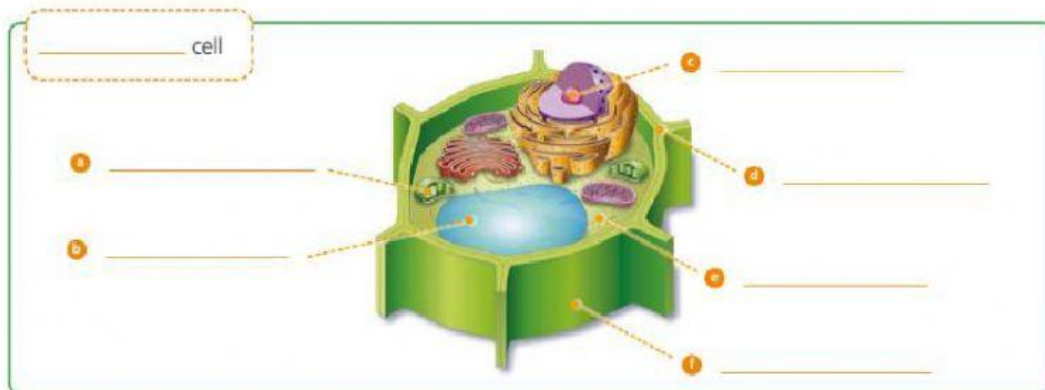
action	life process
a. A plant grows in the direction of sunlight.	_____
b. A fungus feeds on a dead tree trunk.	_____
c. A male and a female zebra produce a baby zebra.	_____
d. A bacterium divides into two.	_____

3. THE CELL: COMPLETE THE TEXT.

The (a) _____ controls all the functions of the cell. The cell is protected by a 'skin' which is called the (b) _____. Plant cells also have a hard (c) _____ which gives the cell its shape. The cell is filled with a jelly-like substance called (d) _____. Plant cells and most animal cells have (e) _____. They contain water and minerals, but only plant cells have (f) _____. They use these for photosynthesis.

4. LABEL THESE TWO CELLS USING THE WORDS IN THE BOX. THERE ARE SOME EXTRA WORDS AND SOME WORDS THAT NEED TO BE USED TWICE (IN BOTH CELLS)

chloroplast • nucleus • vacuole • blade • animal
cell membrane • cell wall • plant • protist • cytoplasm



5. HOW ARE LIVING THINGS ORGANIZED? MATCH THE KEY WORDS WITH THE DEFINITION

cell	The unit of a living organism, contains parts to carry out life processes.
organ system	Group of different organs working together to carry out a job.
tissue	Group of cells of one type.
organ	Group of different tissues working together to carry out a job.

6. DECIDE IF THESE STATEMENTS ARE TRUE OR FALSE

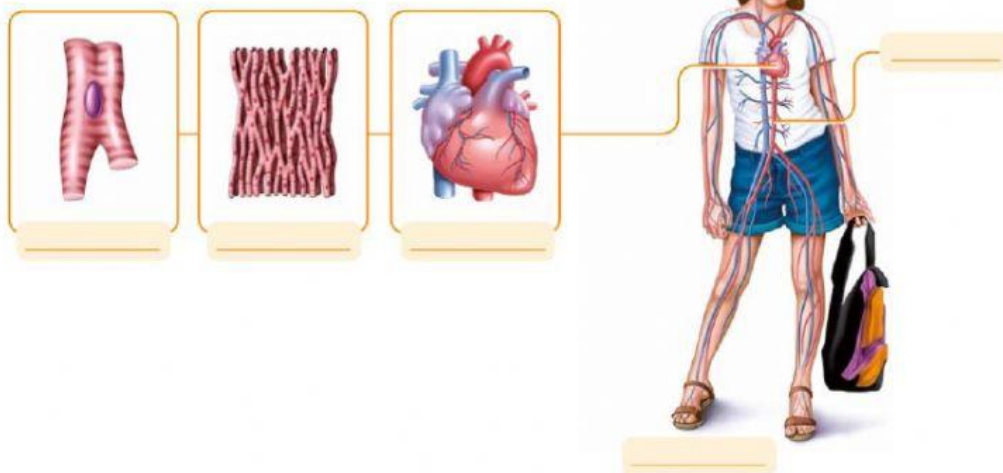
	true	false
In most multicellular organism, cells are specialised.		
Specialised cells perform a unique function.		
Some example of plant cells are red blood and white blood cells.		
Root hair cells absorb sunlight so the plants can perform photosynthesis.		
The nerve cells carry information form the brain to the rest of the body.		

7. ORDER THE STRUCTURES FROM THE SIMPLEST (1) TO THE MOST COMPLEX (5)

organ
 tissue
 organism
 system
 cell

8. LABEL EACH PICTURE USING THE WORDS OF EXERCISE 7.

5 Label each picture and complete the sentences.



9. COMPLETE THE SENTENCES.

- Cells perform the same function group together to form _____.
- The heart and blood vessels are part of the circulatory _____.
- The heart is an example of an _____.
- The smallest living unit is a _____.
- Systems are the most complex structures in a living _____.