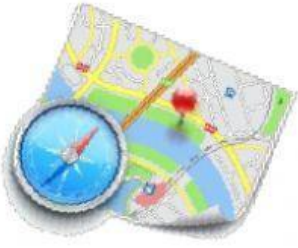
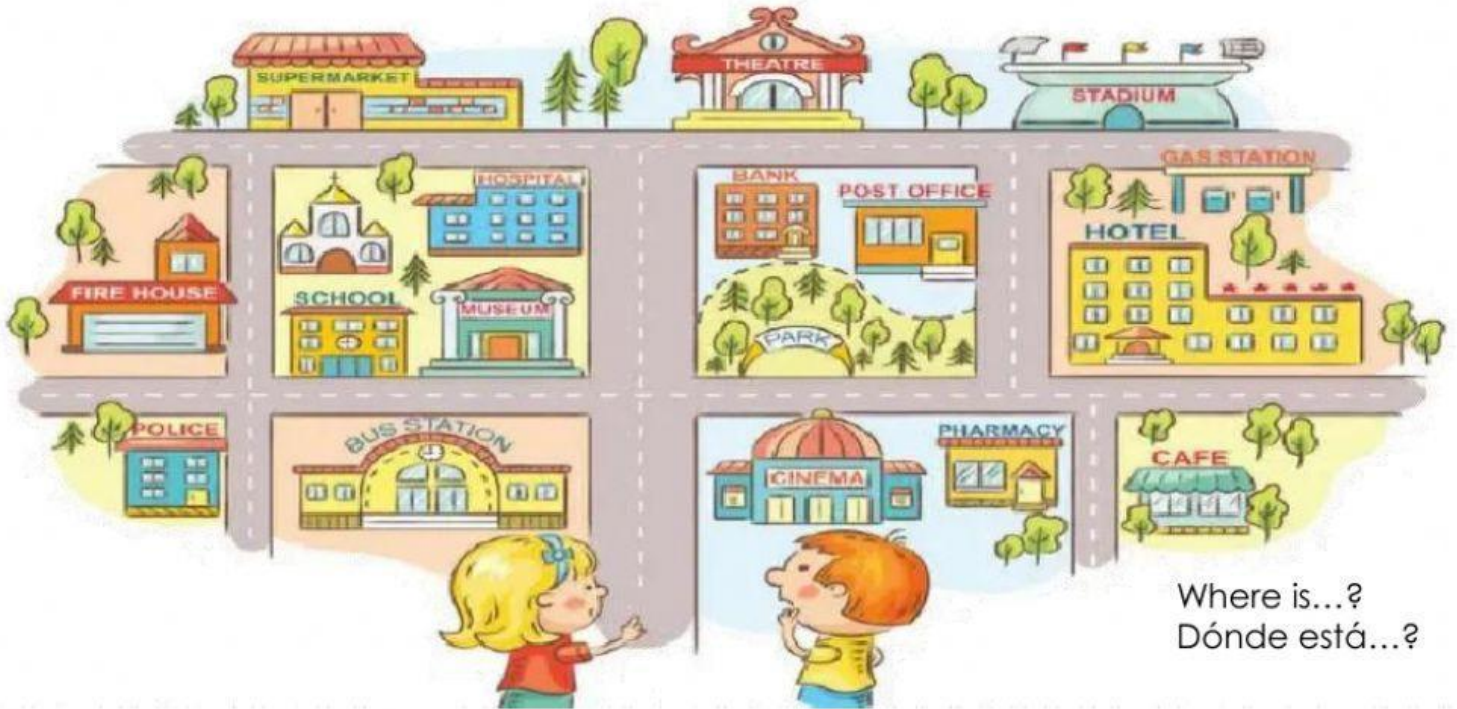


# WHERE IS THE...?

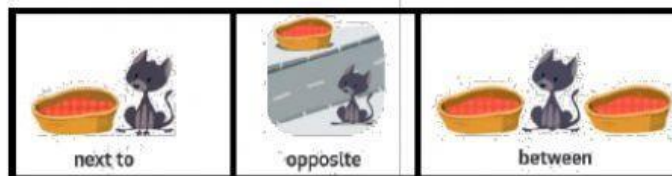
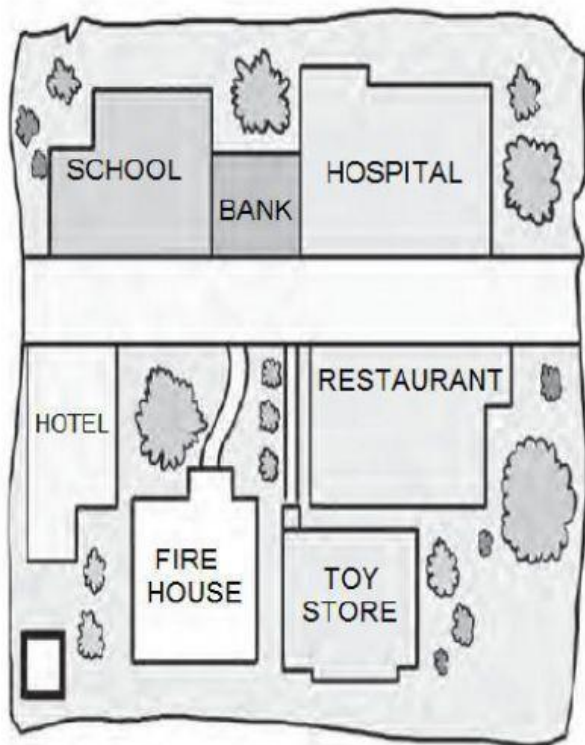


\* Look at the map and choose the correct preposition.



- 1) Where is the CAFE? It is \_\_\_\_\_ the PHARMACY.
- 2) Where is the SCHOOL? It is \_\_\_\_\_ the MUSEUM.
- 3) Where is the THEATRE? It is \_\_\_\_\_ the SUPERMARKET and the STADIUM.
- 4) Where is the POLICE? It is \_\_\_\_\_ the BUS STATION.
- 5) Where is the HOTEL? It is \_\_\_\_\_ the CAFE.
- 6) Where is the BUS STATION? It is \_\_\_\_\_ the POLICE and the CINEMA.
- 7) Where is the BANK? It is \_\_\_\_\_ the POST OFFICE.

\* Look at the map then read and choose T (true) or F (false).



1) The SCHOOL is <b>opposite</b> the BANK.	<b>T</b>	<b>F</b>
2) The HOSPITAL is <b>opposite</b> the RESTAURANT.	<b>T</b>	<b>F</b>
3) The BANK is <b>between</b> the SCHOOL and the HOSPITAL.	<b>T</b>	<b>F</b>
4) The TOY STORE is <b>next to</b> the FIRE HOUSE.	<b>T</b>	<b>F</b>
5) The HOTEL is <b>opposite</b> the RESTAURANT.	<b>T</b>	<b>F</b>
6) The BANK is <b>next to</b> the HOSPITAL.	<b>T</b>	<b>F</b>

\* Listen and read about David's city. Then complete the chart.

Places you can find in Santiago:

- \_\_\_\_\_
- \_\_\_\_\_
- \_\_\_\_\_
- \_\_\_\_\_
- \_\_\_\_\_
- \_\_\_\_\_
- \_\_\_\_\_
- \_\_\_\_\_
- \_\_\_\_\_
- \_\_\_\_\_

Hello! My name is David. I live in Santiago. It is a beautiful city. Here you can find many interesting places like museums, the library, the zoo, stadiums and parks. In Santiago we have big malls, supermarkets, cinemas, hospitals and many restaurants where you can eat delicious food. Come and visit us!

