

Click on the microphone and say the word or words that correspond.

WHEN WE REPORT SOMEONE'S WORDS,
WE CAN DO IT IN TWO WAYS:

DIRECT SPEECH

DIANE SAID, "I HAPPY TODAY."

REPORTED/INDIRECT SPEECH

DIANE SAID (THAT) HAPPY

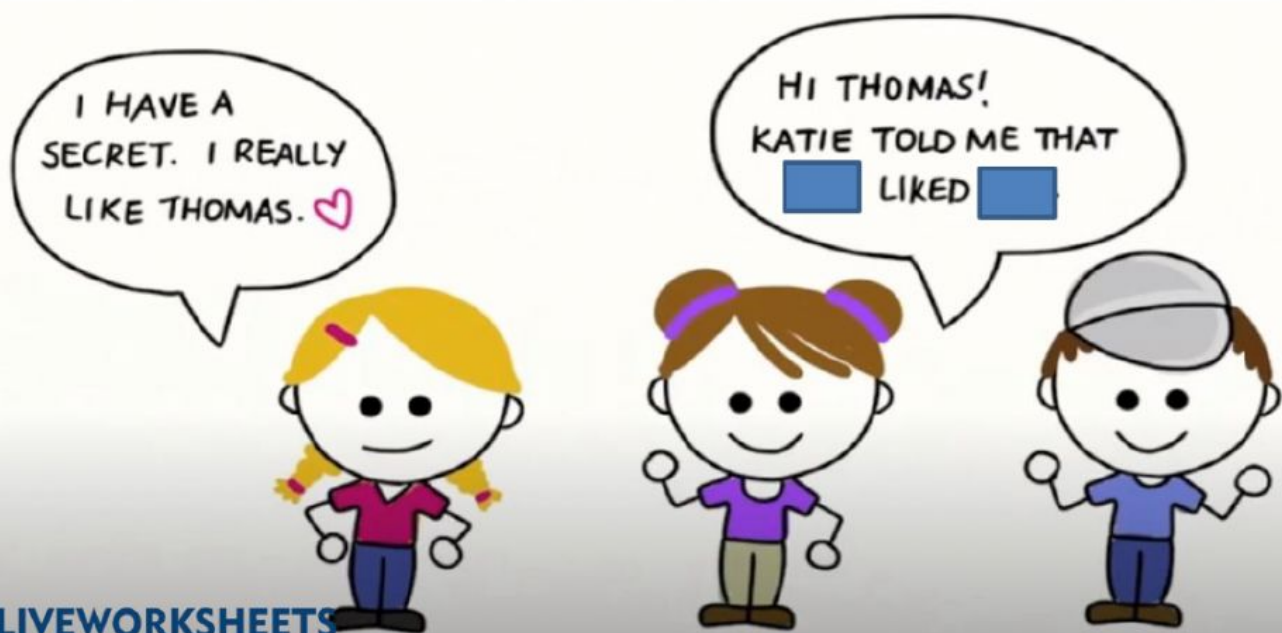
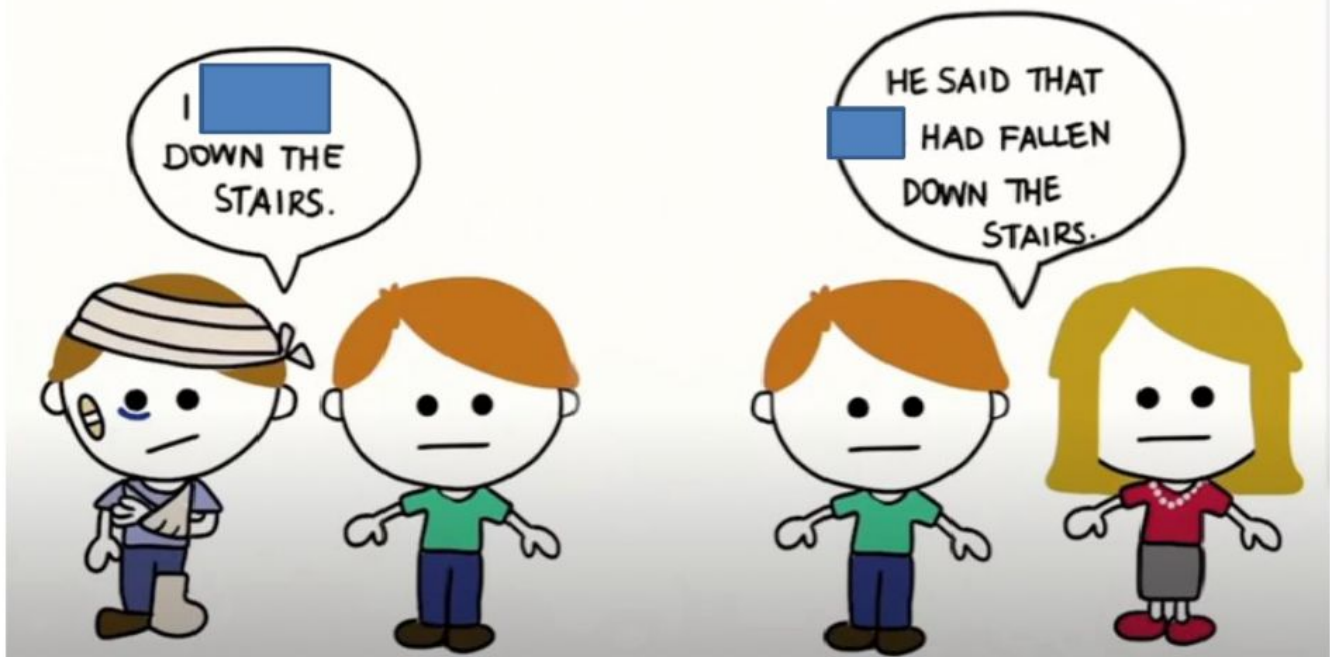
WHEN WE CHANGE DIRECT SPEECH TO REPORTED
SPEECH, WE MUST OFTEN CHANGE THE TENSE.

EX. SHE SAID, "I ^{PRESENT} AM TIRED." ← DIRECT SPEECH
 WAS TIRED. ← REPORTED SPEECH
_{PAST}

HE SAID, "I HAVE SEEN SNOW." ← DIRECT
HE SAID THAT SNOW. ← REPORTED



THE CHILDREN SAID, "WE ARE LISTENING." ← DIRECT
THE CHILDREN SAID THAT [] LISTENING. ← REPORTED



WHEN CHANGING DIRECT SPEECH TO
REPORTED SPEECH, WE OFTEN NEED
TO CHANGE THE TIME.

TOMORROW →



NEXT (WEEK) →



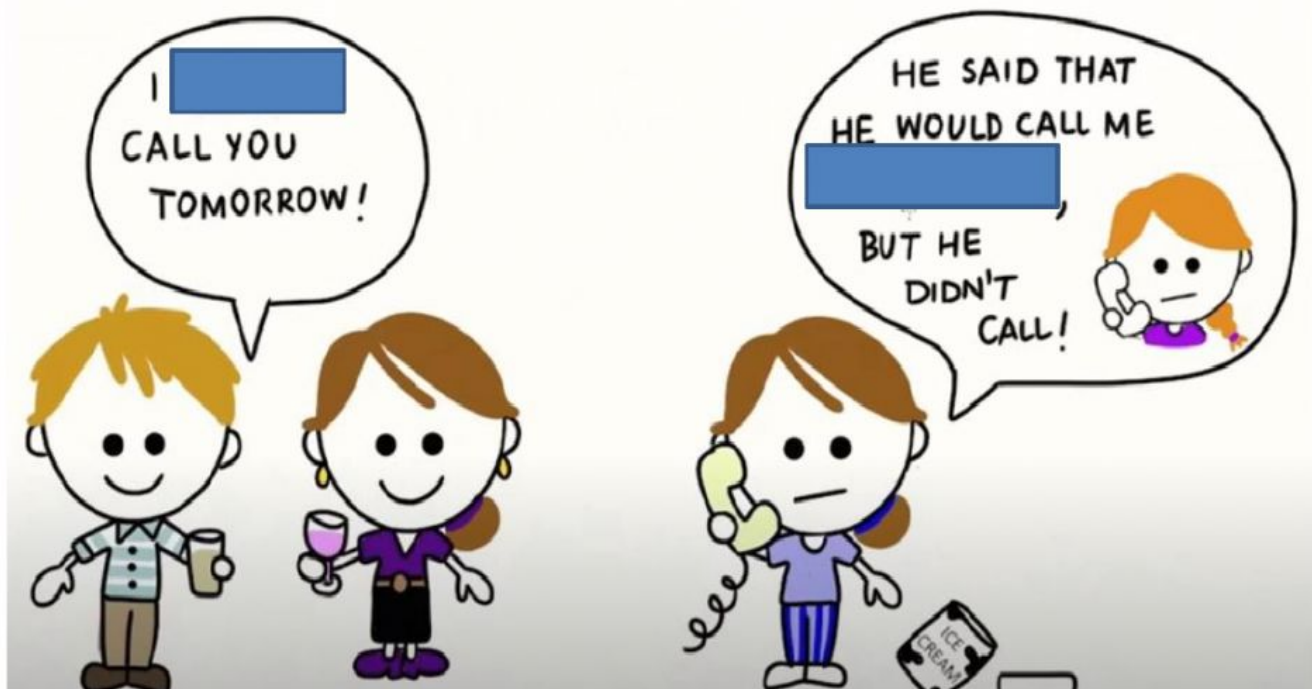
(WEEK)

YESTERDAY →



= THE
PREVIOUS DAY

LAST (WEEK) → THE (WEEK) BEFORE = THE
PREVIOUS (WEEK)





CAN YOU HELP ME
CARRY MY GROCERIES?

YES/NO
QUESTIONS



HE ASKED IF
I COULD
HELP HIM.

WE MUST
ADD THE WORD
"IF"