

Worksheet 4

Name \_\_\_\_\_ Class \_\_\_\_\_ No. \_\_\_\_\_  
Date \_\_\_\_\_

Read the facts of the animals. Write the facts in the correct forms.

**AMAZING FACTS**

A beaver is a mammal. It is 120 cm long. It eats leaves and trees. It lives near the river. A beaver can cut down trees with its teeth. It can build a dam to stop up a river.

A kangaroo is a mammal. It is 180 cm tall. It eats grass and leaves. It lives in Australia. A kangaroo can leap or jump to 12 m.

A king cobra is a reptile. It is 4.5 m long. It eats small animals. It lives in India and Southeast Asia. A king cobra is the largest poisonous snake in the world. Its bite can kill an elephant.

An African elephant is a mammal. It stands 13 feet (4m). It weighs 5,000 kg. It eats grass and leaves. It lives in the jungle and grassland. An African elephant is the largest land animal. It is larger than an Asian elephant.

A grizzly bear is a mammal. It weighs 800 kg. It eats animals and fruit. It lives in the mountains. Grizzly bears sleep for 4-5 months every year.

A whale shark is a fish. It can grow to a length of 60 feet(18m). It eats fish and sea animals. It lives in the ocean. A whale shark is the largest fish. Its length is more than 10 times the height of an adult human.

An ostrich is a bird. It is 275 cm tall. It eats grass and insects. It lives in the grassland. An ostrich is the largest bird. It can run 70 km per hour.

A blue whale is a mammal. It grows to a length of 100 feet (30m) and it weighs 100 tons. It eats krill (small shrimps). It lives in the sea. A blue whale is the largest animal in the world. It eats 4,000 kg of krill a day.

A polar bear is a mammal. It weighs 900 kg. It eats seals and other animals. It lives in snow and ice of the Arctic Ocean. Polar bears are covered with white fur on their body and on their paws. They can walk or run on ice without slipping.

A cheetah is a mammal. It weighs 260 kg. It eats other animals. It lives in the jungle. A cheetah is the fastest land animal. It can run 70 miles (113 km) per hour.

Example :



1. Beaver \_\_\_\_\_ .  
 Group mammal \_\_\_\_\_ .  
 Size 120 cm. long \_\_\_\_\_ .  
 Food leaves, trees \_\_\_\_\_ .  
 Habitat river \_\_\_\_\_ .

An Amazing Fact a beaver can cut down trees with its teeth. It can build a dam to stop up a river  
 \_\_\_\_\_  
 \_\_\_\_\_

2. Kangaroo \_\_\_\_\_



Group \_\_\_\_\_  
 Size \_\_\_\_\_  
 Food \_\_\_\_\_  
 Habitat \_\_\_\_\_

An Amazing Fact \_\_\_\_\_  
 \_\_\_\_\_  
 \_\_\_\_\_

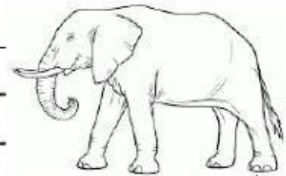
3. King Cobra \_\_\_\_\_



Group \_\_\_\_\_  
 Size \_\_\_\_\_  
 Food \_\_\_\_\_  
 Habitat \_\_\_\_\_

An Amazing Fact \_\_\_\_\_  
 \_\_\_\_\_  
 \_\_\_\_\_  
 \_\_\_\_\_

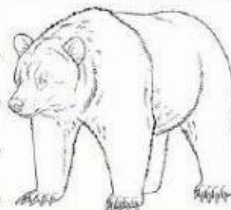
4. \_\_\_\_\_



Group \_\_\_\_\_  
 Size \_\_\_\_\_  
 Food \_\_\_\_\_  
 Habitat \_\_\_\_\_

An Amazing Fact \_\_\_\_\_  
 \_\_\_\_\_  
 \_\_\_\_\_  
 \_\_\_\_\_

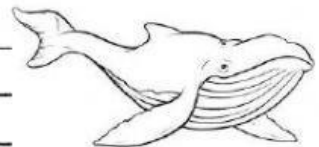
5. \_\_\_\_\_



Group \_\_\_\_\_  
 Size \_\_\_\_\_  
 Food \_\_\_\_\_  
 Habitat \_\_\_\_\_

An Amazing Fact \_\_\_\_\_  
 \_\_\_\_\_  
 \_\_\_\_\_  
 \_\_\_\_\_

6. \_\_\_\_\_



Group \_\_\_\_\_  
 Size \_\_\_\_\_  
 Food \_\_\_\_\_  
 Habitat \_\_\_\_\_

An Amazing Fact \_\_\_\_\_  
 \_\_\_\_\_  
 \_\_\_\_\_  
 \_\_\_\_\_