

Dynasties of Ancient China

The civilization of Ancient China dates back thousands of years. Over this long period of time much of China was ruled by different dynasties.

A **dynasty** is when one family rules a country or region over a long period of time. Generally, the head of the family will be the ruler of the land, like an emperor or king. When that ruler dies, another member of the family will take power, usually the oldest son. When a new family takes control, then a new dynasty begins.



How do you think a new family became a dynasty?

Write one characteristic for each Dynasty

1- Xia Dynasty

2- Shang Dynasty

3- Zhou Dynasty

4- Qin Dynasty

5- Han Dynasty

6- Six Dynasties

7- Sui Dynasty

8- Tang Dynasty

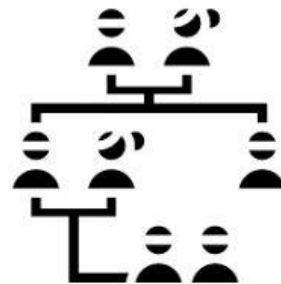
9- Five Dynasties

10- Song Dynasty

11- Yuan Dynasty

12- Ming Dynasty

13- Qing Dynasty



What do you think happened after the last dynasty?

The Rise and Fall of Dynasties

Many of China's dynasties rose and fell in a similar pattern. The Chinese believed that each dynasty first gained and then lost the Mandate of Heaven.

