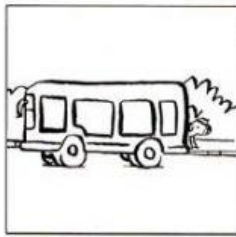




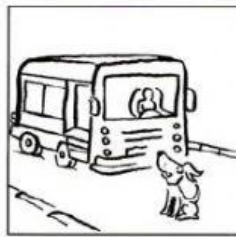
### LISTENING PART

Listen and choose the best option a,b,c.

1. Which is Jill's dog?



A ☐

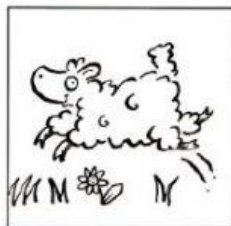


B ☐

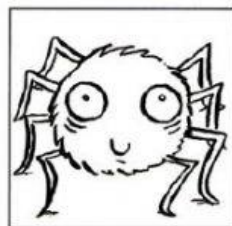


C ☐

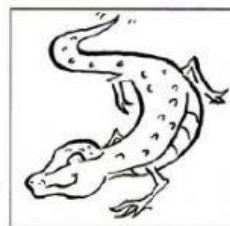
2. Which is Ben's favorite animal?



A ☐



B ☐

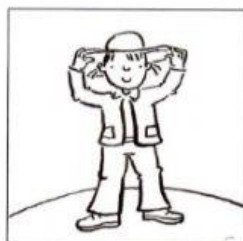


C ☐

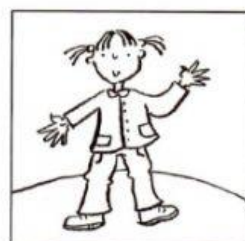
3. Which girl is Lucy?



A ☐



B ☐



C ☐

4. What's mom doing?



A ☐



B ☐



C ☐

5. What's dad doing?



A ☐



B ☐

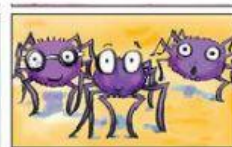


C ☐

## READING

6. They are small, they have 8 legs and they can climb

- a. Goats
- b. Cows
- c. Spiders



7. They are black and white, they produce milk and they can walk

- a. Lizards
- b. Cows
- c. Donkeys



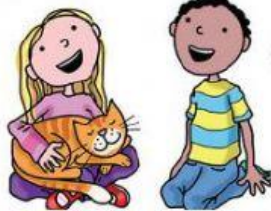
8. They are green and they can jump and swim.

- a. Frogs
- b. Cows
- c. Lizards



9. Choose the correct option

I love cats



- a. My name is Jhon
- b. My favorite toy is a robot
- c. So do I

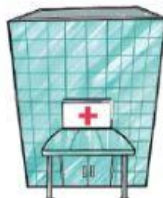
10. Choose the correct option

I love mice



- a. My name is Sara
- b. I don't
- c. My favorite color is yellow

11. Where is Supergirl?



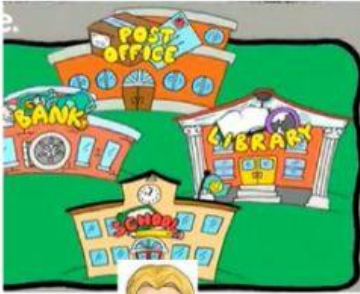
- a. Supergirl is in front of the hospital
- b. Supergirl is behind the bank
- c. Supergirl is between the bank and the hospital

12. Where is Flash?



- a. Flash is next to the street
- b. Flash is in front of the street
- c. Flash is behind the street

13. Where is Thor?



- a. Thor is in front of the school
- b. Thor is behind the school
- c. Thor is next to the school

Where can you find this?



- a. In a park
- b. In a coffee shop
- c. In a bank

15. Where can you play?



- a. On the street
- b. In a park
- c. In a library

## WRITING

Complete the names



16. H - \_\_\_\_\_ - t



19. S - h - \_\_\_\_\_ - r - t



17. J - \_\_\_\_ - a - n - s



18. P - \_\_\_\_ - r - s - e



20. d - r - \_\_\_\_ - s - s