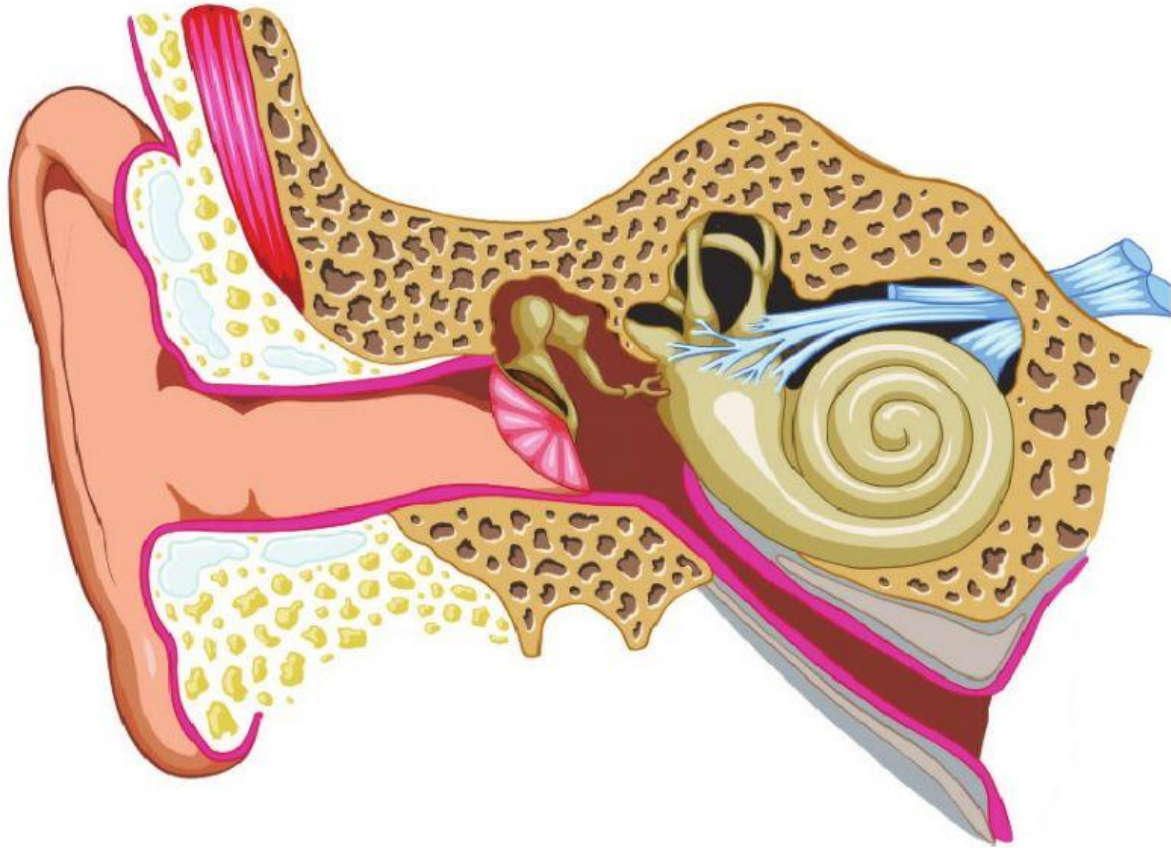


# STRUCTURE AND FUNCTION OF EAR

TOUCH ON EACH PART OF EAR TO HEAR THEIR FUNCTIONS. THEN  
CHOOSE THE RIGHT ANSWERS FROM THE TABLE GIVEN BELOW



AMPLIFY AND TRANSMIT THE VIBRATIONS OF THE TYMPANUM TO THE INTERNAL EAR	
THE PART PRESENT IN THE INTERNAL EAR WHICH HELPS IN HEARING	
CONNECTS THE MIDDLE EAR AND THE PHARYNX	
PART WHICH VIBRATES IN RESONANCE WITH SOUND WAVES	
PART WHICH CARRIES SOUND WAVES TO THE TYMPANUM	
NERVE WHICH CARRIES IMPULSES TO CEREBELLUM	

തയ്യാറാക്കിയത് : സെബിൻ തോമസ് സി, ജി ബി എച്ച് എസ് വടക്കാഞ്ചേരി