

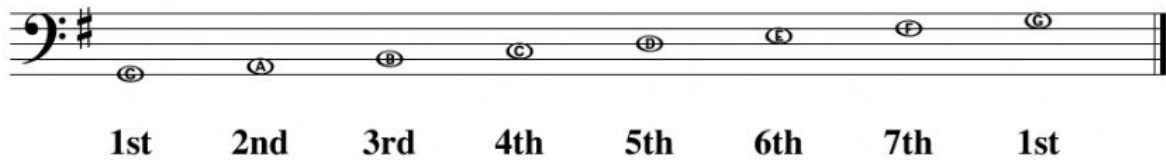
Scale Degrees

As previously discussed, a scale can be in ascending or descending order. Although a scale can appear in 2 different ways, the original position does not change.

Example:

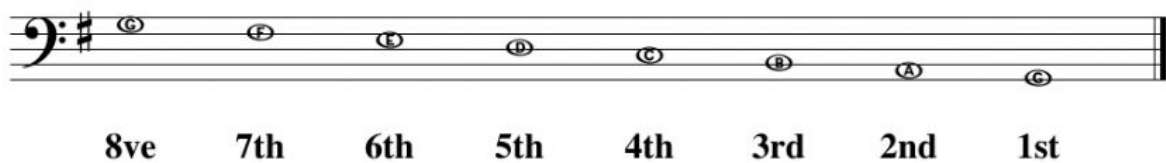
Key: G Major, Ascending

6



Key: G Major, Descending

7



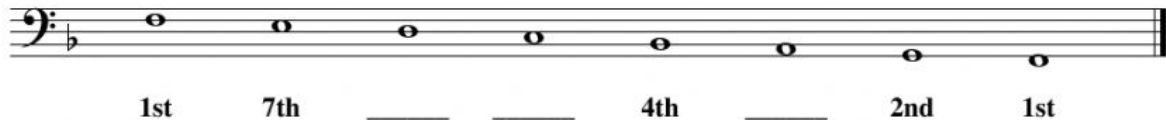
Looking at the scale above, it would be safe to assume that the order of the scale has a direct influence on the scale degrees, **this however is not true**. The correlation between the two scales are the pitches and scale degrees. The placement of a note doesn't determine its scale degree. The original position of the pitch dictates its scale degree. Notice in the ascending scale, **B** is the **3rd** scale degree. The note **B** appears at the back in the second scale, but it remains as the **3rd** scale degree.

Let's try another scale.

Answer the question then identify the scale degrees of the indicated notes.

This is in the key of _____ major.

8



This is in the key of _____ major.

9



1. Write the letter name of the 4th scale degree of the scale above? _____

More products like this can be found at:

<https://www.teacherspayteachers.com/Store/Magic-Music-Theory-And-History>
You can visit **Magic Music Theory and History** on facebook for further updates.