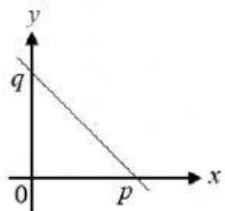
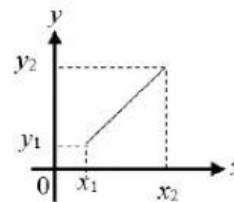


1. Lengkapi rajah di bawah menggunakan maklumat yang berikut :

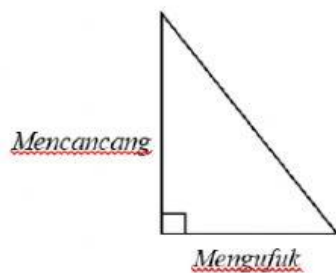
<u>Pintasan-x</u>	$(x_2 - x_1)$	$(y_2 - y_1)$	<u>Pintasan-y</u>
	Jarak <u>mengufuk</u>	Jarak <u>mencancang</u>	



Kecerunan = -  $\frac{\boxed{\phantom{0000}}}{\boxed{\phantom{0000}}}$



Kecerunan =  $\frac{\boxed{\phantom{0000}}}{\boxed{\phantom{0000}}}$



Kecerunan =  $\frac{\boxed{\phantom{0000}}}{\boxed{\phantom{0000}}}$

4. Nyatakan jarak mencancang dan jarak mengufuk bagi pasangan titik yang diberikan.

(a) (3, 0) dan (-2, 6)

$$a) \frac{y_2 - y_1}{x_2 - x_1} = \frac{6 - 0}{-2 - 3}$$

$$= \frac{6}{-5}$$

Jarak mencancang =

Jarak mengufuk =

(b) (1, 1) dan (6, 5)

$$b) \frac{y_2 - y_1}{x_2 - x_1} = \frac{5 - 1}{6 - 1}$$

$$= \frac{\boxed{\phantom{000}}}{\boxed{\phantom{000}}}$$

Jarak mencancang =

Jarak mengufuk =

(c) (3, 1) dan (1, 5)

$$\frac{y_2 - y_1}{x_2 - x_1} = \frac{\boxed{\phantom{000}}}{\boxed{\phantom{000}}}$$

$$= \frac{\boxed{\phantom{000}}}{\boxed{\phantom{000}}}$$

Jarak mencancang =

Jarak mengufuk =

(d) (0, 0) dan (4, 4)

$$\frac{y_2 - y_1}{x_2 - x_1} = \frac{\boxed{\phantom{000}}}{\boxed{\phantom{000}}}$$

$$= \frac{\boxed{\phantom{000}}}{\boxed{\phantom{000}}}$$

Jarak mencancang =

Jarak mengufuk =

(e) (1, -2) dan (2, 4)

$$\frac{y_2 - y_1}{x_2 - x_1} = \frac{\boxed{\phantom{000}}}{\boxed{\phantom{000}}}$$

$$= \frac{\boxed{\phantom{000}}}{\boxed{\phantom{000}}}$$

Jarak mencancang =

Jarak mengufuk =

(f) (3, 6) dan (6, -3)

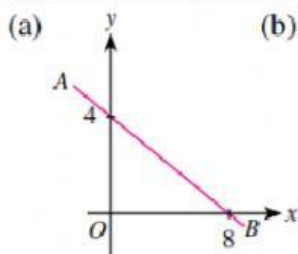
$$\frac{y_2 - y_1}{x_2 - x_1} = \frac{\boxed{\phantom{000}}}{\boxed{\phantom{000}}}$$

$$= \frac{\boxed{\phantom{000}}}{\boxed{\phantom{000}}}$$

Jarak mencancang =

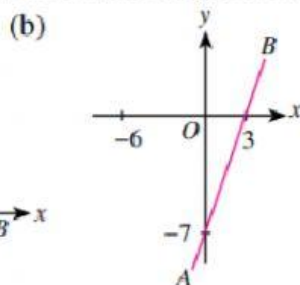
Jarak mengufuk =

5. Nyatakan nilai pintasan-x dan nilai pintasan-y bagi garis lurus AB.



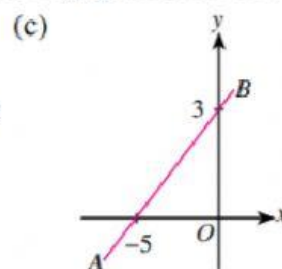
Pintasan - x =

Pintasan - y =



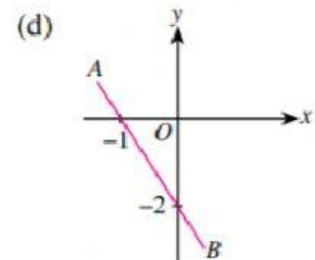
Pintasan - x =

Pintasan - y =



Pintasan - x =

Pintasan - y =



Pintasan - x =

Pintasan - y =