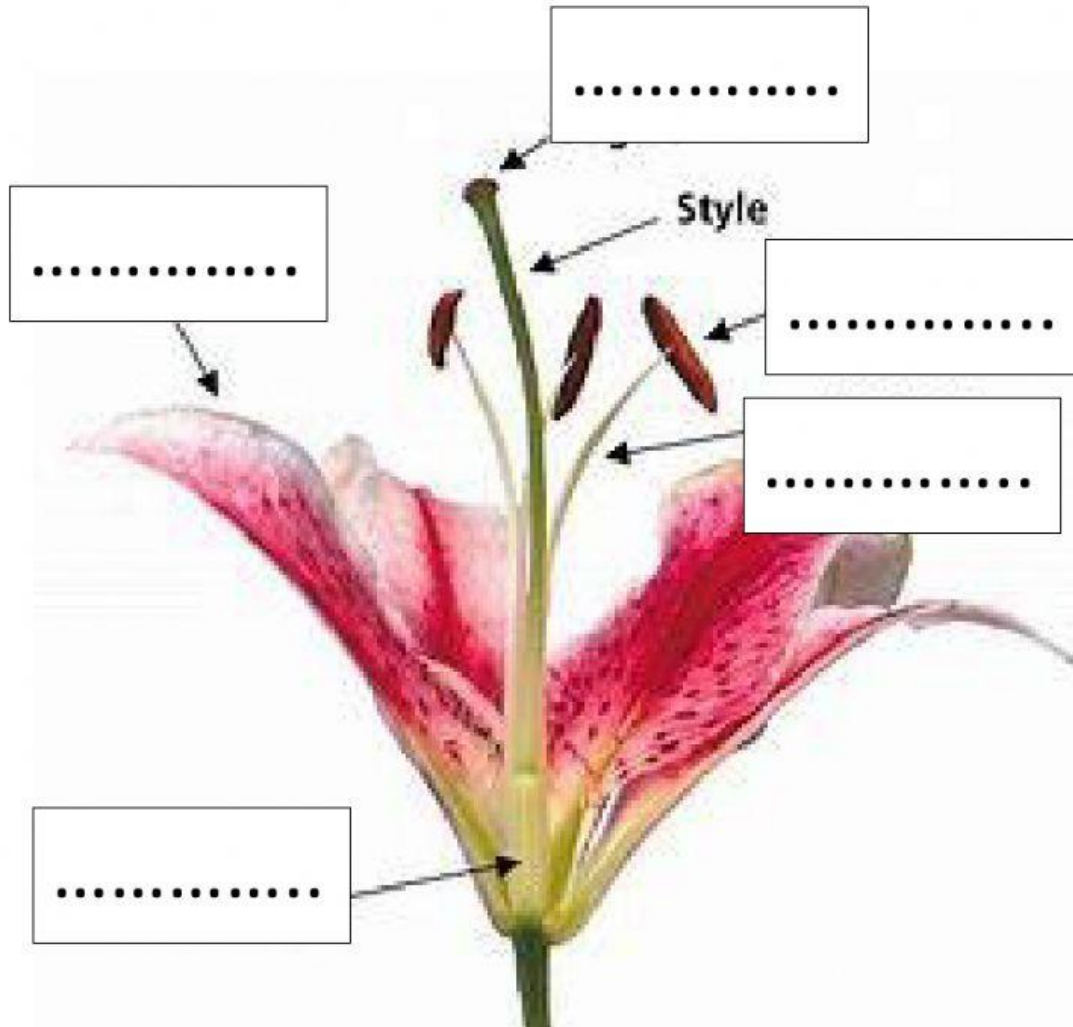


Your Name .....

Set correct part of the flower. Drag and place in blank place



petals

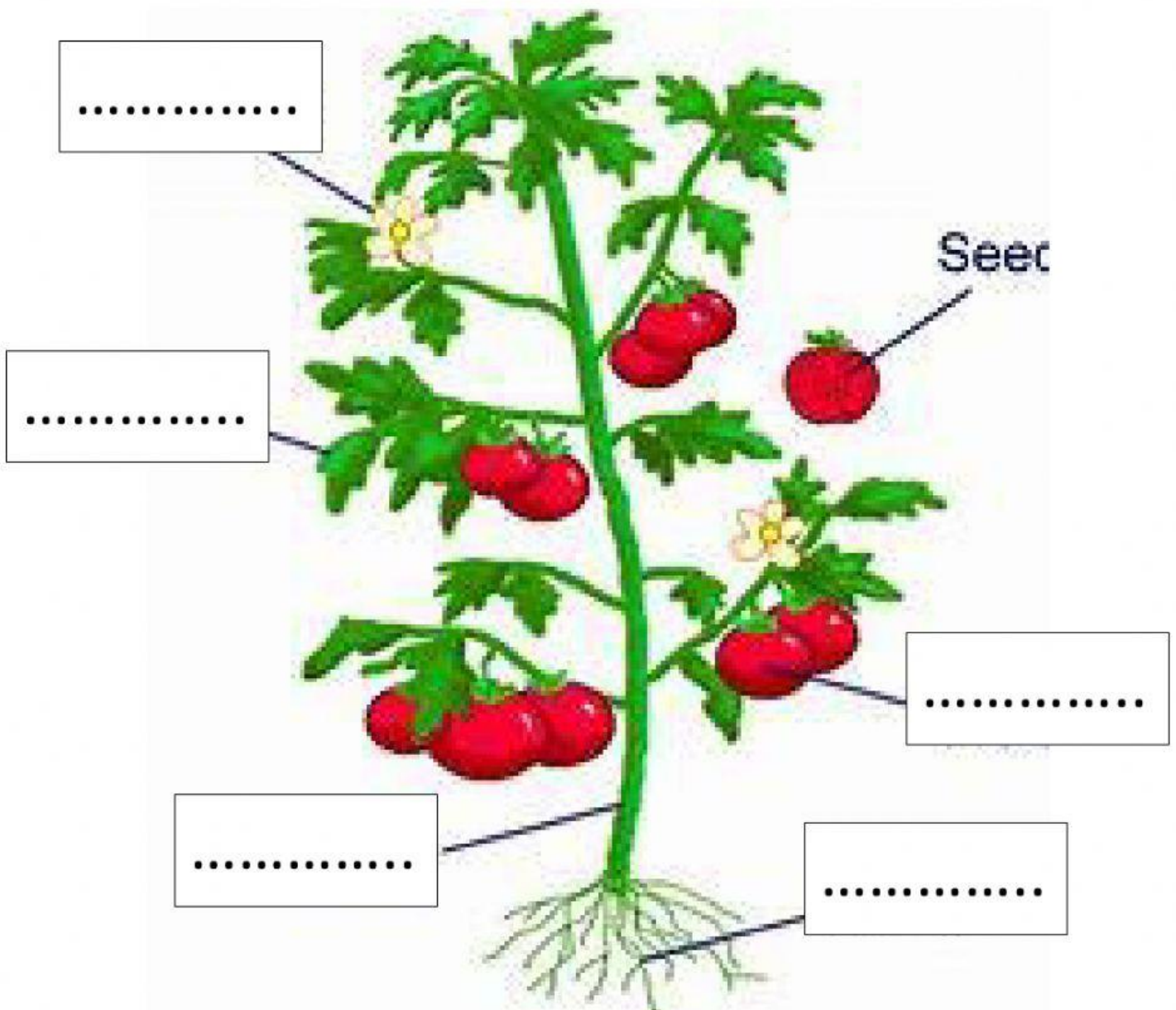
ovary

stigma

anther

stamen

Set correct part of the plan. Drag and place in blank place



flower

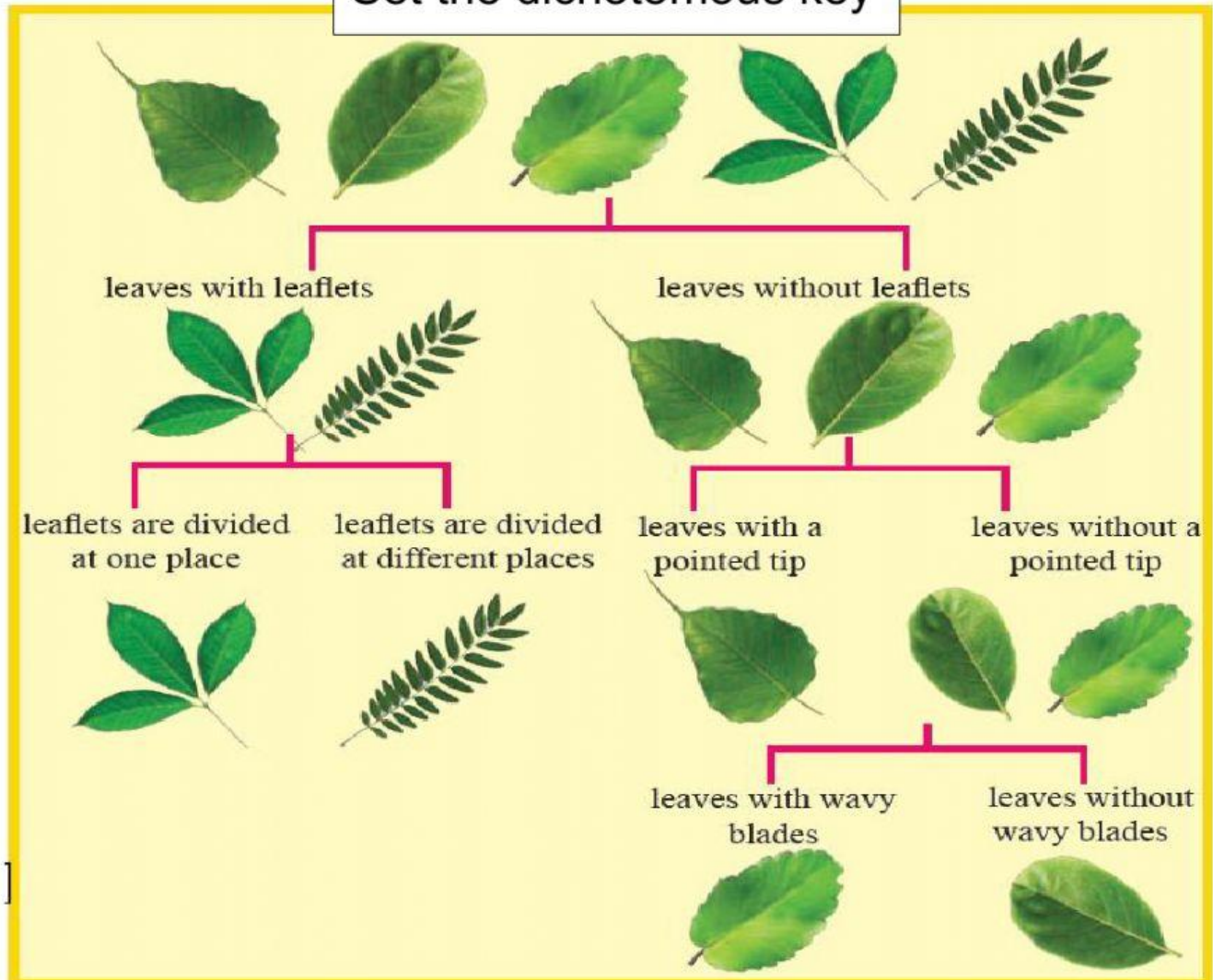
leaf

fruit

stem

root

Set the dichotomous key



leaves with leaflets

leaves without leaflets

leaflets are divided at one place

leaflets are divided at different places

leaves with a pointed tip

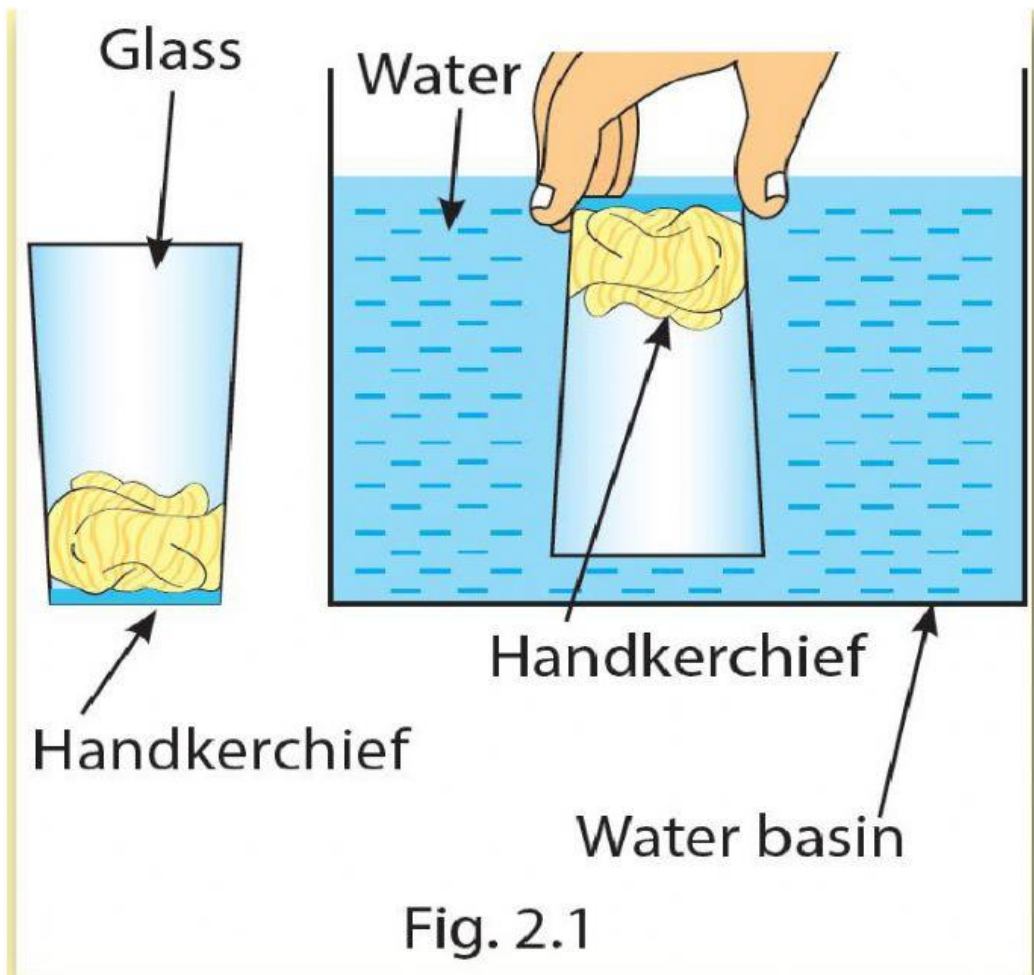
leaves without a pointed tip

leaves with wavy blades

leaves without wavy blades

Good Start – Grow Smart with Minasro College, වියන් පරපුරක ජන්ම භූමිය මිනැස් රෝ, ඔබේ එම වියන් පරපුරේ සාමාජිකයෙකි.

Observe the following setup



What is concluded by this experiment? Select..

The conclusion is that **air occupies space**.

The conclusion is that air has a mass.

You know that things without a mass and do not occupy space are known as energy.

What are the things around us can be divided into two main categories? Select...

as **matter** and **energy**.

As **Living things** and **Non-living things**

Match with Sinhala meaning

Matter  
Solid  
Gas  
Volume  
Hardness  
Ductility

සන

වායුව

ප්‍රධාන ඒක

තනතුරුව

පරිමාව

දෘඩ බව

Read the passage. Give the answers

## ▶▶ Water Pollution

There are some water bodies with different types of waste materials, bad smell and de-colourization. Addition of waste materials to water till it becomes unsuitable for consumption is known as water pollution. Even though there is only about 0.01% of water suitable for consumption, due to unawareness and carelessness of people, this limited amount of water is getting polluted.

How to define water pollution ?

What are the main reasons for water pollution ?

Send your answer sheet to Minasro College by touching on Finish



Good Start – Grow Smart with Minasro College, වියන් පරපුරක ජනිත භූමිය මිනැස්රෝ, ඔබේ එම වියන් පරපුරේ සාමාජිකයෙකි.