

<b>SUBJECT:</b>  <b>SCIENCE</b>	<b>GRADE:</b>	F	G	T	1	2	3	4	<b>DATE:</b>
		G							
		5	6	7	8	9	10	11	
<b>STUDENT:</b>		<b>TEACHER:</b> Mrs. Carol Ximena Bolaños P and Ms. Megan Markle							
<b>UNDERSTANDING GOAL:</b> The student will identify, understand and analyze the main characteristics of plants, understanding how plants reproduce and make new plants, will observe some ways that seeds are dispersed, will also observe the male and female parts of plants, and investigate what seeds need to grow, will recognize that flowering plants have a life cycle. The student will understand the importance of it in their lives all this with the purpose of understand that plants are living things that grow, and that they need soil, water and light in order to grow, besides developing a critical thinking to interpret phenomena that occur due the interaction of the plants on their environment through research laboratories, outdoor experiments with the purpose of students will be able to use this knowledge to make lab reports, academic guides, oral presentations, and the poster for final project of synthesis.									
FORMAL ASSESSMENT <input type="checkbox"/> NON FORMAL ASSESSMENT <input type="checkbox"/>									

1. Flowering plants have a life cycle.

Choose the correct stage for each picture.

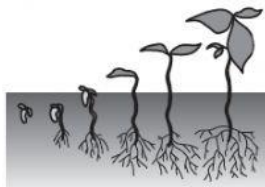
**Fertilization**

**Germination**

**Pollination**

**Seed dispersal**

**Seed production**



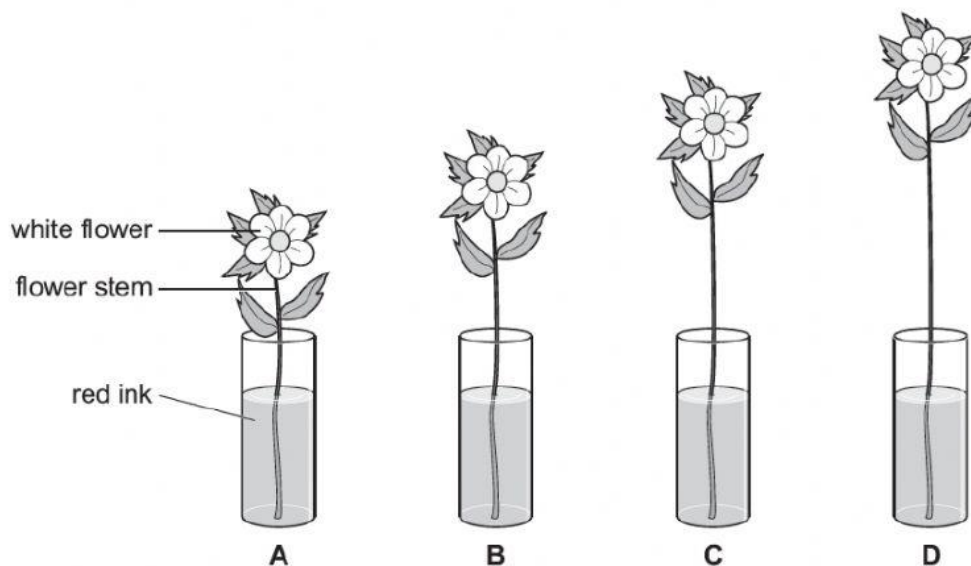


[3]

## 2. Yuri investigates water movement in flowers.

He has four different length flower stems.

He puts them into red ink (coloured water).



Here are Yuri's results.

flower	time for flower to turn red in minutes
A	20
B	30
C	40
D	

(a) Predict the result for flower D.

FT-GFE-08-V1

It takes \_\_\_\_\_ minutes for the flower to go red. [1]

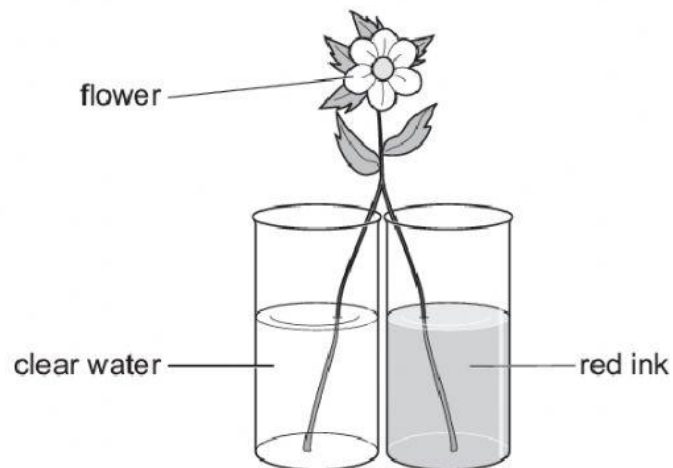
(b) What happens if Yuri uses blue ink?

\_\_\_\_\_ [1]

(c) Yuri carries out the investigation again.

He splits the stem in half.

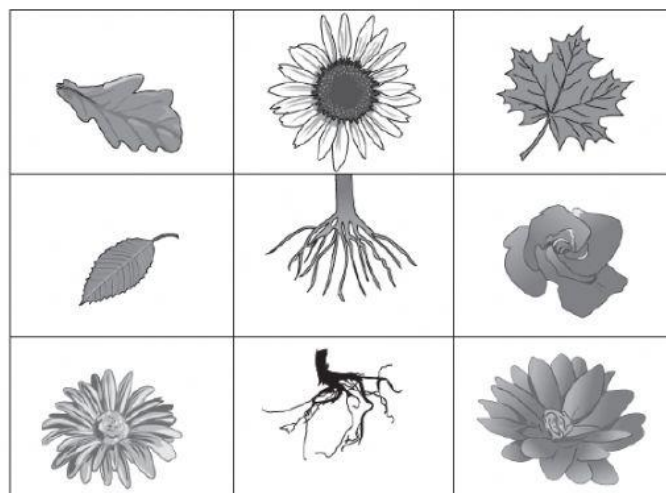
He puts half the stem in clear water and half the stem in red ink.



On the diagram above shade the part of the flower that turns red.

[1]

3. Look at the pictures of different plant parts.



(a) Circle the picture of one part that takes in water.

[1]

(b) Which part of a plant is normally at the bottom of the stem?

Circle the correct answer.

**Flower**

**leaf**

**petal**

**root**

[1]

4. Seeds have different methods of dispersal.

(a) Draw a line to match the method of dispersal to the correct seed.

**method of dispersal**

animal

wind

water

**seed**



coconut



sycamore seed



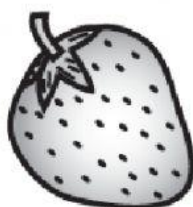
sticky burr

[2]

(b) Name one other method of seed dispersal.

[1]

(c) Here is a picture of a strawberry.



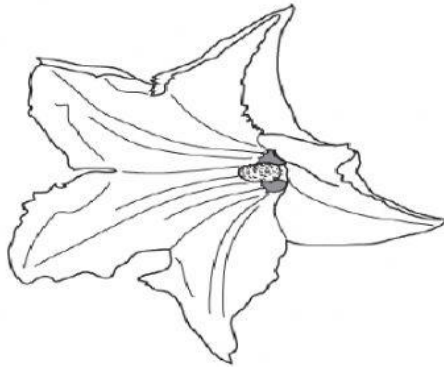
Describe how animals disperse the seeds of a strawberry

[1]

5. Zucchini plants have male flowers and female flowers.

(a) Male flowers only contain male parts.

Here is a male flower.



What parts are in the male flower?

Circle one correct answer.

anther and filament

anther and ovary

ovary and filament

stigma and ovule

stigma and style

[1]

(b) Part of the male flower fertilises the female flower.

Complete the sentence.

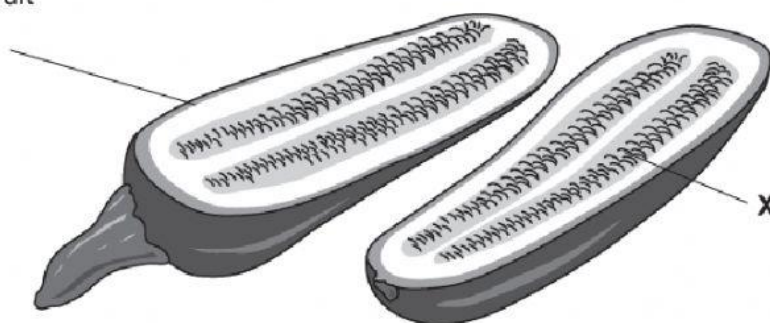
The ovum of the female flower is fertilised by the \_\_\_\_\_  
from the male flower.

[1]

(c) The male flower fertilises the female flower.

A zucchini fruit is made.

zucchini fruit  
cut in half



FT-GFE-08-V1

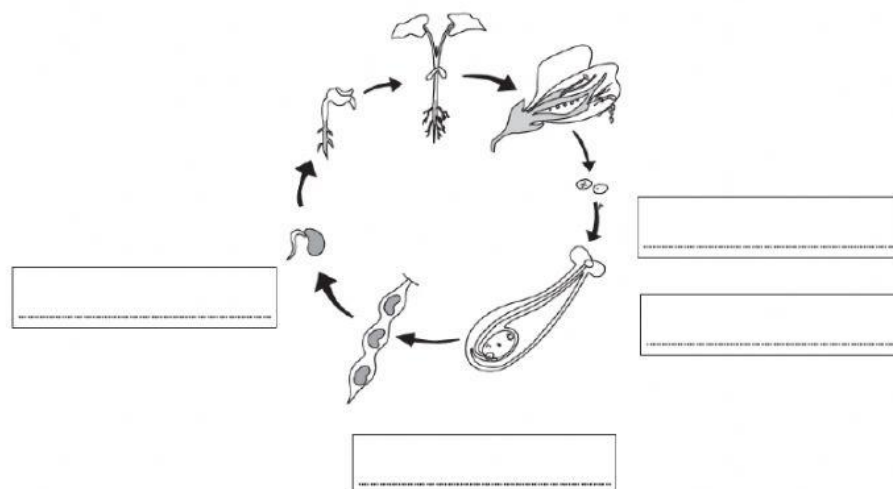
---

[1]

What is this called?

- germination
- growth
- reproduction
- seed dispersal
- seed production

The teacher draws a diagram.



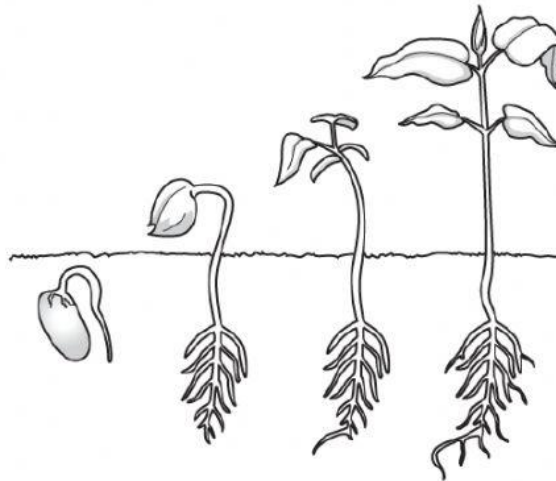


Complete the labels on the diagram.

Choose words from

**Fertilisation**                      **germination**                      **pollination**                      **seed production**                      [2]

8. Look at the diagram showing a plant growing.



(a) What happens to the roots when the plant grows?

\_\_\_\_\_ [1]

(b) What two things happen to the leaves when the plant grows?

1 \_\_\_\_\_

2 \_\_\_\_\_ [1]

(c) The stem grows long and straight.

Why is it important for the stem to grow when the plant grows?

\_\_\_\_\_  
\_\_\_\_\_ [1]

9. Flowers have male and female parts.

(a) What is the name of a female part?

Circle the correct answer.

**anther**

**ovary**

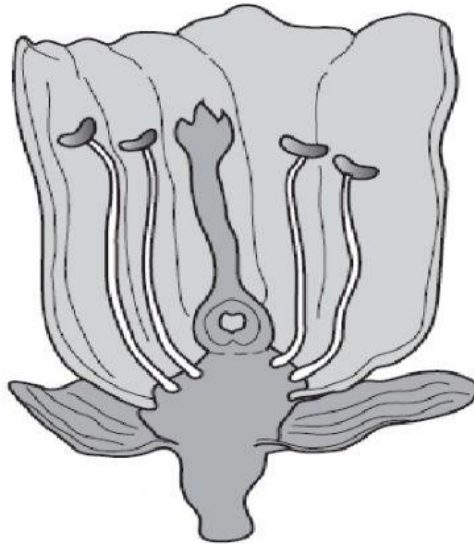
**petal**

**sepal**

**stamen**

[1]

(b) Put the letter **F** on the flower to label a **female** part.



(c) What is the name of a male part?

Circle the correct answer.

**Anther**

**nectary**

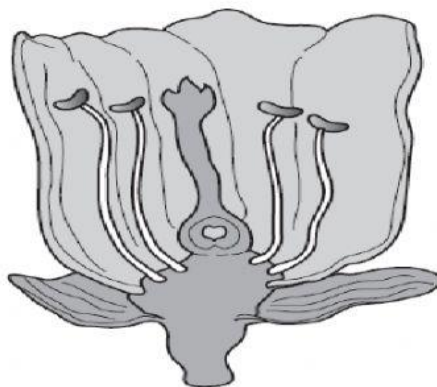
**ovary**

**petal**

**sepal**

[1]

(d) Put the letter **M** on the flower to label a **male** part.

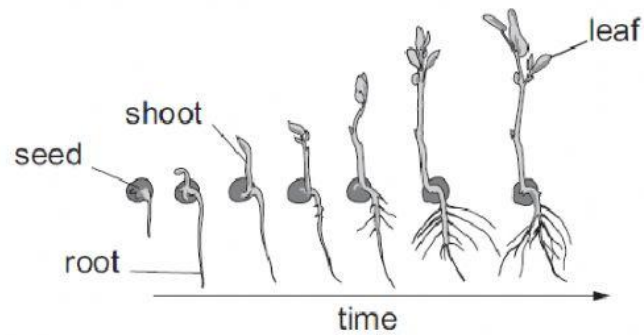


[1]



10. Chloe investigates seed germination.

She finds pictures on the internet to show germination.



(a) Use the Drawing to describe what happens to the seed.

\_\_\_\_\_  
\_\_\_\_\_ [3]

(b) Write down two things she can measure to show germination has happened.

1. \_\_\_\_\_  
2. \_\_\_\_\_ [2]

(c) What **two** conditions are needed for seeds to germinate?

\_\_\_\_\_  
\_\_\_\_\_ [1]

11. There are many different types of seed.

