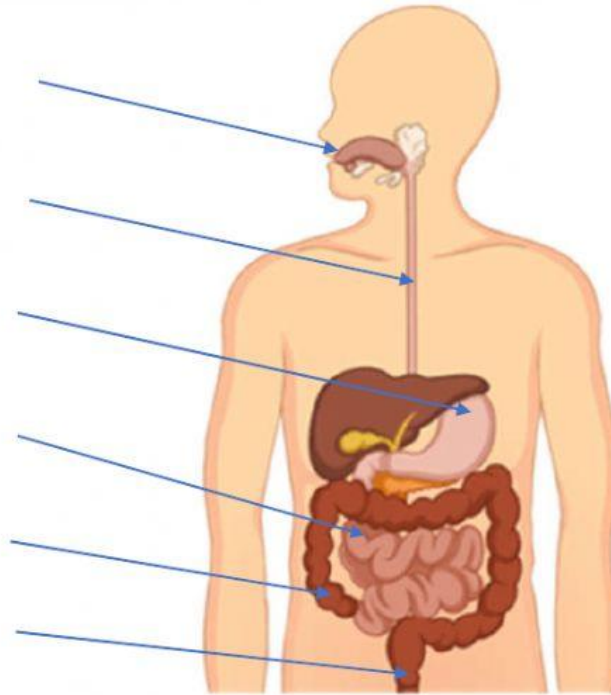


# DYGESTIVE SYSTEM

1. Drag the name to the correct place.



esophagus

large intestine

anus

stomach

small intestine

mouth

2. Match the words to the correct answer.

esophagus

It has teeth that break the food into small pieces.

large intestine

It is a long tube. Food goes down here to the stomach.

anus

It is like a bag. The food stays here for about three hours.

stomach

It is a very long thin tube. There are lots of blood vessels around the tube.

small intestine

What our body doesn't need goes out through it when we go to the toilet.

mouth

It is a wide tube. It connects to the anus.