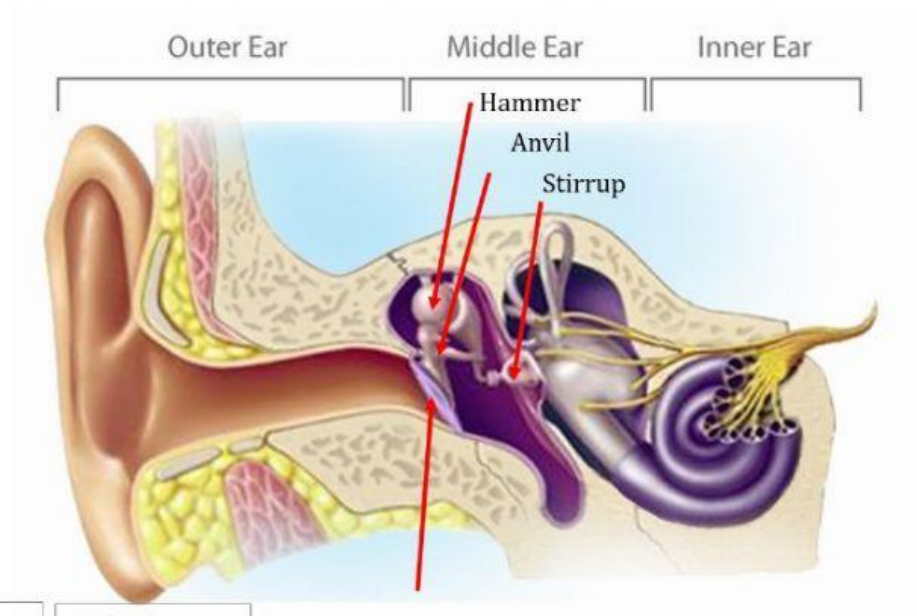


# SCIENCE WORKSHEET

NAME: \_\_\_\_\_ FOURTH " \_\_\_\_\_ "

- I. Drag the function to each of the parts of the ear.



## Cochlea

A snail-shaped organ filled with liquid, is the actual organ of hearing

## Eardrum

Separates the outer ear from the middle ear

## Auricle

Fleshy part that is clearly visible, there are no bones in it.

## Auditory Canal

Guides sound waves to the middle ear.

## Auditory nerve

It carries the message of sound to the brain.

## II. MATCH

Draw a line from the name of the part of the ear to its corresponding function:

### Auditory Canal

### Cochlea

### Middle ear

### Eardrum

### Auditory nerve

### Auricle

- Fleshy part that is clearly visible, there are no bones in it.
- Guides sound waves to the middle ear.
- Is made of three bones: Hammer, Anvil and Stirrup.
- A snail-shaped organ filled with liquid, is the actual organ of hearing
- It carries the message of sound to the brain.
- Separates the outer ear from the middle ear.