

Feel

(Robbie Williams)

Come and my hand
I wanna contact the
Not sure I understand
This I've been given
I sit and talk God
And just laughs at my plans
My head a language
I don't understand

I just wanna
Real feel the home that I live in
'Cause I got too much life
 through my veins
 to waste

I don't wanna die / day
But I ain't keen on living / live either
Before I fall on / in love
I'm preparing to leaving / leave her
Scare myself / yourself to death
That's why I keep on running / run
Before I've arrived
I can see myself coming / to come

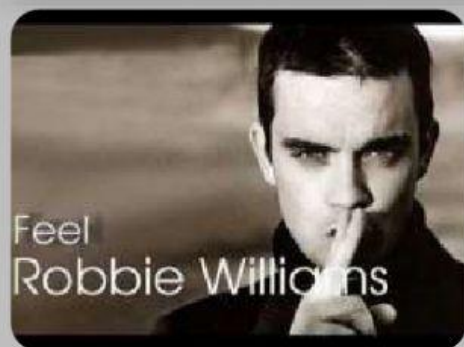
I just wanna feel
Real love feel the home / house that I live in
'Cause I got too much live / life
Running through my veins
Going to waste / waist



Drag & Drop

Speaks	Hold
Role	Living
Love	Running
He	To
Going	Feel

Listen & Choose

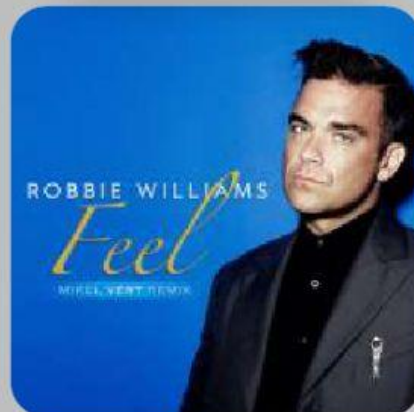


And I _____ to feel
Real love and the love _____
I _____ get enough

I just wanna feel
_____ love feel the home that I live in
I got too _____ love
Running _____ my veins
_____ to waste

I just wanna _____
Real love and the love ever after

Listen & Write



Listen & Join

There's a hole
You can see it
It's a real

big place
in my soul
in my face

Come and
I wanna contact
Not sure
This role

the living
hold my hand
I've been given
I understand

Not sure I understand
Not sure I understand
Not sure I understand
Not sure I understand



GERUNDS & INFINITIVES

- Write phrases from the song that contains gerunds and infinitives.

Gerunds	Infinitives