



Assumption College Ubonratchathani  
English for Science 2

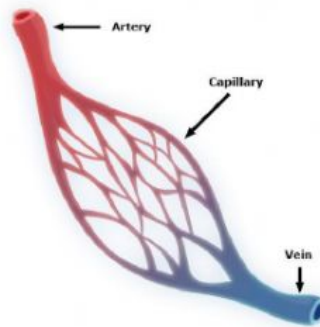
Name \_\_\_\_\_ Class \_\_\_\_\_ No \_\_\_\_\_

**Types of Blood Vessels (ชนิดของหลอดเลือด)**

**Arteries** (หลอดเลือดแดง)

**Veins** (หลอดเลือดดำ)

**Capillaries** (เส้นเลือดฝอย)



Choose the best answer.

1. What blood vessel with thick muscular wall and narrow lumen takes **Away** the blood from the heart? \_\_\_\_\_
2. The arteries have valves. \_\_\_\_\_
3. The largest artery is the \_\_\_\_\_.
4. The artery carries \_\_\_\_\_ blood to all the different parts of the body.
5. What blood vessel with thin muscular walls and large lumen takes blood **Towards** the heart? \_\_\_\_\_
6. Veins have valves to prevent back flow. \_\_\_\_\_
7. The largest vein is the \_\_\_\_\_.
8. The smallest blood vessel is \_\_\_\_\_. It has one cell thick walls and very small lumen.
9. Capillaries carry blood at \_\_\_\_\_ pressure.
10. The blood vessel where gases, nutrients and wastes are exchanged. \_\_\_\_\_
11. The walls of the capillaries are \_\_\_\_\_ to allow easy diffusion of gases, nutrients and wastes.

