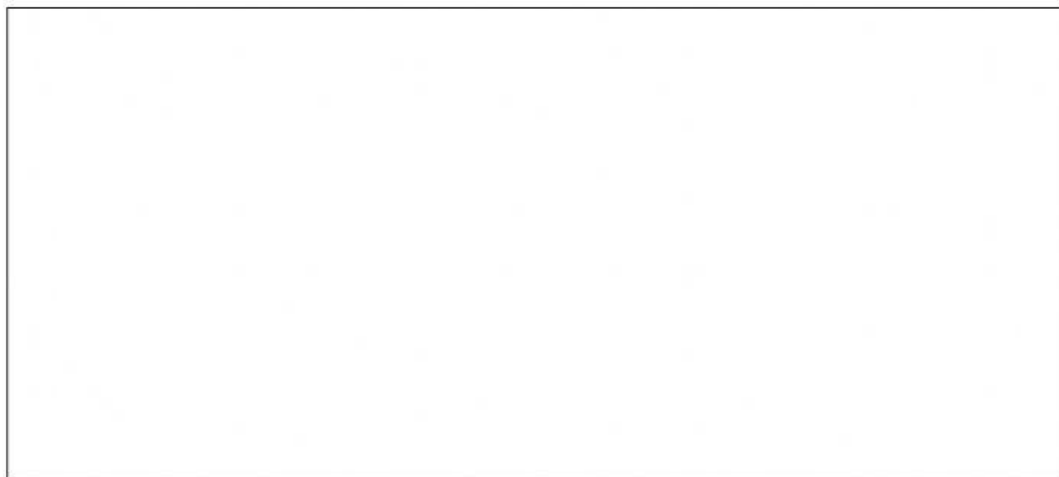


E. M CIDADE DA CRIANÇA

NOME: \_\_\_\_\_ TURMA: \_\_\_\_\_ DATA: \_\_\_/\_\_\_/\_\_\_

CLIQUE NO VÍDEO E PRESTE ATENÇÃO NA FAMÍLIA DA LETRA "X"



1- LIGUE O DESENHO AO SOM INICIAL OU FINAL CORRESPONDENTE E COMPLETE AS PALAVRAS

XA

XE

XI

XO

XU



CARA



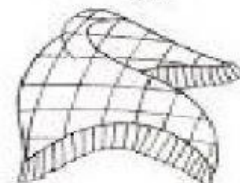
LI



XINHA

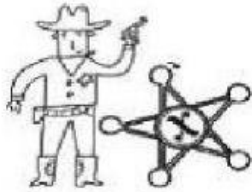
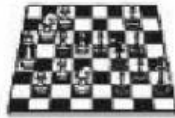


RIFE

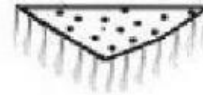


LE

## 2- VAMOS LIGAR



- . XILOFONE
- . XÍCARA
- . XADREZ
- . XAROPE
- . XAMPU
- . XÉROX
- . XIXI
- . XALE
- . XUXA
- . XERIFE



## 3- CAÇA-PALAVRAS

T	B	A	I	X	O	P	M	I	B
C	G	P	C	A	I	X	A	J	E
F	R	T	R	L	I	X	A	H	X
R	Q	L	F	E	I	X	E	G	I
Q	W	R	E	M	E	X	E	F	G
F	A	X	I	N	A	Q	R	T	A
M	L	X	O	Y	P	S	D	F	
T	P	C	O	X	A	G	L	K	H

**BAIXO, CAIXA,  
LIXA, FEIXE,  
REMEXE, FAXINA,  
LUXO, COXA,  
BEXIGA**