

1. Choose the correct preposition “In, On, Under, Next to” to fill in the blank.



The tree is _____ the sofa.



The dog is _____ the table.



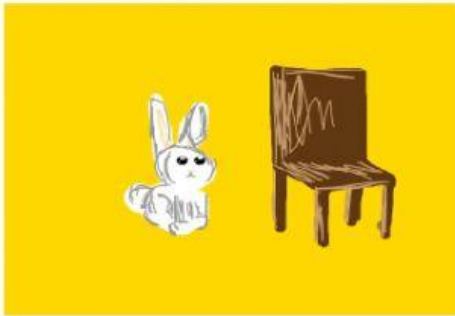
The cat is _____ the box.



The pens are _____ the pencil case.



The cat is _____ the sofa.



The rabbit is _____ the chair.



The lamp is _____ the sofa.



The books are _____ the table.



The dog is _____ the house.



The dog is _____ the car.



The cat is _____ the chair.



The birds are _____ the tree.