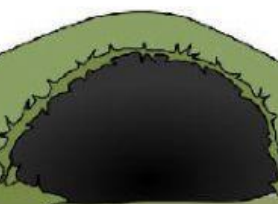
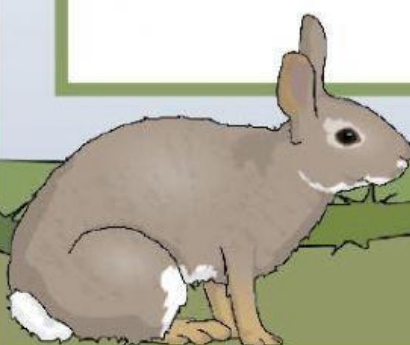




Alice's Adventures in Wonderland

Alice decided to follow the Rabbit because.....

- a) the Rabbit was very beautiful.
- b) the Rabbit was wearing a coat and carrying a watch.
- c) the Rabbit was late.





Alice fell into the Rabbit hole because....

- a) she was curious about where the Rabbit was going.
- b) she didn't pay attention where she was stepping on.
- c) she slipped and fell down.

What did Alice see while she was falling into the hole? _____

Why did the doorknob tell Alice that she was simply impassable?

- a) Because nothing was imposible.
- b) Because the doorknob could not let her in.
- c) Because she was too big to go through the door.

