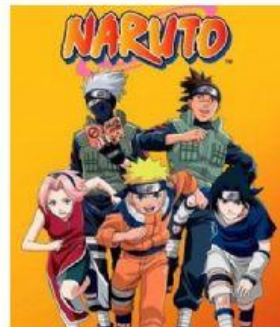
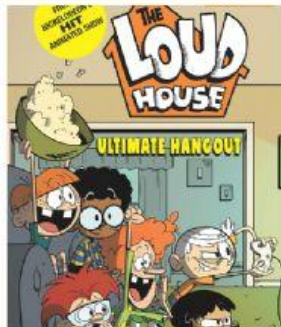


SERIES CHARACTERS EXPLORE COMMUNITY COMMENTS GAMES +

SERIES

EDIT 

SHARE 





KALLY'S MASHUP

[SERIES](#) [CHARACTERS](#) [EXPLORE](#) [COMMUNITY](#) [COMMENTS](#) [GAMES](#) [+](#)

KALLY

[EDIT](#)
[SHARE](#)

HER NAME IS KALLY PONCE. SHE IS 13 YEARS OLD.
 SHE IS FROM VILLA ESMERALDA VERDE.
 SHE HAS GOT SHORT BROWN HAIR AND BLUE EYES.
 SHE IS OLD. SHE IS FAT AND SHORT.
 KALLY LIKES MUSIC. SHE CAN'T PLAY THE PIANO
 AND SING.
 SHE IS VERY SILLY AND SOCIABLE.



LIVEWORKSHEETS

KALLY'S MASHUP

SERIES CHARACTERS EXPLORE COMMUNITY COMMENTS GAMES +

KALLY'S MASHUP

EDIT 

SHARE 

DESCRIBING KALLY

IS KALLY NAME



START

Drag and drop words to rearrange each sentence into its correct order.

PLAY 

KALLY QUIZ



START

A multiple choice quiz with time pressure, lifelines and a bonus round.

PLAY 



 LIVEWORKSHEETS

NARUTO

[SERIES](#) [CHARACTERS](#) [EXPLORE](#) [COMMUNITY](#) [COMMENTS](#) [GAMES](#) [+](#)

NARUTO

[EDIT](#)
[SHARE](#)

HIS NAME AM NARUTO UZUMAKI. HE IS A NINJA.
 HE IS FROM KONOHA GAKURE.
 HE HAS GOT BLONDE HAIR AND BROWN EYES.
 HE IS YOUNG. HE IS WEAK AND THIN.
 NARUTO DOESN'T LIKE RAMEN. HE CAN'T RUN
 AND FIGHT.
 HE IS VERY LAZY AND SOCIABLE.
 HIS BEST FRIENDS ARE SASUKE AND SHIKAMARU.




NARUTO

[SERIES](#) [CHARACTERS](#) [EXPLORE](#) [COMMUNITY](#) [COMMENTS](#) [GAMES](#) [+](#)

NARUTO

[EDIT](#)
[SHARE](#)

DESCRIBING NARUTO

NARUTO IS  NAME

START

Drag and drop words to rearrange each sentence into its correct order.

PLAY 

NARUTO QUIZ

The Worded Quiz Show

START

A multiple choice quiz with time pressure, lifelines and a bonus round.

PLAY 



 **LIVEWORKSHEETS**