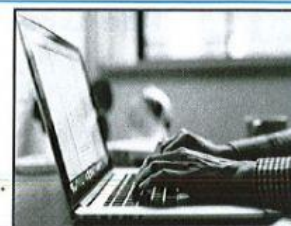


PART 5 Questions 21-26

For each question, choose the correct answer.

The changing Internet

The internet may have started in the 1960s, but it wasn't until the 1990s when it became (21)..... to the public. In 1994, the Stanford Federal Credit Union was the first bank in the world to (22)..... online internet banking.



By 1995, people around the world were starting to have internet in their homes. Internet in those days was very slow because they had to use a dial-up (23)..... . The computer needed to use a telephone line and sent noisy (24)..... like a fax machine does. One of the problems was that if you were using the internet, you couldn't make or (25)..... phone calls.

Over the years, the internet became faster and faster as there was no need to use the telephone line for the internet. Today, the Internet is more complex than ever. It (26)..... computers, satellites, mobile devices and other gadgets in a network millions of times bigger than the original one.

- | | | | |
|-------------------|-------------|--------------|--------------|
| 21. A. effective | B. accurate | C. available | D. realistic |
| 22. A. allow | B. afford | C. deliver | D. offer |
| 23. A. connection | B. contact | C. mobile | D. link |
| 24. A. signs | B. signals | C. alarms | D. rings |
| 25. A. finish | B. welcome | C. receive | D. buy |
| 26. A. creates | B. adds | C. separates | D. connects |

PART 6 Questions 27-32

For each question, write the correct answer. Write ONE word for each gap.

Emergency Services

There are many types of emergency services, but the three main (27)..... are the police, fire and ambulance. If you need any of these services in the United Kingdom, you (28)..... to dial 999 and tell the operator what service you want. The operator will then put you through to the control room for that service. All the emergency services operate 24 (29)..... a day, 7 days a week.



Whatever service you request, their aim is to get to the scene of the emergency within 8 minutes. Sometimes this is (30)..... possible especially if the situation is in the middle of the countryside, far from the city. (31)..... emergency service has their own special vehicles with all the equipment they need. They are all trained to drive at very fast speeds very safely. This includes driving (32)..... red lights.