

BRIDGE COURSE DIGITAL LESSONS

TOPIC: Cell, Tissues-Structure and Functions
L3(10th class) Biology Animal Tissue Worksheet-3

Student Name:

School Name:

Activity-1: Drag and Drop the Characters of the Muscle tissues

Sl.No	Striated muscles Characters	Non-striated muscles Characters	Cardiac muscles Characters
1			
2			
3			
4			

Hints: Voluntary Muscles. The muscles show alternate light/dark bands/striation.

Involuntary Muscles. Striations/bands are Absent. Resembles striated muscle.

Involuntary Muscles. Cells are long, Cylindrical, Unbranched and having many nuclei in the body.

They are present in limbs. They are present in heart. They are present in alimentary canal and blood vessels.

The cells are long with pointed cells and having a single nucleus. Cells are long branched and have nuclei.

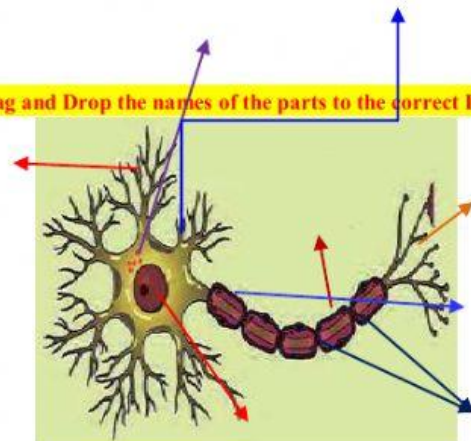
Improve Your Learning:

1. Tissue that cover and protect the body in animals is?
2. The cells which help in repair of the tissues when they are injured are?
3. The Connective tissue that connects muscle to the bone?
4. The substance which prevents clotting of blood in blood vessels?
5. The cells which do not have Regeneration capacity?

7. Join with arrows: match the following

- | | |
|-------------------|------------------------------|
| A. Blood tissues | Found in Trachea |
| B. Nervous tissue | Stores Fat |
| C. Adipose tissue | Connects bones at joints |
| D. Ligament | Receive and Conduct impulses |
| E. Cartilage | Transport of materials |

6. Drag and Drop the names of the parts to the correct Location



Nissl's granules Dendrites Cyton (Cell body) Nerve terminals

Nucleus Myelin sheath Axon Nodes of Ranvier

Prepared By: Dusa.Santhosh, Zphs Hanmajipet, Vemulawada, Rajanna Sircilla 9441731723.