



DAV HIGH SCHOOL, NAGARJUNASAGAR

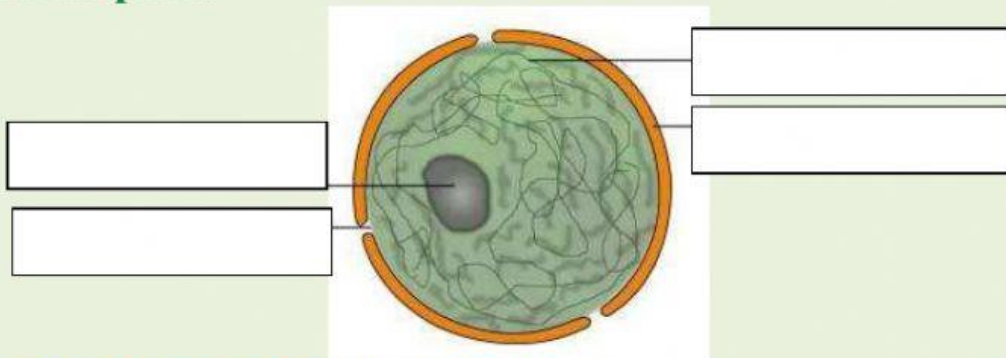


CLASS: 9

SUB: BIOLOGY

1. _____ controls exchange of substances between the cell and its external environment.
2. In a plant cell the extra layer outside the cell membrane is known as the _____.

Label the parts:

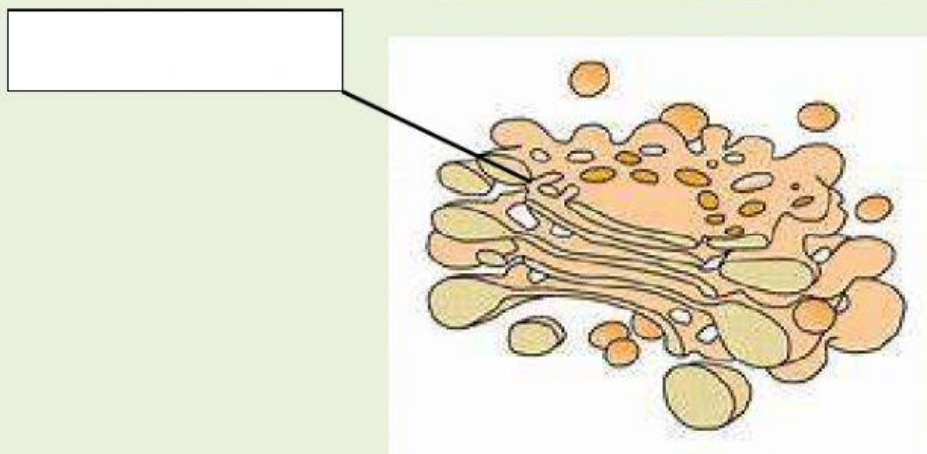
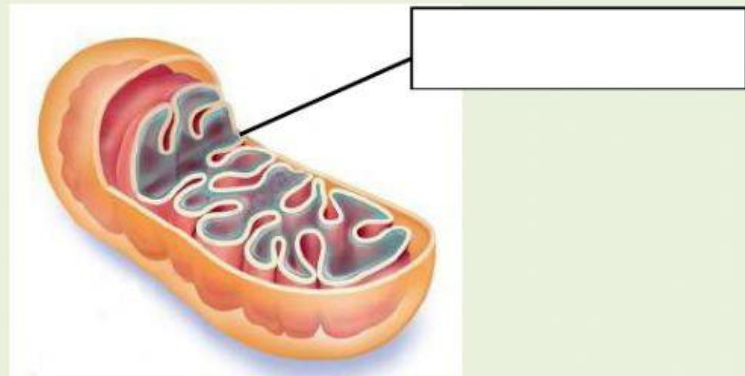
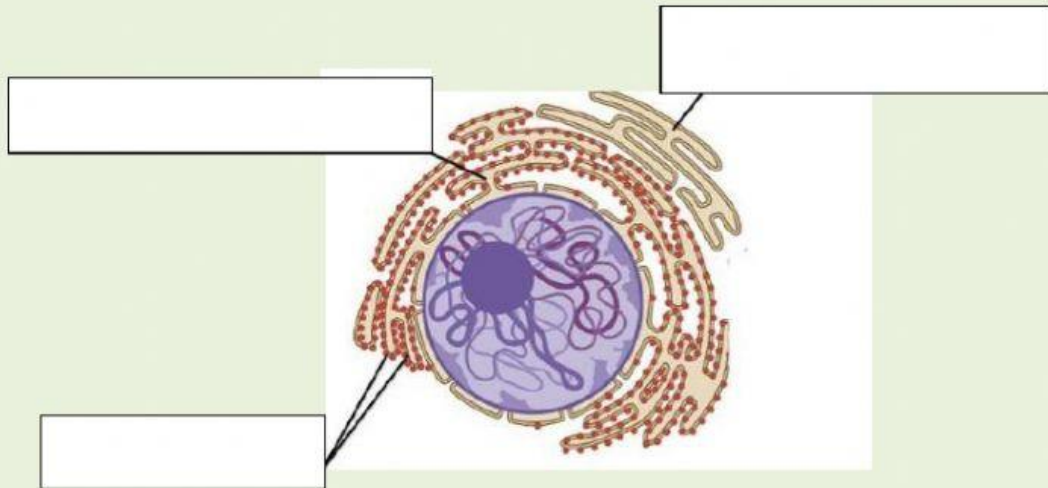


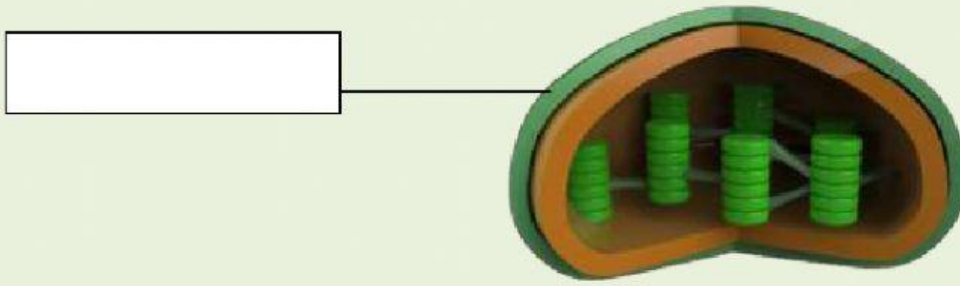
3. A cell with organized nucleus is called _____ cell and cell without an organized nucleus is called _____ cell.
4. _____ is called control center of cell and is involved in cell division.
5. Stain used to observe the human cheek cell is _____ stain.
6. _____ encloses the cytoplasm and protects it from the external environment.
7. Bacteria and blue green algae are examples of _____ type of cell.
8. When an animal cell is put in water, it swells and _____.
9. The fluid content of the cell which is bounded by cell membrane is called _____.

10. Cell organelles like mitochondria, golgi body, endoplasmic reticulum are present in _____ cell.

11. Centrioles are present in _____ cell.

Identify the cell organelles:





Identify the prokaryotic and eukaryotic cells among the following:

