


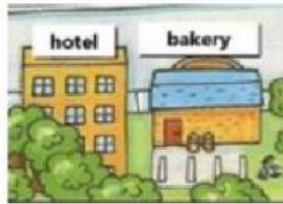
English Test: Unit "The City" 6th Grade

NAME: _____

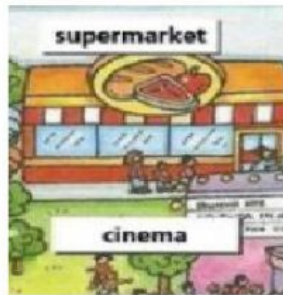
1.- Look at the pictures and choose the correct alternative: (8 Pts)

| | | | |
|---|--------------|--|-------------|
|  | FIRE STATION |  | RESTAURANT |
| | PARK | | SUPERMARKET |
| | HOSPITAL | | MUSEUM |
|  | BUS STOP |  | MUSEUM |
| | BANK | | SCHOOL |
| | POST OFFICE | | BANK |
|  | HOSPITAL |  | HOSPITAL |
| | BAKERY | | THEATRE |
| | POST OFFICE | | SCHOOL |
|  | SUPERMARKET |  | BANK |
| | BAKERY | | MUSEUM |
| | RESTAURANT | | RESTAURANT |

2.- Put the words in the correct order to make sentences: (12 pts)



| | | | |
|---------|------------|----|-----------|
| NEXT TO | THE BAKERY | IS | THE HOTEL |
| | | | |

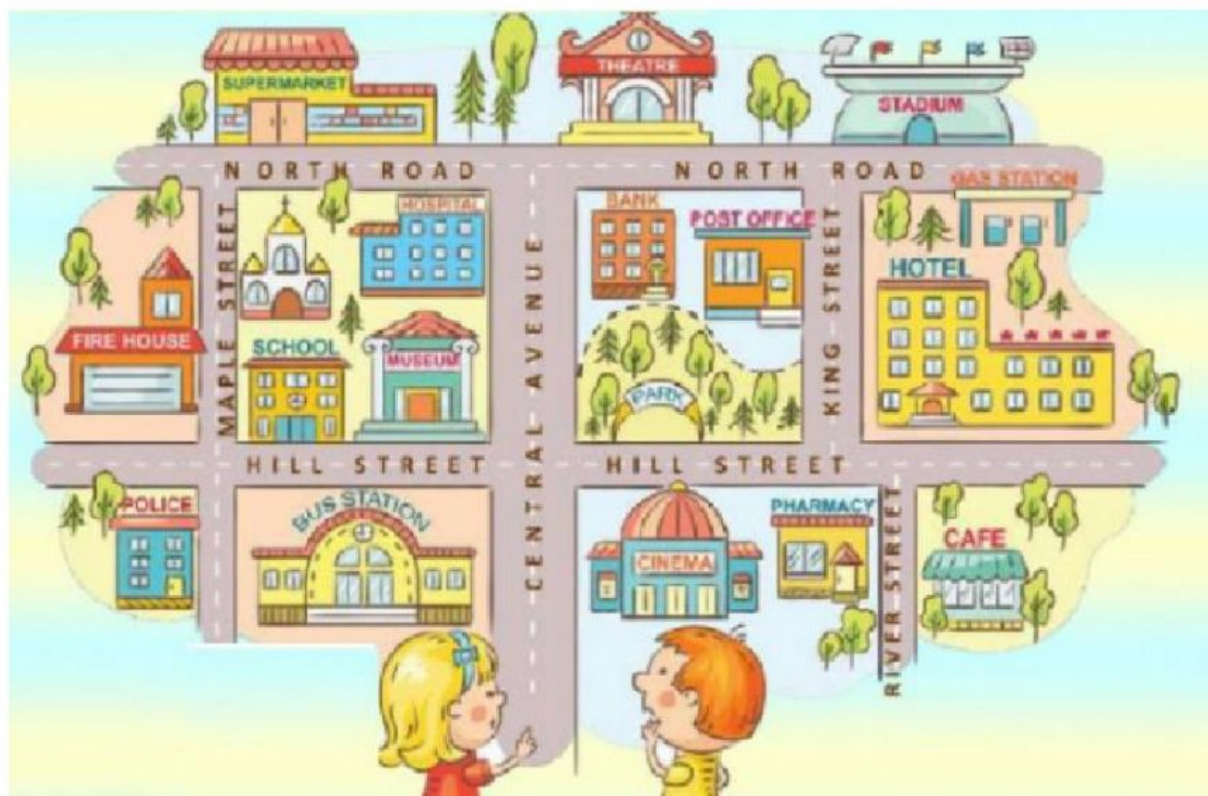


| | | | |
|----|-----------------|------------|--------|
| IS | THE SUPERMARKET | THE CINEMA | BEHIND |
| | | | |



| | | | |
|--------------|----------|----|----------|
| THE HOSPITAL | OPPOSITE | IS | THE PARK |
| | | | |

3.- Look at the map and answer True or False: (6 pts)



- | | | |
|---|------|-------|
| 1.- The museum is next to the school. | TRUE | FALSE |
| 2.- The hospital is behind the museum. | TRUE | FALSE |
| 3.- The theatre is opposite the stadium. | TRUE | FALSE |
| 4.- The gas station is behind the hotel. | TRUE | FALSE |
| 5.- The supermarket is next to the fire house | TRUE | FALSE |
| 6.- The park is between the café and the cinema | TRUE | FALSE |

4.- Choose the correct answer: (6 pts)

a) Where is the cinema?



A

It's next to the school.

B

It's between the shop and the swimming pool.

b) Where is the school?




A

It's between the shop and the swimming pool.

B

It's between the bus stop and the playground.

c) Where is the swimming pool?



A

It's behind the school.

B

It's next to the cinema.