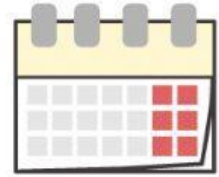


DAYS OF THE WEEK/SCHOOL SUBJECTS

Part 1- Complete the sentences with the days of the week

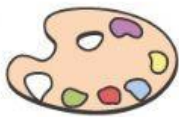


1. _____ is before Thursday.
2. _____ is after Saturday.
3. What day comes before Friday? _____
4. _____ is the first day of the week.
5. What day comes after Monday? _____
6. What day comes between Thursday and Saturday? _____
7. _____ is before Sunday.
8. What day is three days after Sunday? _____

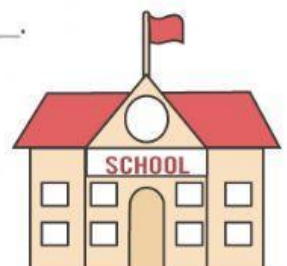


Part 2- Look at John's timetable and answer the questions

	Monday	Tuesday	Wednesday	Thursday	Friday
9:00 - 10:00	English	geography	literature	music	art
10:00 - 11:00	math	French	music	science	math
11:30 - 12:30	history	PE	informatics	literature	German



- 9- When is geography? _____.
- 10- When is science? _____.
- 11- When is John's French lesson? _____.
- 12- When is John's history lesson? _____.
- 13- When is German? _____.
- 14- What time is music on Wednesday? _____.
- 15- What time is art on Friday? _____.



YesES0inglès