

Part 1

Question 1 – 8

Read the text carefully in each question. Choose the best answer and mark **A**, **B**, or **C** on your answer sheet.

MELAKA, Monday : About 100 passengers on an express bus to Ipoh had a **narrow escape** when their bus hit a divider along the highway. This happened early this morning at 6.45 a.m. Fortunately, nobody was hurt.

1 The phrase **narrow escape** tells us that _____

- A some passengers fell off the bus
- B the passengers were nearly killed
- C some passengers had slight injuries

How to prepare fried chicken:

Cut chicken into medium-sized pieces. Marinate chicken with seasoning for 20–30 minutes.



Heat oil and fry ginger and garlic until fragrant.
Add chicken and fry until just cooked.
Add gravy and bring dish to a boil.

2 The above information is given in a _____

- A menu
- B recipe
- C manual

The best start to having good health is a nutritious breakfast. It provides energy and nutrients that we might overlook in other meals later on in the day. Eating breakfast helps promote good health besides helping us to be more alert for the day ahead. Skipping breakfast causes hunger and leads to problems of concentration.

3 What does the text stress on?

- A What to eat for breakfast.
- B The importance of breakfast.
- C The dangers of skipping breakfast.

Dear Miss Lim,

Thank you for your guidance and advice. It has made all the difference.

Joanne
(Form 3A)

4 The card shows the sender's _____

- A respect
- B dedication
- C appreciation

Newgate Ria

One day sale only, 20/9/20

Up to 80% discount*

For Newgate Ria card members,
additional 10% discount

Don't miss this **GOLDEN OPPORTUNITY!**

*for selected items only


5 It is clear that the sale is for _____

- A all customers
- B Newgate card members only
- C the entire month of September

PUTERI GUNUNG LEDANG



Starring: Anita K
M Rahman
J Razali

 General Viewing for All Ages

- 6 If the above rating is given for a movie it means that _____.
- A everyone can watch this movie
 - B only adults can watch this movie
 - C only children can watch this movie

FLOOD CAUSES RM3M LOSS

KELANTAN, Tuesday — The monsoon season strikes Kelantan again causing flood in high density areas.

- 7 The newspaper headline tells us the _____.
- A areas flooded
 - B effect of the flood
 - C number of lives lost

MANDY'S RESTAURANT

Truly a safari-styled outlet with a large menu of delicious Western dishes.

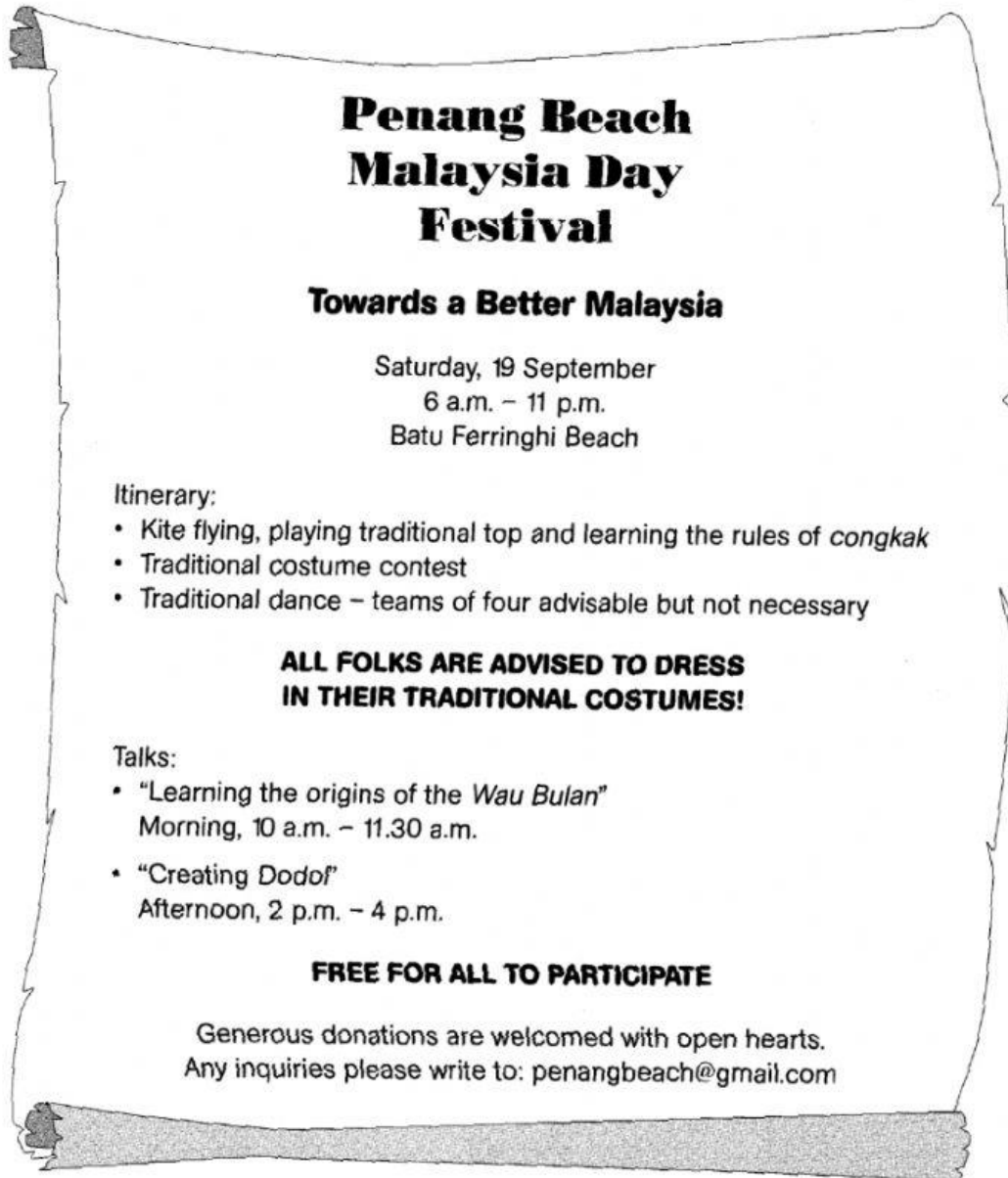
Opening hours:
12 p.m. to 3 p.m. and 6 p.m to 10 p.m.

- 8 The advertisement above claims the restaurant offers _____.
- A good services
 - B Chinese dishes
 - C Western dishes

[8 marks]

Question 9 – 18

Read the poster below and answer the questions. Choose **no more than five words and/or a number** from the text for each answer. Write your answer in the space provided.



Choose **no more than five words and/or a number** from the text for each answer. Write your answer in the space provided

9. The event will be held in _____ [1 mark]
10. The participants are encouraged to dress in _____ [1 mark]
11. For those who need answers to any question they should _____ [1 mark]
12. The event is held on _____ [1 mark]
13. The itinerary include _____ and learning the rules of *congkak*. [1 mark]
14. The event will last from _____ [1 mark]
15. A talk entitled _____ will be in the afternoon. [1 mark]
16. The entry fee is _____ [1 mark]

Questions 33 – 34

Complete the table below with **a word** from the text.

For each question, write your answer in the space provided on your answer sheet.

Meaning	Word	
17. lavish		[1 mark]
18. asking information		[1 mark]

[10 marks]