

# Language in Practice

SERENDIPITY

ENGLISH, THE MOST FORTUNATE  
DISCOVERY

OPPORTUNITIES  
English!

## Social English

In a clothes shop

Choose the words.



# Language in Practice

Complete the missing words in the dialogue.

- A Can I <sup>1</sup>h\_\_ you?  
B Yes. What <sup>2</sup>s\_\_\_\_\_ is this T-shirt?  
A It's a medium. What size do you need?  
B I need a <sup>3</sup>l\_\_\_\_\_.  
A Here you <sup>4</sup>a\_\_\_\_\_.  
B Thanks. Where can I try it on?  
A The <sup>5</sup>c\_\_\_\_\_ rooms are over there.  
B <sup>6</sup>Th\_\_\_\_\_ you.  
A How is it?  
B It's fine. How <sup>7</sup>m\_\_\_\_\_ is it?  
A It's £15.99.

Match the words to make Social English Phrases.

**It's so**

**Right**

**Don't**

**Wait**

**I have to**

**Have**

**What's**

**No**

**way!**

**wrong?**

**be silly!**

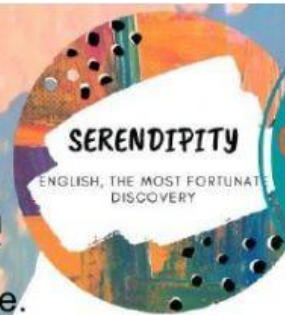
**cool!**

**fun!**

**now.**

**go.**

**a minute.**



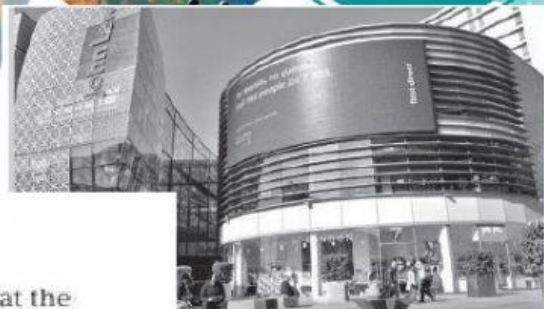
**OPPORTUNITIES  
English!**

# Language in Practice

SERENDIPITY

ENGLISH, THE MOST FORTUNATE  
DISCOVERY

OPPORTUNITIES  
English!



## Shopping in the UK

One of the best places to shop in the UK these days is at the Westfield Stratford City shopping centre in London – the biggest and newest of its kind in Europe.

**1** Customers at Westfield can buy fashion, food, home, and beauty products from more than 300 different stores. There are two **huge** department stores and a large supermarket. It has a 14-**screen** cinema and a bowling alley, and there are also two hotels and a casino.

**2** Inside the shopping centre, there are 72 different restaurants and food bars. There are takeaways and sit-down restaurants, including Halal and vegetarian **cake shops** and salad bars. Many of the bars and restaurants stay open after the shops close.

**3** Most of the stores in the shopping centre open from 10 a.m. to 9 p.m. during the week, and from 9 a.m. to 9 p.m. on Saturday. The opening hours on Sunday are from 11 a.m. to 5 p.m. The restaurants close at around midnight and the cinema closes at 1 a.m., **except** on Saturdays when it closes at 2 a.m.

**4** Westfield has 5,000 parking spaces and it is very easy to get to on public transport. Two **underground** lines connect the shopping centre to Central London, and there are many buses. Westfield is only eight minutes from Liverpool Street station by train.

Read the article. Match the questions A-D to paragraphs 1-4.

- A. What can you do there? ☐
- B. How do you get there? ☐
- C. Where can you eat? ☐
- D. What time does it open? ☐