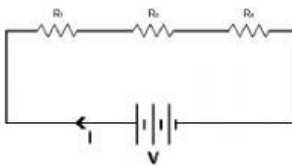


Choose the correct answer for the following by tapping on the correct answer and then click finish to know your score.

1. Identify this symbol



- a) A cell
 - b) A resistor
 - c) Variable resistor
 - d) Battery
2. The presence of _____ in a substance makes it a conductor
- a) free neutrons
 - b) free electrons
 - c) free protons
 - d) none of the above
3. The lightning which we see in the sky during rainy season involves _____
- a) current electricity
 - b) Static electricity
 - c) both the above options are correct
 - d) both the above options are incorrect
4. Which of the following statements correctly defines a volt?
- a) a volt is a joule per ampere
 - b) a volt is a joule per coulomb
 - c) a volt is a joule per second
 - d) a volt is a coulomb per second
5. Ammeter is always connected in _____ with the electrical components
- a) series
 - b) parallel
 - c) can be connected either in series or parallel
 - d) cannot be connected either in series or parallel
6. How are the resistors connected in this figure

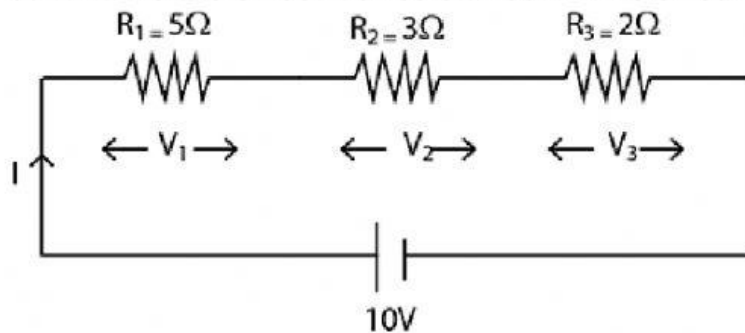


- a) R1, R2 parallel and R3 in series
- b) R1, R2, R3 in parallel

c) R_1, R_2 series and R_3 parallel

d) R_1, R_2, R_3 in series

7. What is the effective resistance in this circuit?



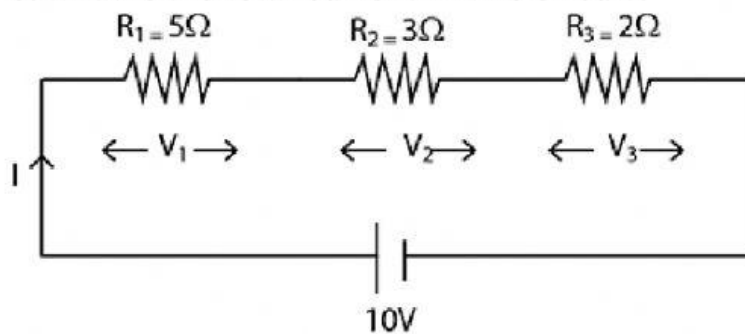
a) 5 ohm

b) 2 ohm

c) 3 ohm

d) 10 ohm

8. what is the total current in this circuit?



a) 1 Ampere

b) 10 Ampere

c) 100 Ampere

d) 5 Ampere

9. How does a fuse connected in the electrical circuit?

a) series

b) parallel

c) can connect both in series and parallel

d) any of the above

10. Which instrument has high resistance?

Ammeter or Voltmeter

a) Ammeter

b) Voltmeter

c) Both Ammeter and voltmeter

d) None

11. What is the unit of resistivity?

- a) ohm
 - b) ohm-metre
 - c) ampere
 - d) coulomb
12. How are the resistors connected in the circuit?

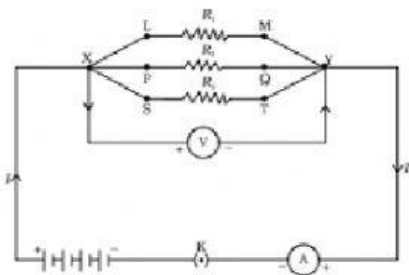


Figure 5

- a) two are in series and one in parallel
 - b) all the three in parallel
 - c) one in series and other two in parallel
 - d) in series
13. what are the electrical components you can find in this circuit?

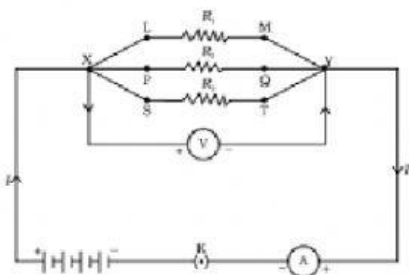


Figure 5

- a) voltmeter and ammeter
 - b) 3 resistors
 - c) switch, key and connecting wires
 - d) all of the above
14. Are the lights in your house wired in series or parallel?
- a) some in series and some in parallel
 - b) all in series
 - c) all in parallel
 - d) none of the above
15. Which metal is used for making the filaments of electric bulb?
- a) Tungsten
 - b) Nichrome
 - c) Copper

- d) Constantan
16. Electric Iron works on _____ effect of electric current.
- a) heating effect
 - b) chemical effect
 - c) magnetic effect
 - d) none of the above
17. What happens to the resistance of the conductor when it is made thicker?
- a) increases
 - b) decreases
 - c) remains the same
 - d) none of the above
18. Which has more resistance?
- a long piece of nichrome wire or short one
- a) long piece
 - b) short piece
 - c) both
 - d) none
19. Resistance of the conductor increases as its length is _____
- a) doubled
 - b) tripled
 - c) increases
 - d) all the above
20. What is the ratio of potential difference and the current known as?
- a) resistivity
 - b) charge
 - c) resistance
 - d) time

