

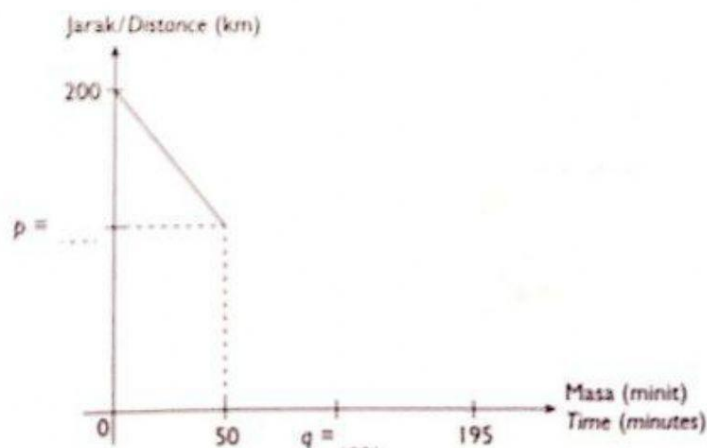
Hari: Tarikh:

4. Encik Tan memandu kereta sejauh 200 km dari Kuala Nerang ke Taiping. Jadual di bawah menunjukkan catatan perjalanannya.

Mr Tan drove 200 km from Kuala Nerang to Taiping. The table shows his travel record.

Waktu Time	Catatan perjalanan Travel record
8.00 a.m.	Memulakan perjalanan Start journey
8.50 a.m.	Berhenti rehat di Gurun setelah berjalan sejauh 70 km Stop to rest at Gurun after travelling 70 km
9.30 a.m.	Meneruskan perjalanan untuk ke Taiping Continue the journey to Taiping
11.15 a.m.	Tiba di Taiping Arrive at Taiping

- (a) Pada graf di bawah,
On the graph below,
- nyatakan nilai p dan nilai q .
state the values of p and q .
 - lengkapkan graf jarak-masa itu bagi
mewakilkkan perjalanan Encik Tan.
complete the distance-time graph to represent
Mr Tan's journey.



- (b) Hitung laju purata, dalam km j^{-1} , bagi keseluruhan perjalanan.
Calculate the average speed, in km h^{-1} , for the whole journey.