

Name: _____

SCIENCE

[70 Marks]

Instructions:

Read each item carefully. Answer all questions.

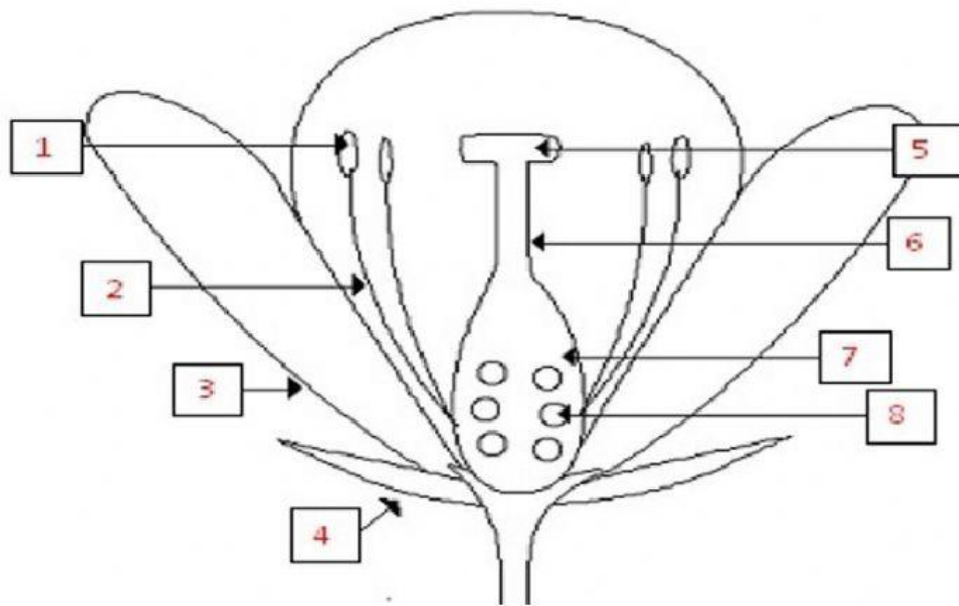


[FLOWERS]

PARTS OF A FLOWER

A. Label the parts of the Hibiscus Flower below. (8 marks)

ovules style petal anther ovary sepal filament stigma



B. Choose the correct word from the list below to correctly complete each sentence.
(5 marks)

anther stigma style ovary filament

1. The **stamen** is the male part of the flower. It consists of the _____
and the _____.

2. The **pistil** is the female part of the flower. It is made up of the _____,
_____ and the _____.

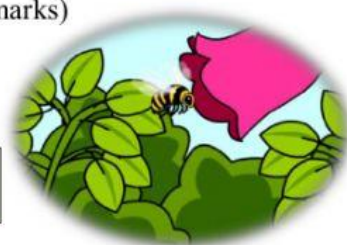
C. Match the following floral part to its function. (6 marks)

FLORAL PART	FUNCTION
1. Petal	a. Produces the pollen.
2. Sepal	b. Holds the flower's major organs.
3. Ovules	c. Attracts insects to the flower.
4. Receptacle	d. The flower's eggs.
5. Anther	e. Produces the ovules.
6. Pistil	f. Encloses and protects the flower when it is in the bud-forming stage.

[POLLINATION]

A. Use the words in the box below to fill in the blanks. (5 marks)

pistil species man fragrance pollen grains



Pollination refers to the transfer of _____ from the male part to the female part of the flower. Pollination takes place in flowers of the same _____. Insects are attracted to the flowers' coloured petals, _____ and sweet nectar. While doing so, the pollen sticks to its body. When the insects fly to another flower, the pollen may be rubbed onto the _____. This pollinates the flower. Not only insects are responsible for aiding in pollination. Other agents of pollination are _____ and the wind.

B. Use the numbers 1-6 to show the Process of Pollination. (6 marks)

- _____ The pollen meets the ovules in the ovary.
- _____ Pollen grains fall onto the stigma.
- _____ Fertilization of eggs occurs when the pollen grains fuse with the egg in the ovule.
- _____ Pollen moves down the style to the ovary.
- _____ Seeds develop inside the fruit.
- _____ After fertilization, a flower begins to die and a fruit starts to grow.

[LIGHT AND SHADOWS]

A. Complete each statement using the words given in the list below. (4 marks)

straight life block source



Light is a form of useful energy that supports _____. An object that gives off light is called a light _____. Light travels from a source and in _____ lines. Shadows are formed when objects _____ out light.

B. Fill in the blanks using the words given below. (3 marks)

transparent opaque translucent

1. Materials that allow some light to pass through them are called _____.
2. Materials that allow light to pass through them are called _____.
3. Materials that allow no light to pass through them are called _____.

C. Select a word from each box to complete the statements below. (5 marks)

4. _____ is an example of transparent material.
5. _____ is an example of translucent material.
6. _____ is an example of opaque material.
7. A natural source of light is _____.
8. An artificial source of light _____.

[SOUNDS]



A. Select **TRUE** or **FALSE**. (4 marks)

1. Sound is produced when an object vibrates. _____
2. Sound only travels through solid mediums. _____
3. The loudness of sound is measured in decibels (dB). _____
4. The most ineffective way to control noise is at its source. _____

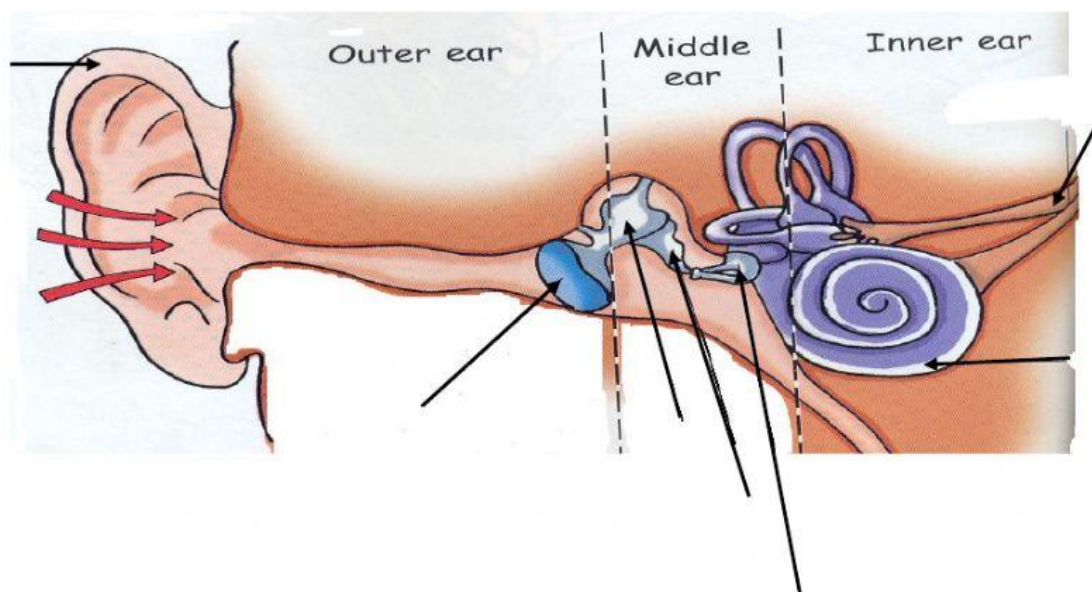
B. Fill in the blanks. (2 marks)

5. An example of a Pleasant Sound is _____.
6. An example of an Unpleasant Sound is _____.

[THE EAR]

A. Label the diagram of the human ear below. (7 marks)

eardrum pinna anvil auditory nerve hammer stirrup cochlea



B. Use the words in the list below to complete each sentence. (8 marks)

funnel solid eardrum gas coiled tube liquid vibrations ear canal

1. Sound waves are really _____ in the air.
2. The pinna is looks like a _____.
3. The cochlea looks like a _____.
4. Sound waves travels from the pinna, through the _____ to the _____.
5. Sounds must travel through a medium before it can reach your ears. A medium can take the form of a _____, _____ or _____.

C. List two ways to protect your ears. (2 marks)

- I. _____
- II. _____

[RENEWABLE AND NON-RENEWABLE RESOURCES]

Select the correct answer from each box below. (5 marks)



1. _____ resources can be used repeatedly and replaced naturally within a few years or decades at about the same rate they are being used.
2. _____ are examples of renewable resources.
3. _____ are examples of non-renewable resources.
4. Which one of the following is **NOT** a benefit of renewable resources?

5. Which one of the following is **NOT** a disadvantage of non-renewable resources?

END OF TEST