

SCIENCE

STANDARD THREE

NAME:


READ THE FOLLOWING DIRECTIONS CAREFULLY

1. This test is divided into six sections.
2. Make sure you read the instructions before you start to work on any section.
3. Type all your answers in the box provided.



Section 1 – Multiple Choices

Answer all questions in this section. Read each question carefully and circle the correct answer. (1 mark each)

1. Which of the following is found at the beginning of a food chain?
 - a. Carnivore
 - b. Omnivore
 - c. Herbivore
 - d. Producer
 2. Plants make their own food thus, they are called:
 - a. Decomposers
 - b. Producers
 - c. Consumers
 - d. Herbivore
 3. Which of the following is an example of a food chain?
 - a. Grass → worm → duck → man
 - b. Fish → plant → man → duck
 - c. Plant → duck → fish → man
 - d. Fish → duck → man → plant
 4. The pupa matures into an adult butterfly. This process is known as:
 - a. Moulting
 - b. Reproduction
 - c. Metamorphosis
 - d. Maturing
 5. The Scarlet Ibis shown below will most likely be found in a:
 - a. Beach
 - b. Wetland
 - c. Savannah
 - d. Rainforest
- 
6. Kevin did not go to work today because he had a fever. Which of the following could be Kevin's body temperature?
 - a. 0 °C
 - b. 40 °C
 - c. 10 °C
 - d. 37 °C

7. What happens to the liquid in a thermometer when it is placed in something hot?
- It expands
 - It freezes
 - It contracts
 - It evaporates
8. Temperature is measured in _____.
- Centimetres
 - Litres
 - Degrees Celsius
 - Kilograms
9. Which of the following liquids is most likely to be found in a thermometer?
- Food Colouring
 - Mercury
 - Acid
 - Oil
10. Which of the following do NOT produce flowers?
- Ochro plant
 - Avocado plant
 - Mango plant
 - Fern plant
11. The female part of the flower is called the _____.
- Stamen
 - Pistil
 - Sepal
 - Petal
12. What is most suitable method to separate a mixture of salt and water?
- Filtration
 - Hand picking
 - Evaporation
 - Using a magnet
13. Solar energy is energy from the _____.
- Moon
 - Wind
 - Sun
 - Stars

14. Wind, Water and Solar energy are known as:
- a. Renewable sources
 - b. Man-made Resources
 - c. Non-Renewable Sources
 - d. Artificial Sources
15. Wind turbines, solar panels and hydroelectric dams are examples of “renewable” energy because:
- a. They do not work together
 - b. Energy from wind, sun or water does not run out
 - c. You have to “renew” it because it gets old.
 - d. No of the above.

Section 2 – Structured Items

Pollution - 10 marks

16. What is pollution? (2 marks)
17. In your own words give a definition of Land Pollution. (2 marks)

Question 18 and 19 are based on the picture shown below.



18. What type of Pollution is taking place in the picture? Explain what may have caused that pollution. (2 marks)

19. List **TWO** effects of this type of pollution. (2 marks)

20. Name **ONE** type of diseases we can get from drinking polluted water. (1 mark)

21. State **One**-way air pollution can be prevented. (1 mark)

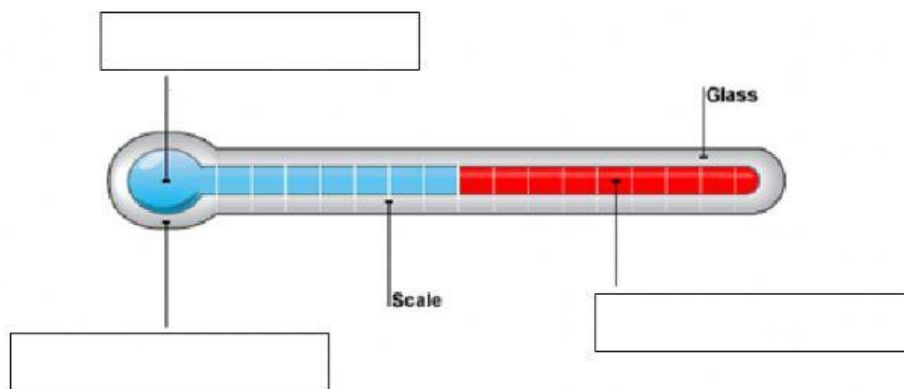
Section 3

Temperature and Thermometer – 6 marks

22. What is a thermometer? (1 mark)

23. Name two types of thermometers. (2 marks)

24. Label the parts of the thermometer below.



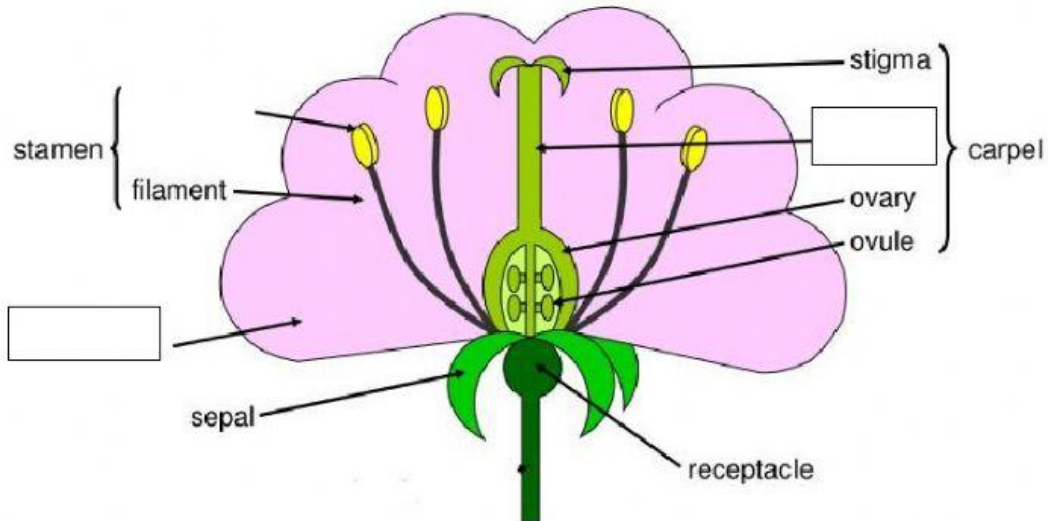
(3 marks)

Section 4

The Flower – 6 marks

25. Using the words from the box below, label the parts of the flower. (4 mark)

| | | | | |
|--------|-------|--------|-------|--------|
| pistil | style | anther | petal | ovules |
|--------|-------|--------|-------|--------|



26. What is the function of the stigma? (1 mark)

27. What makes the pollen in the flower? (1 mark)

Section 5

The Life Cycle of a Butterfly – 4 marks

28. Use arrows to show Life Cycle of a Butterfly in the box below. (2 marks)

29. What do the eggs hatch into? (1 mark)

30. What is the third stage of the butterfly? (1 mark)

Section 6

Renewable and Non-Renewable Energy – 9 marks

31. What will happen to all the living things on Earth if the Sun no longer exists? (1 mark)

32. Classify the following sources of energy in the table below. (8 marks)

| | | | |
|------|-----------|----------|-------------|
| coal | crude oil | tides | the sun |
| wind | rivers | kerosene | natural gas |

| Renewable Sources | Non-Renewable Sources |
|-------------------|-----------------------|
| | |

END OF TEST