

Quizzory on electricity chapter

1. Battery is a combination of two or more
 - a) resistors connected in series
 - b) cells connected in series
 - c) resistors connected in parallel
 - d) cells connected in parallel

2. The resistance of all pure metals _____ on raising the temperature
 - a) remains same
 - b) increases
 - c) decreases
 - d) none of the above

3. Nichrome, manganin are
 - a) resistors
 - b) insulators
 - c) conductors
 - d) superconductors

4. An electric component which can make electrons move and electric current flow is
 - a) resistor
 - b) switch
 - c) cell or battery
 - d) bulb

5. When a cell or battery is connected across a metal wire, the electrons in it flow towards
 - a) positive to negative
 - b) negative to negative
 - c) positive to positive
 - d) negative to positive

6. Electric wires are made of copper or aluminium because they have
 - a) high electrical resistance

- b) infinitely high electrical resistance
- c) low electrical resistance
- d) none of the above

7. The substances which produce a lot of heat on passing current are

- a) insulators
- b) resistors
- c) conductors
- d) semiconductors

8. The combined resistance of any number of resistances connected in series is _____ the individual resistances.

- a) greater than
- b) lesser than
- c) equal to the sum of
- d) both a) and c) are correct

9. The coils of electric iron and electric toasters are made of an alloy rather than a pure metal because

- a) the resistivity of an alloy is much higher than that of pure metal
- b) an alloy does not undergo oxidation (burn) easily even at high temperature
- c) both 1 and 2 are correct
- d) both 1 and 2 are incorrect

10. When a number of resistances are connected in parallel then their combined resistance is _____ the smallest individual resistance.

- a) greater than
- b) lesser than
- c) equal to
- d) none of the above

11. The symbol of a single cell consists of

- a) a straight line

- b) two parallel vertical lines
- c) two parallel horizontal lines
- d) two curved lines

12. Identify this symbol



- a) switch
- b) resistor
- c) bulb
- d) cell

13. Potential difference / current = constant What is that constant called?

- a) resistivity
- b) charge
- c) time
- d) resistance

14. In the following circuit, which of the following electrical components are connected in series

- 1. battery and Ammeter
- 2. Three resistors
- 3. Switch, battery and ammeter
- 4. Voltmeter and the resistors

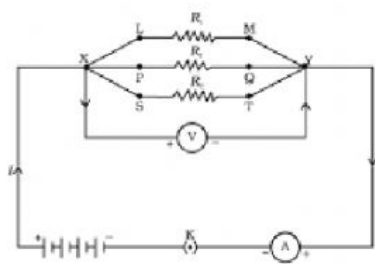


Figure 3

- a) 1,2,3,and4
- b) 2 and 3
- c) 1 and 3
- d) 1,2, and 3

15. when two (or more) resistances are connected end to end consecutively, they are said to be connected in

- a) Series
- b) parallel
- c) neither series nor parallel
- d) both series and parallel

16. If five resistances, each of value 0.2ohm, are connected in series, what will be the resultant resistance?

- a) 0.002 ohm
- b) 0.5 ohm
- c) 1 ohm
- d) 10 ohm

17. when two (or more) resistances are connected between the same two points, they are said to be connected in

- a) series
- b) parallel
- c) neither series nor parallel
- d) both series and parallel

18. Rubber is an excellent

- a) conductor
- b) insulator
- c) resistor
- d) none of the above

19. The property of a conductor due to which it opposes the flow of current through it is called

- a) potential difference
- b) resistance
- c) resistivity
- d) voltage

20. If the resistance of a conductor is doubled the current

- a) gets double
- b) gets halved
- c) gets triple
- d) remains same